



FINISHED CEILING  
 FINISHED CEILING HEIGHT VARIES FROM ±8.5 TO ±11.0  
 TOP OF UNFINISHED FLOOR  
 F.F. = ±98.60  
 FINISHED CEILING HEIGHT VARIES FROM ±8.5 TO ±11.0  
 TOP OF SLAB  
 F.F. = ±85.50



FINISHED CEILING  
 FINISHED CEILING HEIGHT VARIES FROM ±8.5 TO ±11.0  
 TOP OF UNFINISHED FLOOR  
 F.F. = ±98.60  
 FINISHED CEILING HEIGHT VARIES FROM ±8.5 TO ±11.0  
 TOP OF SLAB  
 F.F. = ±85.50



**SURVEYORS CERTIFICATE**

I HEREBY CERTIFY THAT TO THE BEST OF MY KNOWLEDGE OR BELIEF, THIS PLAT IS ACCURATE AND COMPLIES WITH THE PROVISIONS OF SECTION 55-79.58 (B) OF THE CODE OF VIRGINIA 1950 AS AMENDED AND THAT ALL UNITS DEPICTED HEREON HAVE BEEN SUBSTANTIALLY COMPLETED.

*Charles A. Calhoun*  
 STATE CERTIFIED LAND SURVEYOR

12-19-2011  
 DATE

**NOTE:**

**A. Unit Boundaries.** A Unit consists of a portion of the Condominium designed and intended for individual ownership and use. The boundary of the individual units are as set out in the Declaration of Condominium recorded as Instrument No. 10028271 in the Circuit Court of the County of James City.

**B. Air Conditioning/Heating/Mechanical.** The air conditioning, refrigerating, ventilation and heating equipment and water, sewer utility and electrical lines within the Unit, and the air conditioning, refrigerating, ventilation and heating equipment, water, sewer, utility and electrical lines, and other apparatus in connection therewith, which serve one Unit, wherever located, shall be owned by the Unit Owner as part of the Unit and are not part of Common Elements.

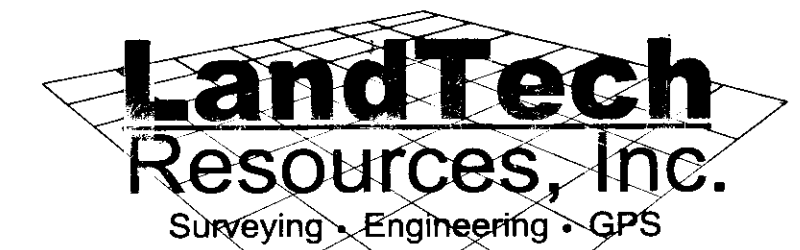
**C.** The horizontal plane of the exterior surface of the ceiling of a Unit, and all materials constituting all or any part of the ceiling shall be considered a part of the Unit.

3 Large/Small Plat(s) Recorded  
 herewith as # 120000845

City of Williamsburg & County of James City  
 Circuit Court: This PLAT was recorded on  
 1-17-2012  
 at 9:33 AM/PM, PB = PG =  
 Document # 120000845  
 BETSY B. WOOLRIDGE, CLERK  
*Betsy Woolridge*, Dep. Clerk

PLANS OF 430 McLAWS  
**McLAWS PROFESSIONAL CENTER, A CONDOMINIUM**  
 ROBERTS DISTRICT, JAMES CITY COUNTY, VIRGINIA

DATE: 12-19-2011 SCALE: 1" = 10' JOB# 07-340  
 SHEET 2 OF 2



205-E-Bulifante Blvd., Williamsburg, VA 23188  
 Phone: (757) 565-1677 Fax: (757) 565-0782  
 web: landtechresources.com