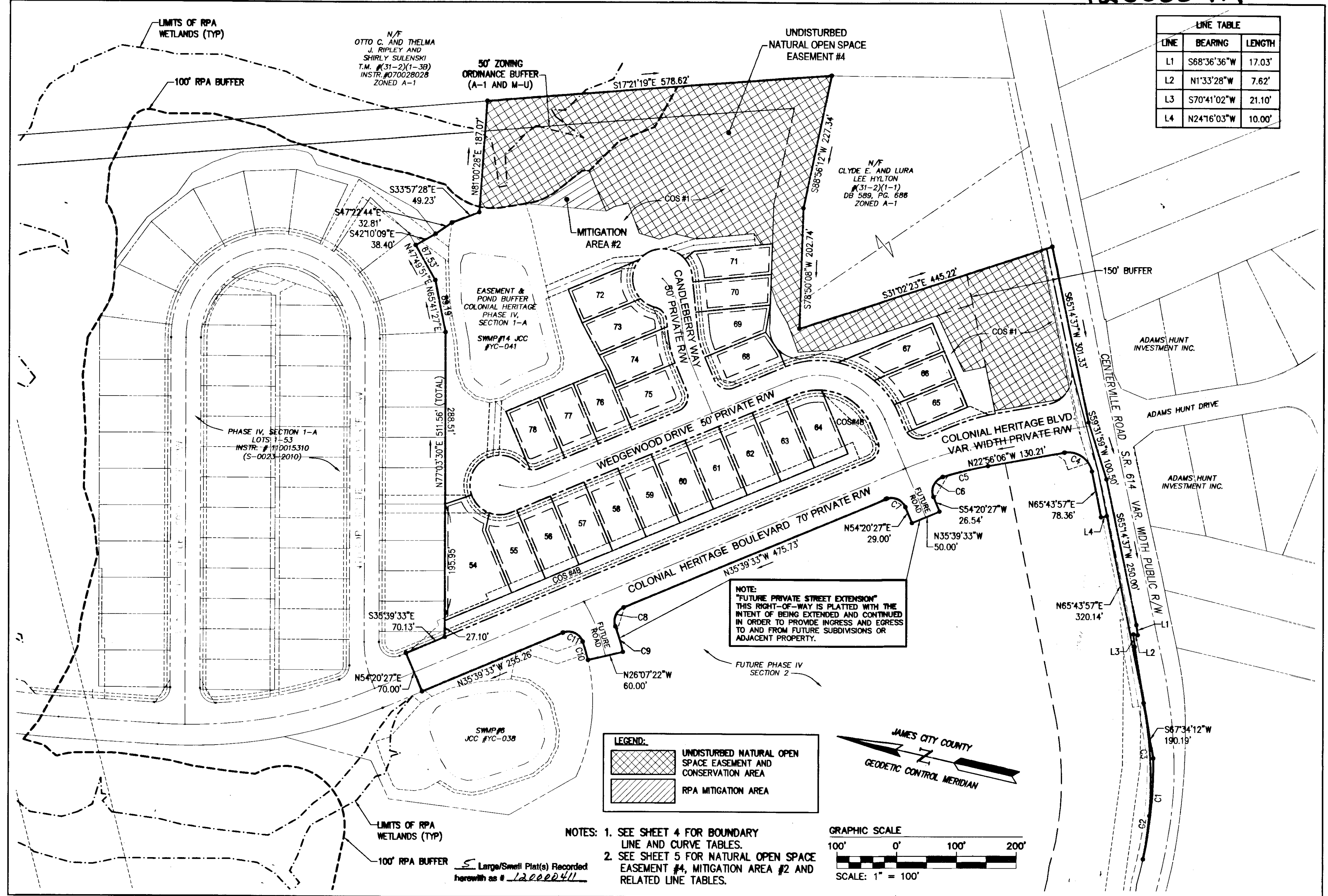


12000411

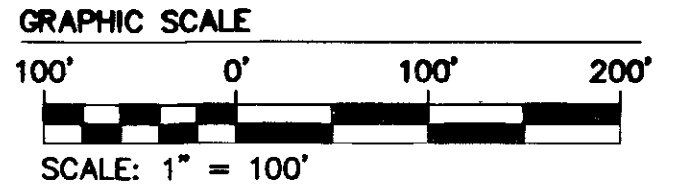
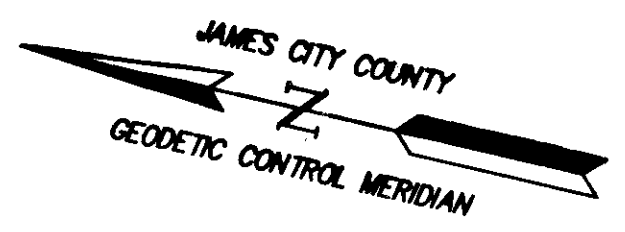


LINE TABLE		
LINE	BEARING	LENGTH
L1	S68°36'36"W	17.03'
L2	N1°33'28"W	7.62'
L3	S70°41'02"W	21.10'
L4	N24°16'03"W	10.00'

NOTE:  
"FUTURE PRIVATE STREET EXTENSION"  
THIS RIGHT-OF-WAY IS PLATTED WITH THE  
INTENT OF BEING EXTENDED AND CONTINUED  
IN ORDER TO PROVIDE INGRESS AND EGRESS  
TO AND FROM FUTURE SUBDIVISIONS OR  
ADJACENT PROPERTY.

**LEGEND:**

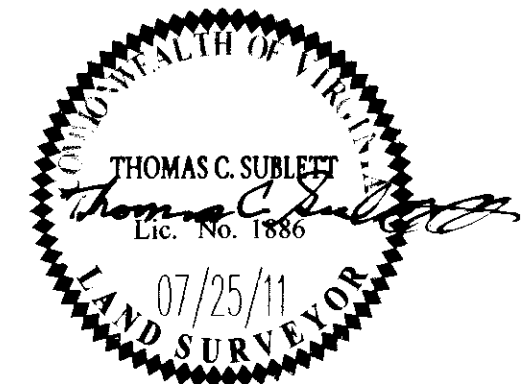
- UNDISTURBED NATURAL OPEN SPACE EASEMENT AND CONSERVATION AREA
- RPA MITIGATION AREA



- NOTES:**
- SEE SHEET 4 FOR BOUNDARY LINE AND CURVE TABLES.
  - SEE SHEET 5 FOR NATURAL OPEN SPACE EASEMENT #4, MITIGATION AREA #2 AND RELATED LINE TABLES.

Large/Small Plat(s) Recorded herewith as # 12000411

City of Williamsburg & County of James City Circuit Court: This PLAT was recorded on		
at 4:57 AM/PM, PG PG		
Document # 12000411		
BETSY B. WOOLRIDGE, CLERK		
Dep. Clerk		
1	9/20/2011	JFS
Rev.	Date	Revised By



**AES**  
CONSULTING ENGINEERS

5248 Olde Towne Road, Suite 1  
Williamsburg, Virginia 23188  
Phone: (757) 253-0040  
Fax: (757) 220-8994  
www.aesva.com

Hampton Roads | Central Virginia | Middle Peninsula

**PLAT OF SUBDIVISION  
COLONIAL HERITAGE  
PHASE IV, SECTION 1-B  
LOTS 54-78  
PREPARED FOR COLONIAL HERITAGE LLC**

STONEHOUSE DISTRICT | JAMES CITY COUNTY | VIRGINIA

Project Contacts:	TCS
Project Number:	8861-40-1B
Scale:	1"=100'
Date:	07/25/11
Sheet Number:	2 of 5