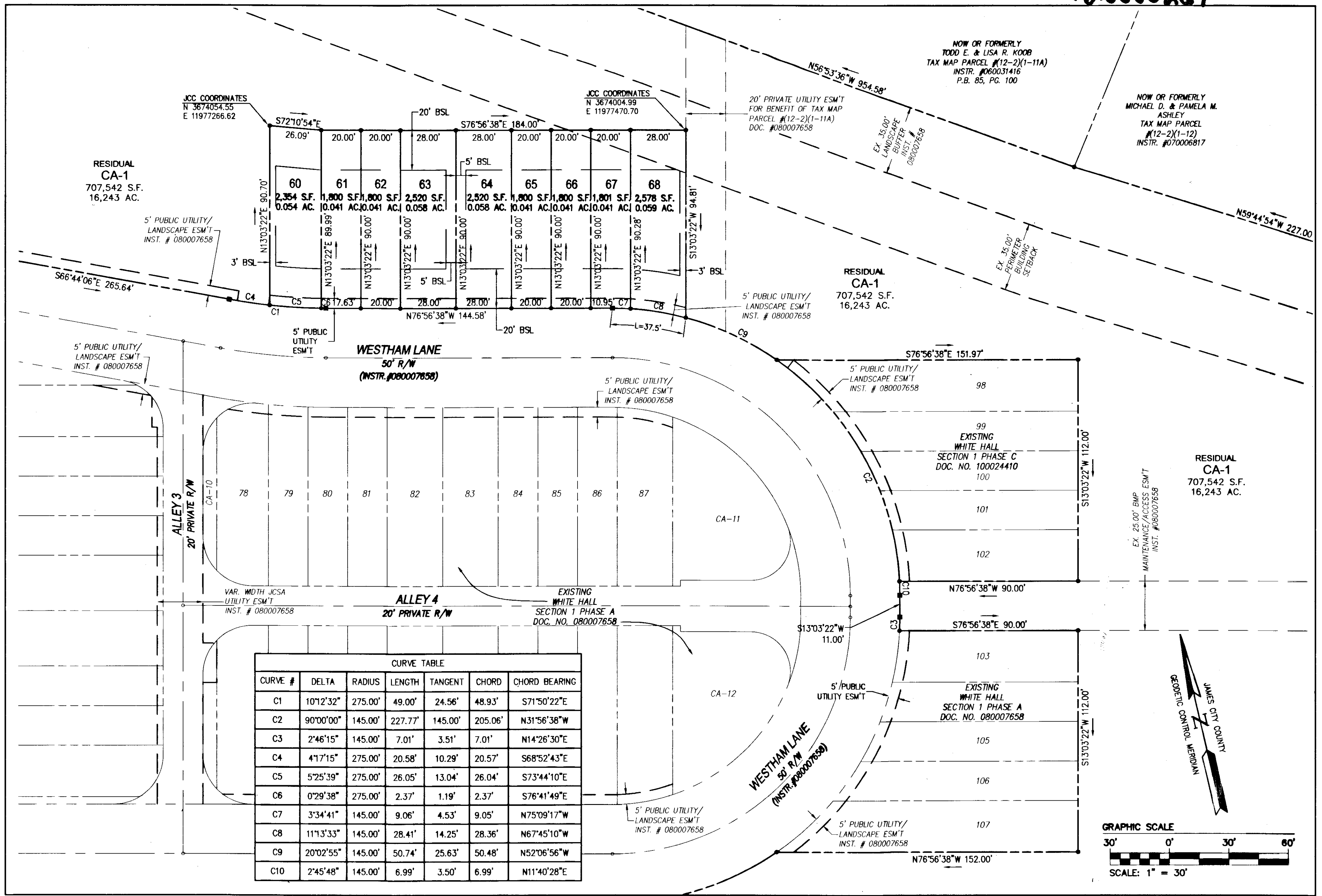
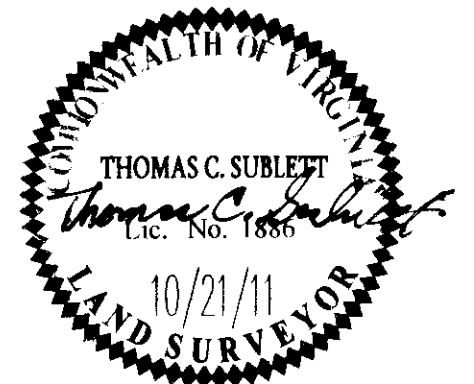


120000267



City of Williamsburg & County of James City
Circuit Court: This PLAT was recorded on
at 12:23 AM/PM, PG 1 PG 1
Document # 120000267
BETSY B. WOOLRIDGE, CLERK
Dep. Clerk

1	12/5/11	REVISED PER COUNTY COMMENTS	ABS
Rev.	Date	Description	Revised By



2 Large/Small Plat(s) Recorded
herewith as # 120000267

AES
CONSULTING ENGINEERS
Hampton Roads | Central Virginia | Middle Peninsula

5248 Olde Towne Road, Suite 1
Williamsburg, Virginia 23188
Phone: (757) 253-0040
Fax: (757) 220-8994
www.aesva.com

PLAT OF SUBDIVISION OF PARCEL CA-1
WHITE HALL
SECTION 1, PHASE D
LOTS 60-68
DEVELOPER: HHHUNT COMMUNITIES

STONEHOUSE DISTRICT | JAMES CITY COUNTY | VIRGINIA

Project Contacts: RMS
Project Number: 9048-10
Scale: 1"=30'
Date: 10/21/11
Sheet Number
2 OF 2