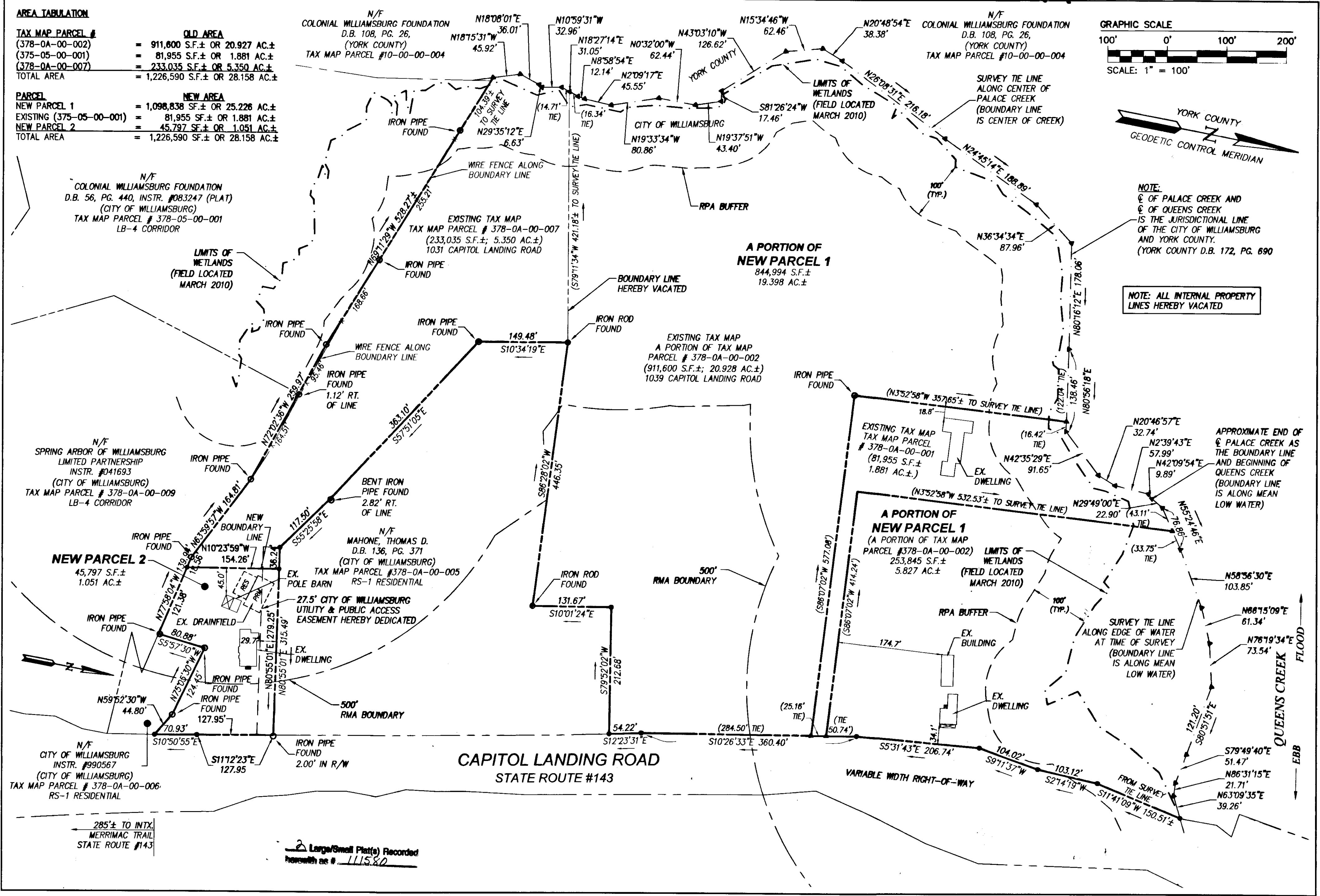


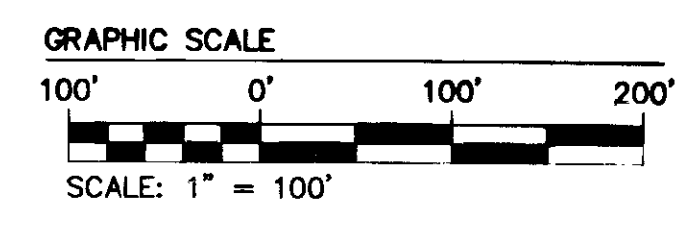
111580



AREA TABULATION

TAX MAP PARCEL #	OLD AREA
(378-0A-00-002)	= 911,600 S.F.± OR 20.927 AC.±
(378-05-00-001)	= 81,955 S.F.± OR 1.881 AC.±
(378-0A-00-007)	= 233,035 S.F.± OR 5.350 AC.±
TOTAL AREA	= 1,226,590 S.F.± OR 28.158 AC.±

PARCEL	NEW AREA
NEW PARCEL 1	= 1,098,838 S.F.± OR 25.226 AC.±
EXISTING (378-05-00-001)	= 81,955 S.F.± OR 1.881 AC.±
NEW PARCEL 2	= 45,797 S.F.± OR 1.051 AC.±
TOTAL AREA	= 1,226,590 S.F.± OR 28.158 AC.±

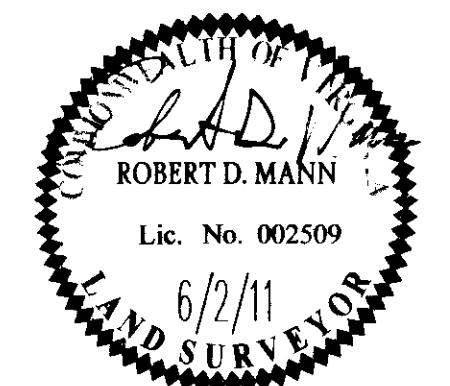


NOTE:
 ☉ OF PALACE CREEK AND
 ☉ OF QUEENS CREEK
 IS THE JURISDICTIONAL LINE
 OF THE CITY OF WILLIAMSBURG
 AND YORK COUNTY.
 (YORK COUNTY D.B. 172, PG. 690)

**NOTE: ALL INTERNAL PROPERTY
 LINES HEREBY VACATED**

APPROXIMATE END OF
 ☉ PALACE CREEK AS
 THE BOUNDARY LINE
 AND BEGINNING OF
 QUEENS CREEK
 (BOUNDARY LINE
 IS ALONG MEAN
 LOW WATER)

City of Williamsburg & County of James City	
Circuit Court: This PLAT was recorded on	7 October 2011
at 10:52 AM/RM, PB PG	
DOCUMENT #	111580
BETSY B. WOOLRIDGE, CLERK	
<i>Betsy B. Woolridge</i> Clerk	
Rev. Date	Revised by



NES
 CONSULTING ENGINEERS
 5248 Olde Towne Road, Suite 1
 Williamsburg, Virginia 23188
 Phone: (757) 253-0040
 Fax: (757) 220-8994
 www.nesva.com

**PLAT FOR BOUNDARY LINE ADJUSTMENT
 AND PROPERTY LINE VACATION**
**MAHONE FAMILY
 LIMITED PARTNERSHIP, LLP**
 STRYKER DISTRICT CITY OF WILLIAMSBURG VIRGINIA

Project Contacts:	TCS, JAG
Project Number:	9665-01
Scale:	1"=100'
Date:	3/24/11
Sheet Number	2 OF 2