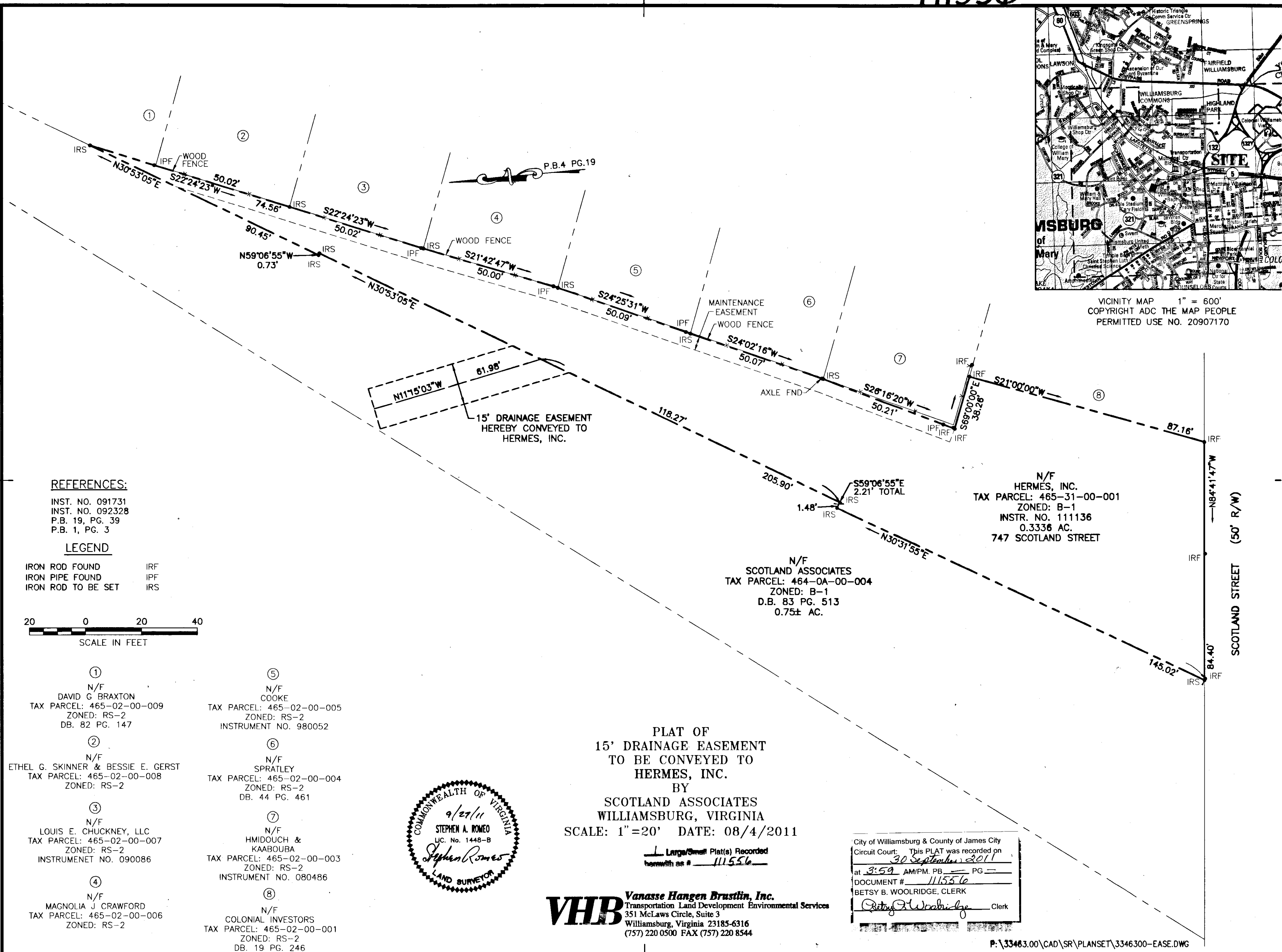


VICINITY MAP 1" = 600'
COPYRIGHT ADC THE MAP PEOPLE
PERMITTED USE NO. 20907170

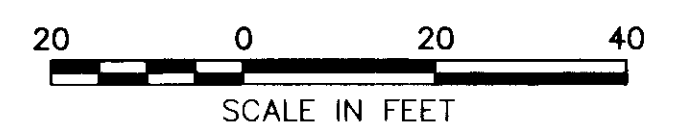


REFERENCES:

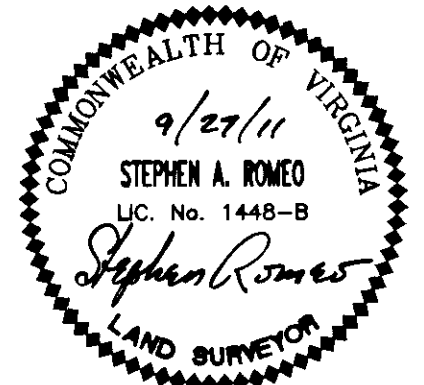
INST. NO. 091731
INST. NO. 092328
P.B. 19, PG. 39
P.B. 1, PG. 3

LEGEND

IRON ROD FOUND IRF
IRON PIPE FOUND IPF
IRON ROD TO BE SET IRS



- ① N/F
DAVID G. BRAXTON
TAX PARCEL: 465-02-00-009
ZONED: RS-2
DB. 82 PG. 147
- ② N/F
ETHEL G. SKINNER & BESSIE E. GERST
TAX PARCEL: 465-02-00-008
ZONED: RS-2
- ③ N/F
LOUIS E. CHUCKNEY, LLC
TAX PARCEL: 465-02-00-007
ZONED: RS-2
INSTRUMENT NO. 090086
- ④ N/F
MAGNOLIA J. CRAWFORD
TAX PARCEL: 465-02-00-006
ZONED: RS-2
- ⑤ N/F
COOKE
TAX PARCEL: 465-02-00-005
ZONED: RS-2
INSTRUMENT NO. 980052
- ⑥ N/F
SPRATLEY
TAX PARCEL: 465-02-00-004
ZONED: RS-2
DB. 44 PG. 461
- ⑦ N/F
HMIDOUCH & KAABOUBA
TAX PARCEL: 465-02-00-003
ZONED: RS-2
INSTRUMENT NO. 080486
- ⑧ N/F
COLONIAL INVESTORS
TAX PARCEL: 465-02-00-001
ZONED: RS-2
DB. 19 PG. 246



PLAT OF
15' DRAINAGE EASEMENT
TO BE CONVEYED TO
HERMES, INC.
BY
SCOTLAND ASSOCIATES
WILLIAMSBURG, VIRGINIA
SCALE: 1"=20' DATE: 08/4/2011

VHB Vanasse Hangen Brustlin, Inc.
Transportation Land Development Environmental Services
351 McLaws Circle, Suite 3
Williamsburg, Virginia 23185-6316
(757) 220 0500 FAX (757) 220 8544

City of Williamsburg & County of James City
Circuit Court: This PLAT was recorded on
30 September 2011
at 3:59 AM/PM, PB PG
DOCUMENT # 111556
BETSY B. WOOLRIDGE, CLERK
Betsy B. Woolridge Clerk

N/F
HERMES, INC.
TAX PARCEL: 465-31-00-001
ZONED: B-1
INSTR. NO. 111136
0.3336 AC.
747 SCOTLAND STREET

N/F
SCOTLAND ASSOCIATES
TAX PARCEL: 464-0A-00-004
ZONED: B-1
D.B. 83 PG. 513
0.75± AC.