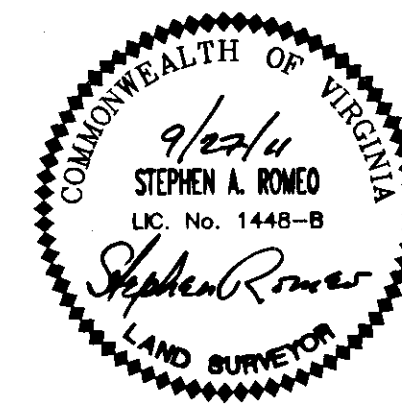
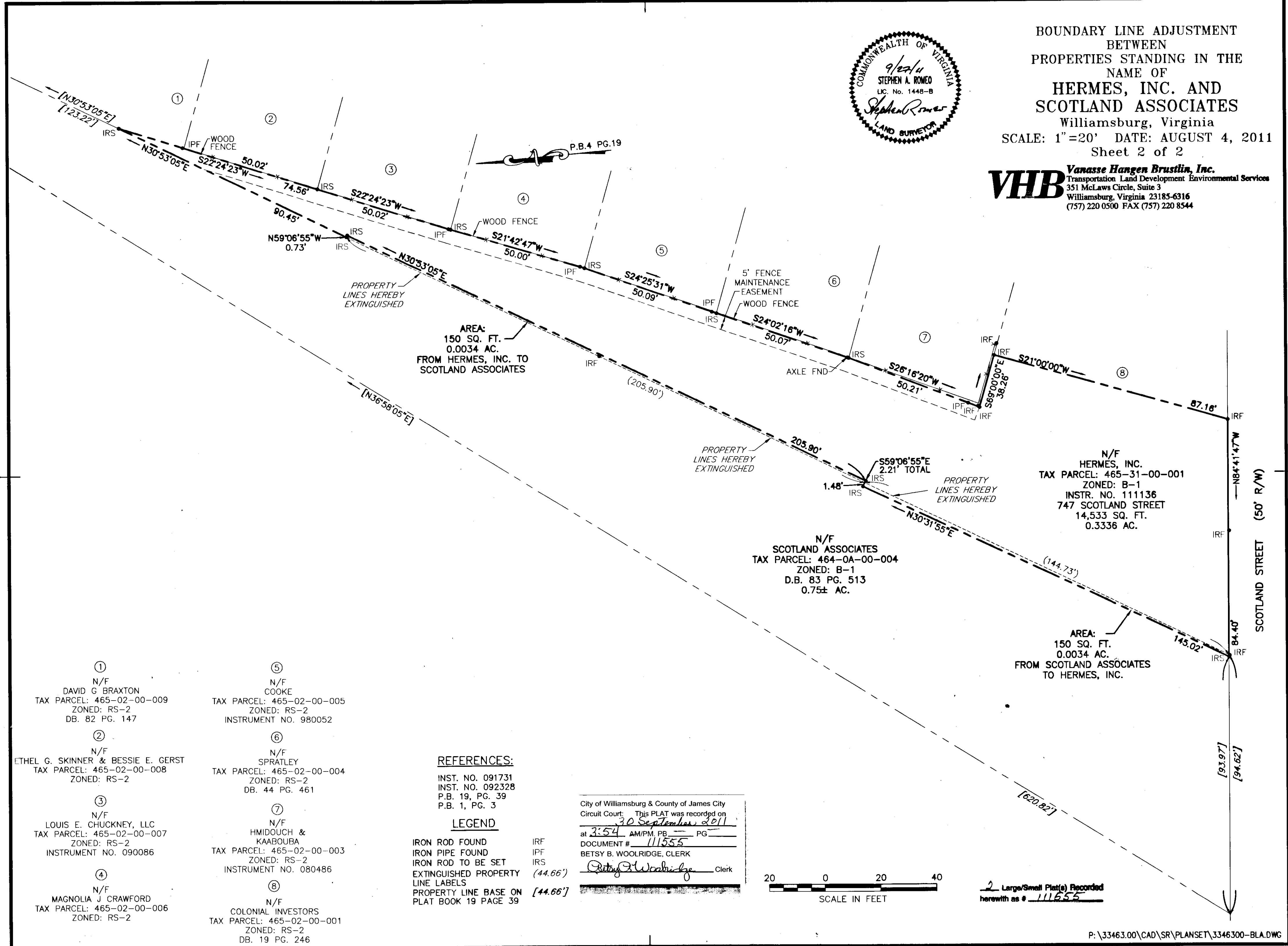


BOUNDARY LINE ADJUSTMENT  
BETWEEN  
PROPERTIES STANDING IN THE  
NAME OF  
**HERMES, INC. AND  
SCOTLAND ASSOCIATES**  
Williamsburg, Virginia  
SCALE: 1"=20' DATE: AUGUST 4, 2011  
Sheet 2 of 2



**VHB** Vanasse Hangen Brustlin, Inc.  
Transportation Land Development Environmental Services  
351 McLaws Circle, Suite 3  
Williamsburg, Virginia 23185-6316  
(757) 220 0500 FAX (757) 220 8544



- ①  
N/F  
DAVID G BRAXTON  
TAX PARCEL: 465-02-00-009  
ZONED: RS-2  
DB. 82 PG. 147
- ②  
N/F  
ETHEL G. SKINNER & BESSIE E. GERST  
TAX PARCEL: 465-02-00-008  
ZONED: RS-2
- ③  
N/F  
LOUIS E. CHUCKNEY, LLC  
TAX PARCEL: 465-02-00-007  
ZONED: RS-2  
INSTRUMENT NO. 090086
- ④  
N/F  
MAGNOLIA J CRAWFORD  
TAX PARCEL: 465-02-00-006  
ZONED: RS-2

- ⑤  
N/F  
COOKE  
TAX PARCEL: 465-02-00-005  
ZONED: RS-2  
INSTRUMENT NO. 980052
- ⑥  
N/F  
SPRATLEY  
TAX PARCEL: 465-02-00-004  
ZONED: RS-2  
DB. 44 PG. 461
- ⑦  
N/F  
HMIDOUCH & KAABOUBA  
TAX PARCEL: 465-02-00-003  
ZONED: RS-2  
INSTRUMENT NO. 080486
- ⑧  
N/F  
COLONIAL INVESTORS  
TAX PARCEL: 465-02-00-001  
ZONED: RS-2  
DB. 19 PG. 246

**REFERENCES:**

INST. NO. 091731  
INST. NO. 092328  
P.B. 19, PG. 39  
P.B. 1, PG. 3

**LEGEND**

IRON ROD FOUND IRF  
IRON PIPE FOUND IPF  
IRON ROD TO BE SET IRS  
EXTINGUISHED PROPERTY LINE LABELS [44.66']  
PROPERTY LINE BASE ON PLAT BOOK 19 PAGE 39 [44.66']

City of Williamsburg & County of James City  
Circuit Court: This PLAT was recorded on  
30 September 2011  
at 3:54 AM/PM, PG.       
DOCUMENT # 111555  
BETSY B. WOOLRIDGE, CLERK  
*Betsy Woolridge* Clerk



2 Large/Small Plat(s) Recorded  
herewith as # 111555