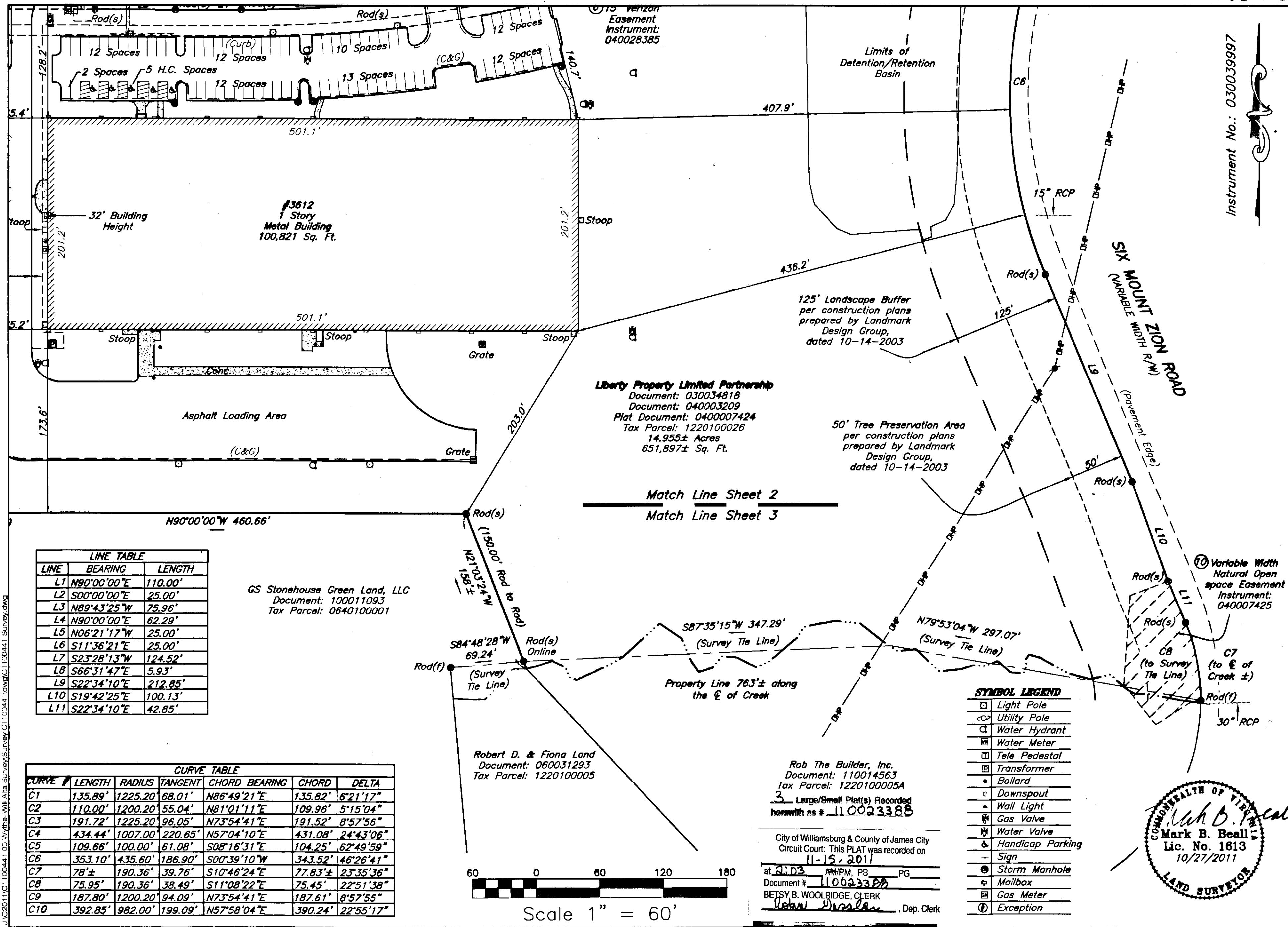


110023388



LINE TABLE

LINE	BEARING	LENGTH
L1	N90°00'00"E	110.00'
L2	S00°00'00"E	25.00'
L3	N89°43'25"W	75.96'
L4	N90°00'00"E	62.29'
L5	N06°21'17"W	25.00'
L6	S11°36'21"E	25.00'
L7	S23°28'13"W	124.52'
L8	S66°31'47"E	5.93'
L9	S22°34'10"E	212.85'
L10	S19°42'25"E	100.13'
L11	S22°34'10"E	42.85'

CURVE TABLE

CURVE #	LENGTH	RADIUS	TANGENT	CHORD BEARING	CHORD	DELTA
C1	135.89'	1225.20'	68.01'	N86°49'21"E	135.82'	6°21'17"
C2	110.00'	1200.20'	55.04'	N81°01'11"E	109.96'	5°15'04"
C3	191.72'	1225.20'	96.05'	N73°54'41"E	191.52'	8°57'56"
C4	434.44'	1007.00'	220.85'	N57°04'10"E	431.08'	24°43'06"
C5	109.66'	100.00'	61.08'	S08°16'31"E	104.25'	62°49'59"
C6	353.10'	435.60'	186.90'	S00°39'10"W	343.52'	46°26'41"
C7	78'±	190.36'	39.76'	S10°46'24"E	77.83'±	23°35'36"
C8	75.95'	190.36'	38.49'	S11°08'22"E	75.45'	22°51'38"
C9	187.80'	1200.20'	94.09'	N73°54'41"E	187.61'	8°57'55"
C10	392.85'	982.00'	199.09'	N57°58'04"E	390.24'	22°55'17"

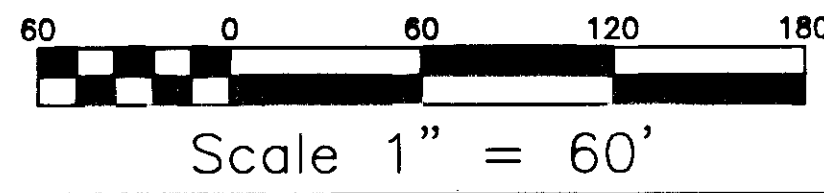
GS Stonehouse Green Land, LLC
Document: 100011093
Tax Parcel: 0640100001

Robert D. & Fiona Land
Document: 060031293
Tax Parcel: 1220100005

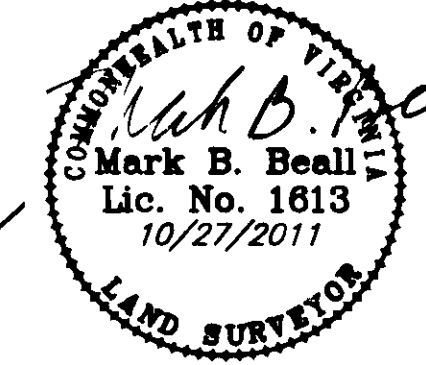
Liberty Property Limited Partnership
Document: 030034818
Document: 040003209
Plat Document: 0400007424
Tax Parcel: 1220100026
14.955± Acres
651,897± Sq. Ft.

Rob The Builder, Inc.
Document: 110014563
Tax Parcel: 1220100005A
3 Large/Small Plat(s) Recorded
herewith as # 110023388

City of Williamsburg & County of James City
Circuit Court: This PLAT was recorded on
11-15-2011
at 2:03 PM, PG
Document # 110023388
BETSY B. WOOLRIDGE, CLERK
Jan Wrasler, Dep. Clerk



- SYMBOL LEGEND**
- Light Pole
 - Utility Pole
 - ⊕ Water Hydrant
 - ⊗ Water Meter
 - ⊞ Tele Pedestal
 - ⊠ Transformer
 - Bollard
 - ⊥ Downspout
 - ⊖ Wall Light
 - ⊕ Gas Valve
 - ⊗ Water Valve
 - ⊞ Handicap Parking
 - ⊠ Sign
 - ⊕ Storm Manhole
 - ⊞ Mailbox
 - ⊗ Gas Meter
 - ⊞ Exception



BALZER AND ASSOCIATES, INC.
www.balzer.com
PLANNERS • ARCHITECTS
ENGINEERS • SURVEYORS
15671 City View Drive
Suite 200
Midlothian, Virginia 23113
Phone: 804/794-0571
FAX: 804/794-2635
1206 Corporate Circle
Roanoke, Virginia 24011
Phone: 540/772-9580
FAX: 540/772-8050
448 Peppers Ferry Road
Christiansburg, Virginia 24073
Phone: 540/981-4290
FAX: 540/981-4291
1561 Commerce Road
Verona, Virginia 24482
Phone: 540/248-3220
FAX: 540/248-3221

ALTA/ACSM LAND TITLE SURVEY OF
TAX PARCEL: 1220100026 AND KNOWN AS
3612 LAGRANGE PARKWAY
STONEHOUSE DISTRICT
JAMES CITY COUNTY, VIRGINIA

DRAWN BY: CMF
DESIGNED BY:
CHECKED BY: MBB
DATE: 10-27-2011
REVISIONS:
SCALE: AS SHOWN
SHEET NO.
3 OF 3
JOB NO.
C1100441.00
DEPT. 55

Instrument No.: 030039997

J:\C20-11C1-00441-00-Write-Virg-Alla-Survey\Survey-C1100441.dwg