

110023388

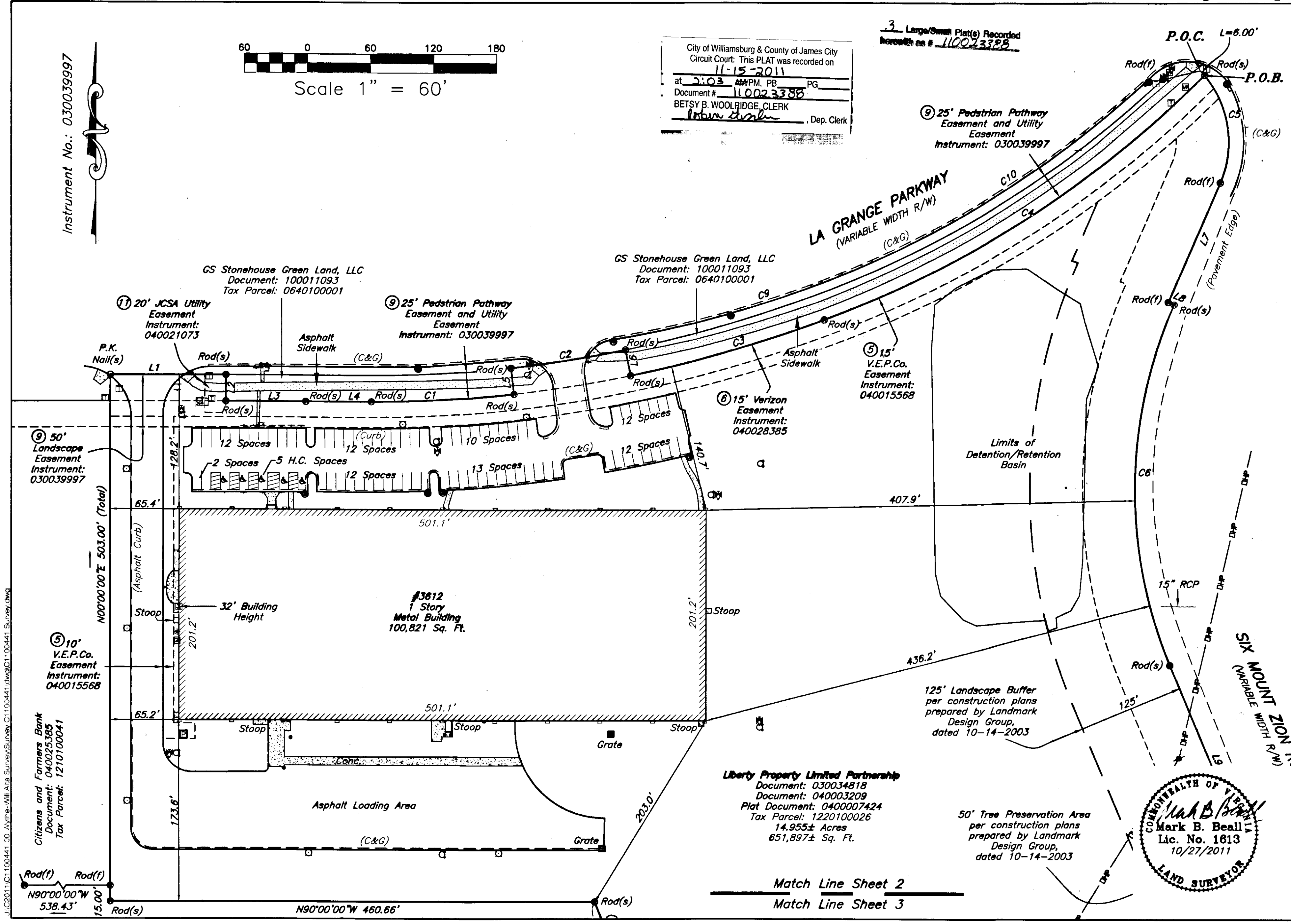
Instrument No.: 030039997



City of Williamsburg & County of James City  
Circuit Court: This PLAT was recorded on  
11-15-2011  
at 2:03 PM, PB PG  
Document # 110023388  
BETSY B. WOOLRIDGE, CLERK  
*Betsy Woolridge*, Dep. Clerk

3 Large/Small Plat(s) Recorded  
herewith as # 110023388

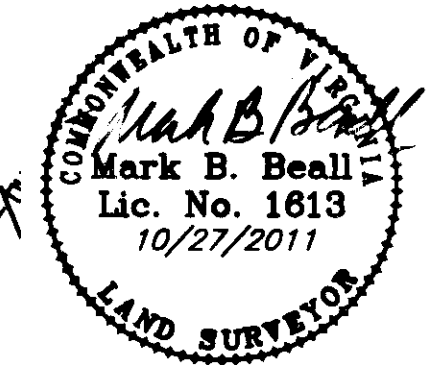
**BALZER**  
AND ASSOCIATES, INC.  
**PLANNERS • ARCHITECTS**  
**ENGINEERS • SURVEYORS**  
www.balzer.com  
15871 City View Drive  
Suite 200  
Midlothian, Virginia 23113  
Phone: 804/794-0571  
FAX: 804/794-2635  
1208 Corporate Circle  
Roanoke, Virginia 24018  
Phone: 540/772-9580  
FAX: 540/772-8050  
448 Peppers Ferry Road  
Christiansburg, Virginia 24073  
Phone: 540/981-4200  
FAX: 540/981-4291  
1561 Commerce Road  
Verona, Virginia 24482  
Phone: 540/248-3220  
FAX: 540/248-3221



**ALTA/ACSM LAND TITLE SURVEY OF**  
**TAX PARCEL: 122010026 AND KNOWN AS**  
**3612 LAGRANGE PARKWAY**  
STONEHOUSE DISTRICT  
JAMES CITY COUNTY, VIRGINIA

DRAWN BY: CMF  
DESIGNED BY:  
CHECKED BY: MBB  
DATE: 10-27-2011  
REVISIONS:

SCALE: AS SHOWN  
SHEET NO.  
**2 OF 3**  
JOB NO.  
C1100441.00  
DEPT. 55



**Liberty Property Limited Partnership**  
Document: 030034818  
Document: 040003209  
Plat Document: 040007424  
Tax Parcel: 1220100026  
14.955± Acres  
651,897± Sq. Ft.

50' Tree Preservation Area  
per construction plans  
prepared by Landmark  
Design Group,  
dated 10-14-2003

125' Landscape Buffer  
per construction plans  
prepared by Landmark  
Design Group,  
dated 10-14-2003

Match Line Sheet 2  
Match Line Sheet 3

J:\C2011\C1100441.00\_Mythe-Mill Alta Survey\Survey\_C1100441.dwg C:\100441\_Survey.dwg