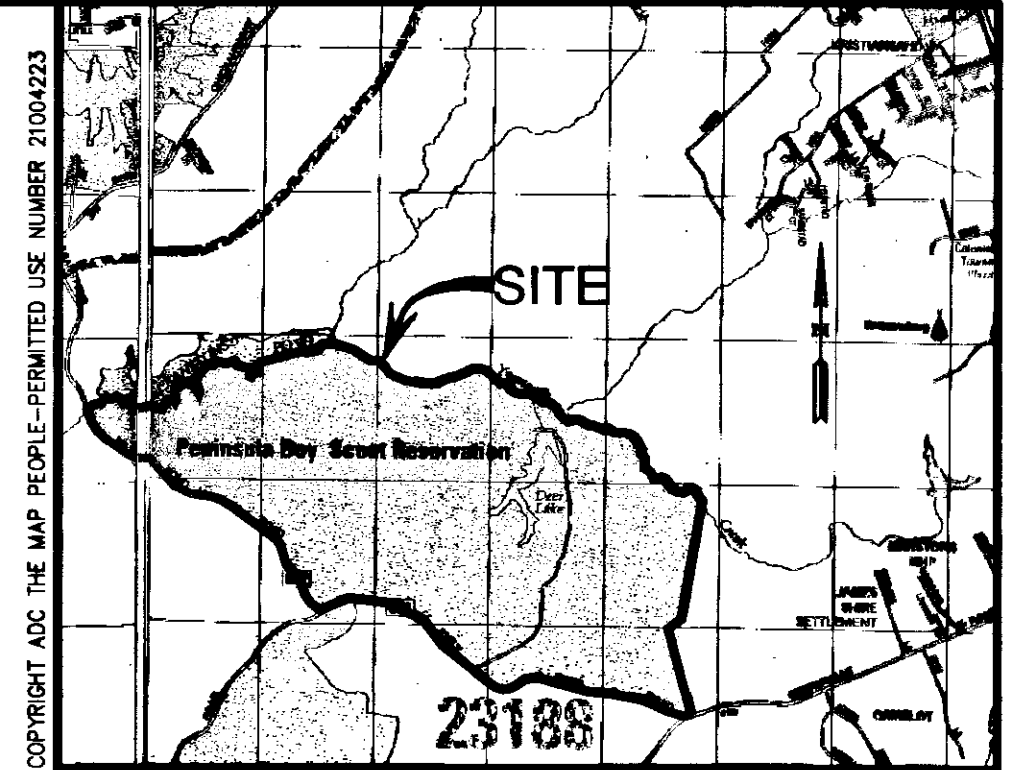
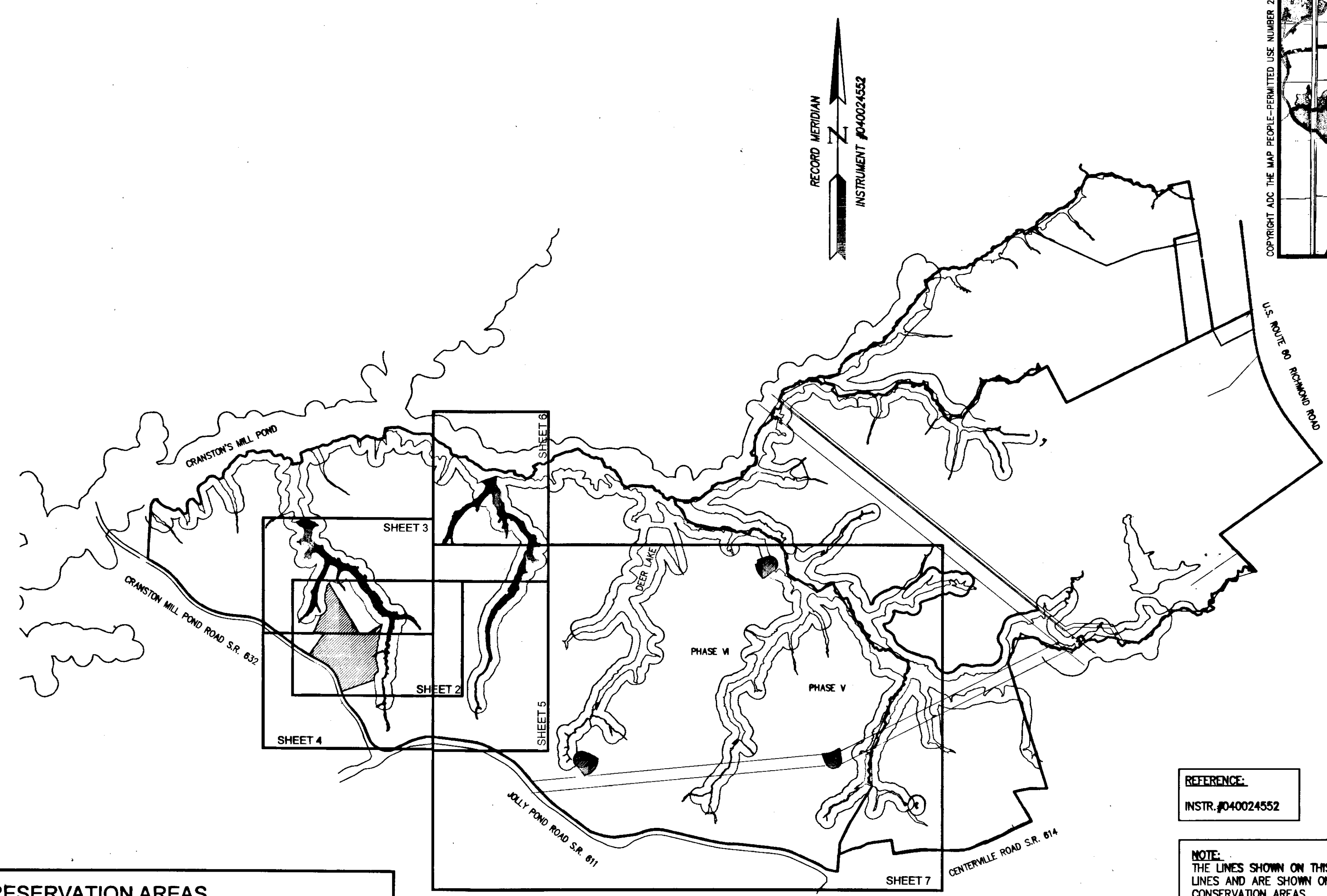


110019144



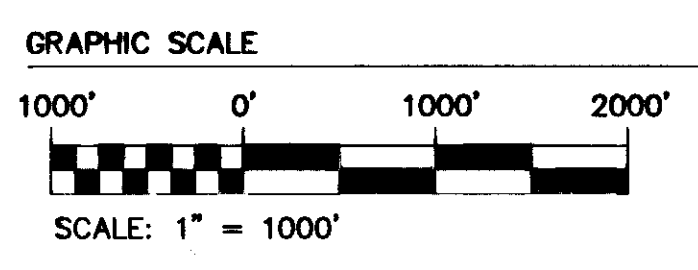
VICINITY MAP
SCALE 1"=3000'



PRESERVATION AREAS

NON-RPA UPLAND BUFFER ADJACENT TO WETLANDS PRESERVATION	14.63 ACRES±
WETLAND PRESERVATION	11.95 ACRES±
ENDANGERED SPECIES CONSERVATION AREA	3.50 ACRES±
STREAM CHANNEL PRESERVATION	5,423 LF

KEY MAP



REFERENCE:
INSTR. #040024552

NOTE:
THE LINES SHOWN ON THIS MAP ARE NOT INTENDED TO BE PROPERTY LINES AND ARE SHOWN ONLY TO DESIGNATE THE PRESERVATION AND CONSERVATION AREAS.

STATE OF VIRGINIA
CITY OF WILLIAMSBURG & COUNTY OF JAMES CITY CIRCUIT COURT. THIS 12 DAY OF Sept 2011
THE MAP SHOWN HEREON WAS PRESENTED AND ADMITTED TO THE RECORD AS THE LAW DIRECTS. ●
2:06 AM/PM
INSTRUMENT # 110019144 10 Large Format Plat(s) Recorded herewith as # 110019144
TESTE: Betsy B. Woolridge, Clerk By: Betsy B. Woolridge, Deputy
BETSY B. WOOLRIDGE, CLERK

Rev	Date	Description	Revised By

AES
CONSULTING ENGINEERS
Hampton Roads | Central Virginia | Middle Peninsula
5248 Old Towne Road, Suite 1
Williamsburg, Virginia 23186
Phone: (757) 253-0040
Fax: (757) 220-8994
www.aesva.com

MAP SHOWING PRESERVATION AREAS
PHASE V AND VI
LOCATED ON THE PROPERTY OWNED BY
COLONIAL HERITAGE LLC
STONEHOUSE DISTRICT COUNTY OF JAMES CITY VIRGINIA

Project Contacts: **HWP/RWE**
Project Number: **8881-11-L**
Scale: **1"=1000'** Date: **02/07/11**
Sheet Number
1 of 10