

110018543

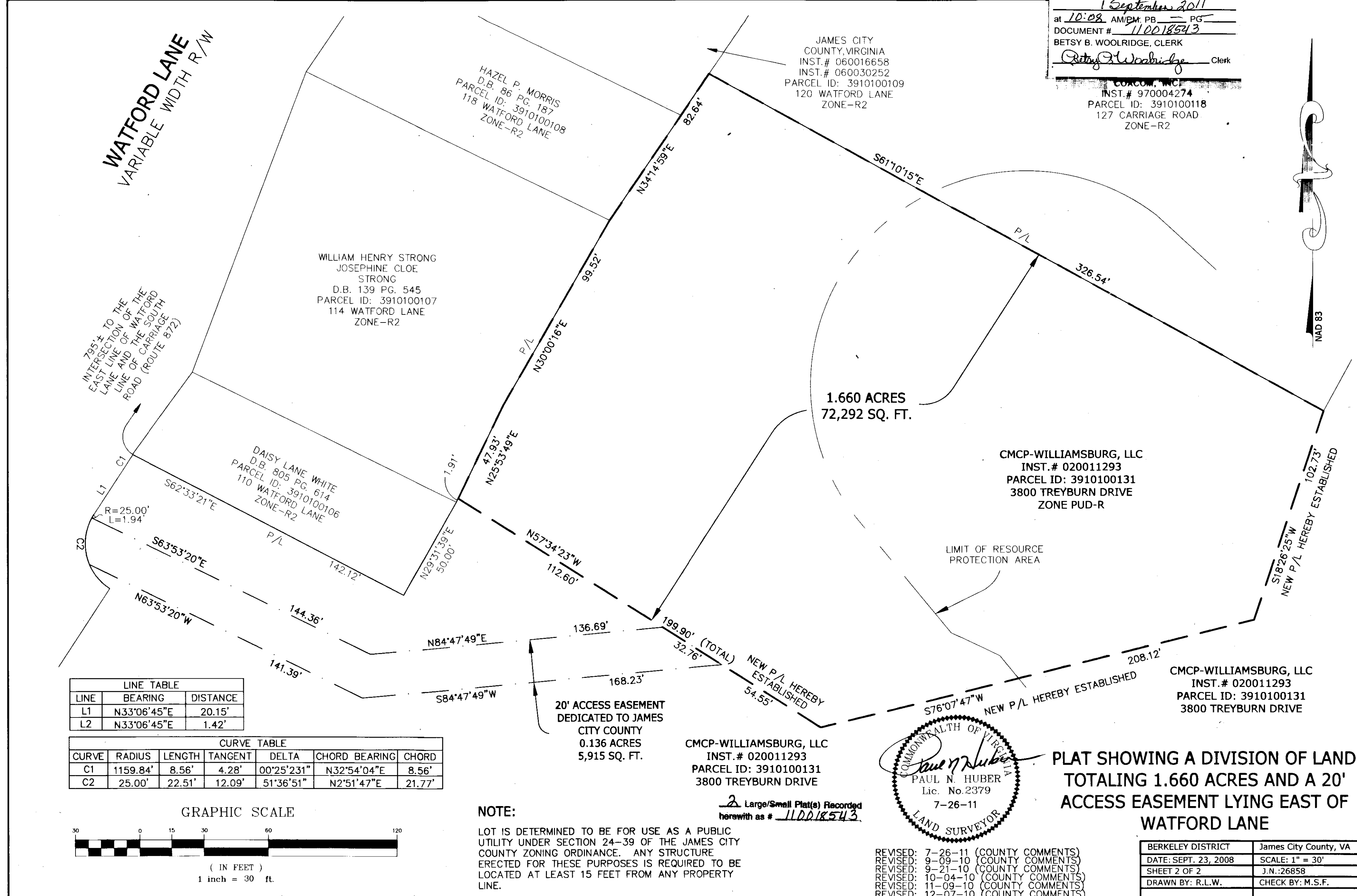
City of Williamsburg & County of James City
 Circuit Court: This PLAT was recorded on
 at 10:08 AM September 2011
 DOCUMENT # 110018543
 Betsy B. Woolridge, CLERK

CONCOM, INC.
 INST. # 970004274
 PARCEL ID: 3910100118
 127 CARRIAGE ROAD
 ZONE-R2

THIS PLAT WAS PREPARED AT THE
 1001 Boulders Parkway, Suite 300 | Richmond, VA 23225
 TEL: 804.200.6500 FAX: 804.560.1016 www.timmons.com

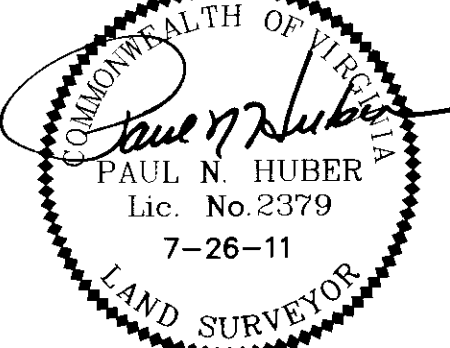
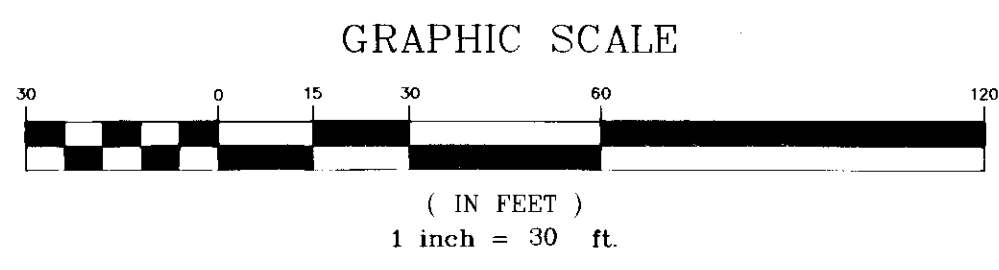
YOUR VISION ACHIEVED THROUGH OURS.

Site Development | Residential | Infrastructure | Technology



LINE TABLE		
LINE	BEARING	DISTANCE
L1	N33°06'45"E	20.15'
L2	N33°06'45"E	1.42'

CURVE TABLE						
CURVE	RADIUS	LENGTH	TANGENT	DELTA	CHORD BEARING	CHORD
C1	1159.84'	8.56'	4.28'	00°25'231"	N32°54'04"E	8.56'
C2	25.00'	22.51'	12.09'	51°36'51"	N2°51'47"E	21.77'



PLAT SHOWING A DIVISION OF LAND
 TOTALING 1.660 ACRES AND A 20'
 ACCESS EASEMENT LYING EAST OF
 WATFORD LANE

REVISD: 7-26-11 (COUNTY COMMENTS)
 REVISD: 9-09-10 (COUNTY COMMENTS)
 REVISD: 9-21-10 (COUNTY COMMENTS)
 REVISD: 10-04-10 (COUNTY COMMENTS)
 REVISD: 11-09-10 (COUNTY COMMENTS)
 REVISD: 12-07-10 (COUNTY COMMENTS)

BERKELEY DISTRICT	James City County, VA
DATE: SEPT. 23, 2008	SCALE: 1" = 30'
SHEET 2 OF 2	J.N.:26858
DRAWN BY: R.L.W.	CHECK BY: M.S.F.