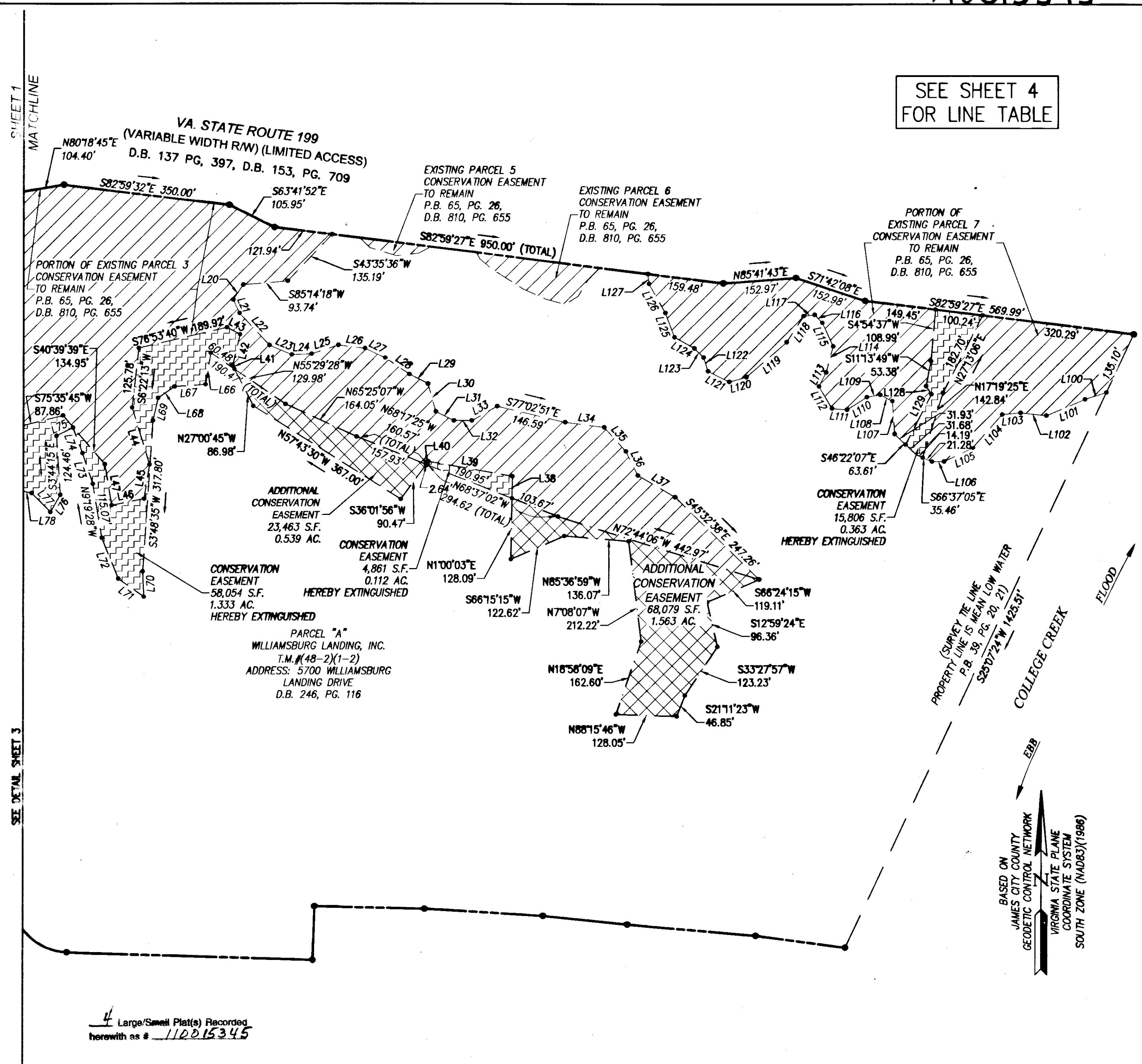
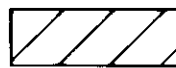




SEE SHEET 4
FOR LINE TABLE

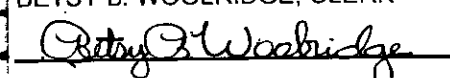


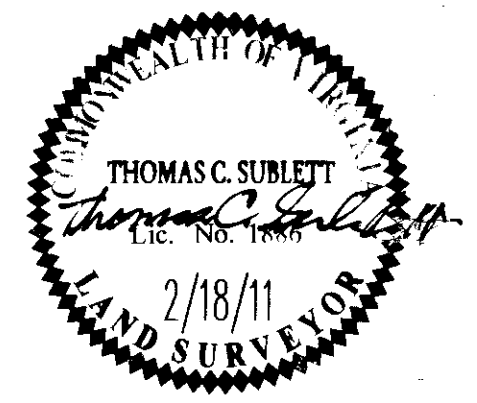
-  EXISTING CONSERVATION EASEMENT TO REMAIN.
-  CONSERVATION EASEMENT HEREBY EXTINGUISHED.
-  ADDITIONAL CONSERVATION EASEMENT HEREBY CONVEYED TO JAMES CITY COUNTY.

4 Large/Small Plat(s) Recorded
herewith as # 110015345

BASED ON
JAMES CITY COUNTY
GEODETIC CONTROL NETWORK
VIRGINIA STATE PLANE
COORDINATE SYSTEM
SOUTH ZONE (NAD83)(1986)

S:\Jobs\16209-Easement\Survey\Plans\16209-Conservation\EmiP01.dwg, 6/29/2011 1:40:29 PM, ryan.stephenson

City of Williamsburg & County of James City		Circuit Court: This PLAT was recorded on	
		20 July 2011	
at 11:07 AM/PM, PB		PG	
DOCUMENT # 110015345			
BETSY B. WOOLRIDGE, CLERK			
		Clerk	
1	03/18/11		TRS
Rev.	Date	Description	Revised By



INES
CONSULTING ENGINEERS
5248 Old Towne Road, Suite 1
Williamsburg, Virginia 23186
Phone: (757) 253-0040
Fax: (757) 220-8994
www.aesva.com

PLAT SHOWING CONSERVATION EASEMENT
EXTINGUISHMENT AND EXCHANGE BETWEEN
WILLIAMSBURG LANDING, INC.
AND JAMES CITY COUNTY

JAMESTOWN DISTRICT JAMES CITY COUNTY VIRGINIA

Project Contacts: TCS	
Project Number: 8162-09	
Scale: 1"=150'	Date: 2/18/11
Sheet Number	
2 OF 4	