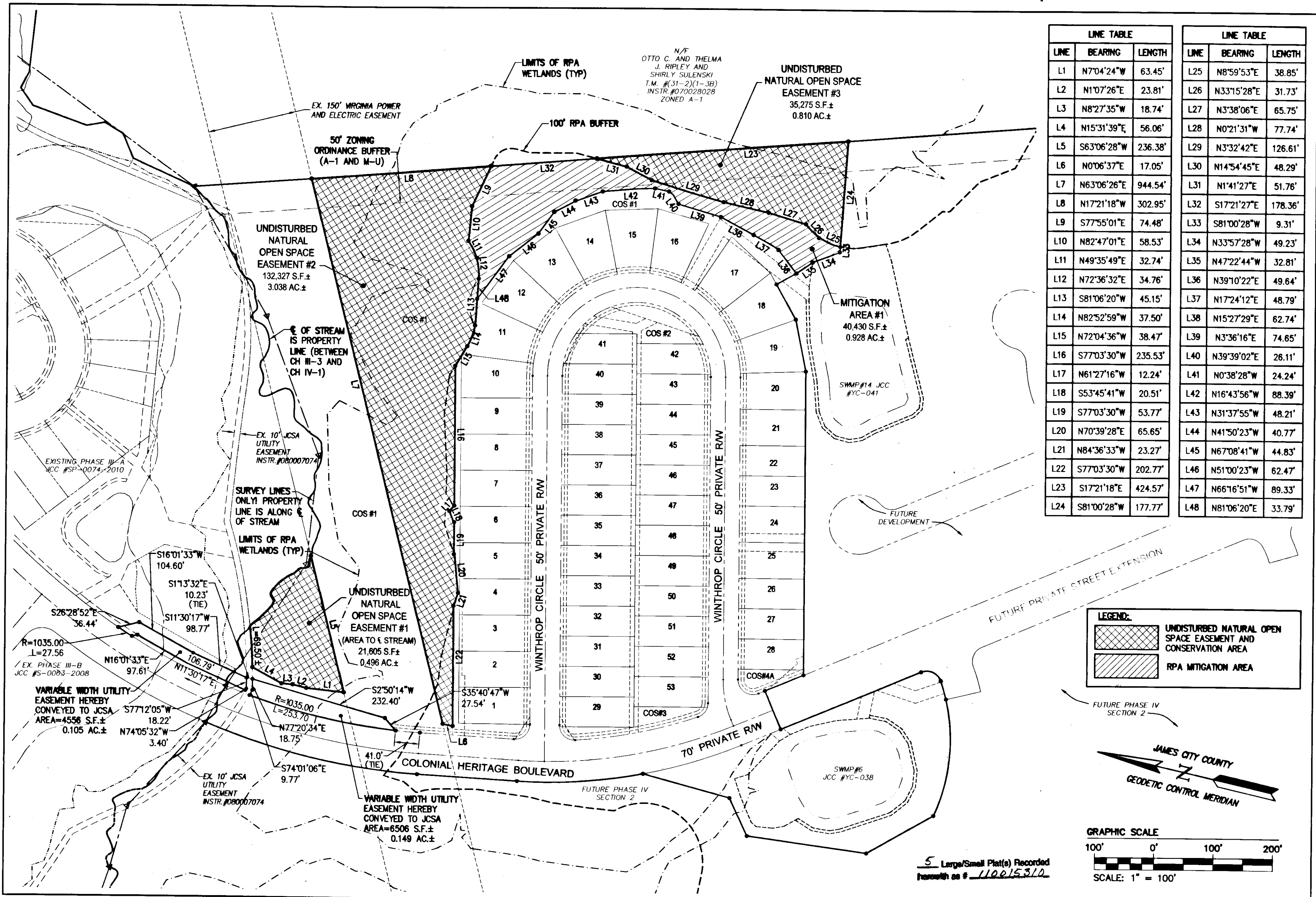


110015310



LINE TABLE			LINE TABLE		
LINE	BEARING	LENGTH	LINE	BEARING	LENGTH
L1	N7°04'24"W	63.45'	L25	N8°59'53"E	38.85'
L2	N1°07'26"E	23.81'	L26	N33°15'28"E	31.73'
L3	N8°27'35"W	18.74'	L27	N3°38'06"E	65.75'
L4	N15°31'39"E	56.06'	L28	N0°21'31"W	77.74'
L5	S63°06'28"W	236.38'	L29	N3°32'42"E	126.61'
L6	N0°06'37"E	17.05'	L30	N14°54'45"E	48.29'
L7	N63°06'26"E	944.54'	L31	N1°41'27"E	51.76'
L8	N17°21'18"W	302.95'	L32	S17°21'27"E	178.36'
L9	S77°55'01"E	74.48'	L33	S81°00'28"W	9.31'
L10	N82°47'01"E	58.53'	L34	N33°57'28"W	49.23'
L11	N49°35'49"E	32.74'	L35	N47°22'44"W	32.81'
L12	N72°36'32"E	34.76'	L36	N39°10'22"E	49.64'
L13	S81°06'20"W	45.15'	L37	N17°24'12"E	48.79'
L14	N82°52'59"W	37.50'	L38	N15°27'29"E	62.74'
L15	N72°04'36"W	38.47'	L39	N3°36'16"E	74.65'
L16	S77°03'30"W	235.53'	L40	N39°39'02"E	26.11'
L17	N61°27'16"W	12.24'	L41	N0°38'28"W	24.24'
L18	S53°45'41"W	20.51'	L42	N16°43'56"W	88.39'
L19	S77°03'30"W	53.77'	L43	N31°37'55"W	48.21'
L20	N70°39'28"E	65.65'	L44	N41°50'23"W	40.77'
L21	N84°36'33"W	23.27'	L45	N67°08'41"W	44.83'
L22	S77°03'30"W	202.77'	L46	N51°00'23"W	62.47'
L23	S17°21'18"E	424.57'	L47	N66°16'51"W	89.33'
L24	S81°00'28"W	177.77'	L48	N81°06'20"E	33.79'

**LEGEND:**

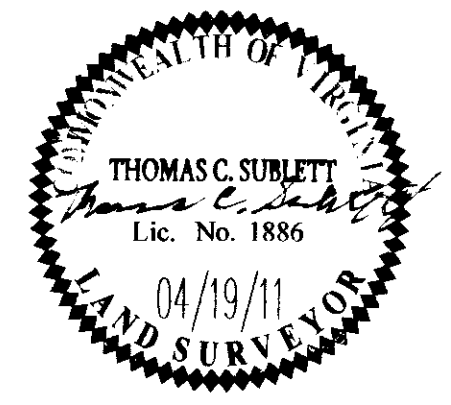
- UNDISTURBED NATURAL OPEN SPACE EASEMENT AND CONSERVATION AREA
- RPA MITIGATION AREA

JAMES CITY COUNTY  
 GEODETIC CONTROL MERIDIAN

GRAPHIC SCALE  
 100' 0' 100' 200'  
 SCALE: 1" = 100'

5 Large/Small Plat(s) Recorded  
 herewith as # 110015310

City of Williamsburg & County of James City Circuit Court: This PLAT was recorded on at 10:28 AM/PM, PG- DOCUMENT # 110015310 BETSY B. WOOLRIDGE, CLERK <i>Betsy B. Woolridge</i> Clerk	TCS Revised By
1 4/19/11	
Rev. Date Description	



**NES**  
 CONSULTING ENGINEERS  
 Hampton Roads | Central Virginia | Middle Peninsula

5248 Olde Towne Road, Suite 1  
 Williamsburg, Virginia 23188  
 Phone: (757) 253-0040  
 Fax: (757) 220-8994  
 www.aesva.com

**PLAT OF SUBDIVISION  
 COLONIAL HERITAGE  
 PHASE IV, SECTION 1-A  
 LOTS 1-53  
 PREPARED FOR COLONIAL HERITAGE LLC**

STONEHOUSE DISTRICT JAMES CITY COUNTY VIRGINIA

Project Contact: HWP  
 Project Number: 8881-40-1A  
 Scale: 1"=100' Date: 02/07/11  
 Sheet Number  
**5 of 5**