

LOT/OPEN SPACE CURVE TABLE						
CURVE #	DELTA	RADIUS	LENGTH	TANGENT	CHORD	CHORD BEARING
C11	6°56'32"	175.00'	21.20'	10.61'	21.19'	N80°31'46"E
C12	17°59'50"	175.00'	54.97'	27.71'	54.74'	S87°00'03"E
C13	17°59'50"	175.00'	54.97'	27.71'	54.74'	S69°00'13"E
C14	17°59'50"	175.00'	54.97'	27.71'	54.74'	S51°00'23"E
C15	17°59'50"	175.00'	54.97'	27.71'	54.74'	S33°00'33"E
C16	17°59'50"	175.00'	54.97'	27.71'	54.74'	S15°00'43"E

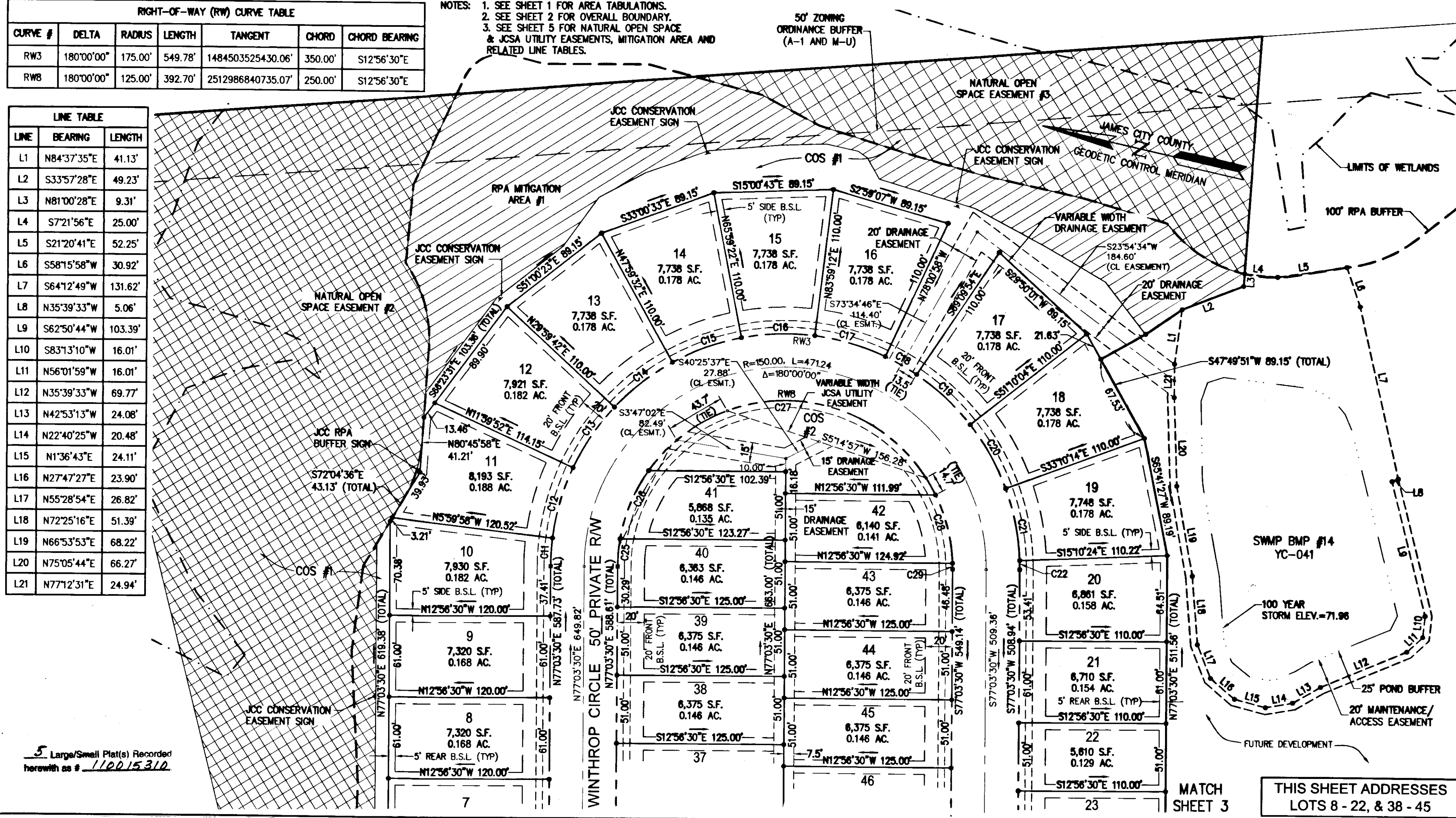
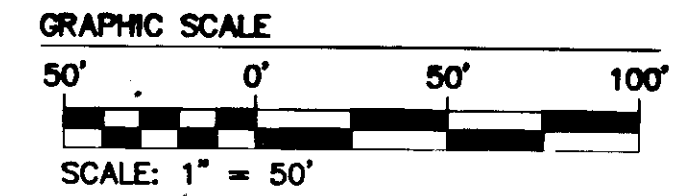
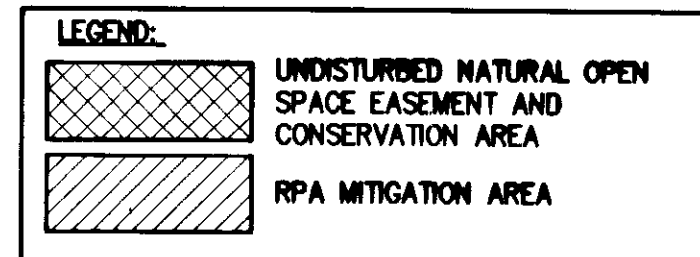
LOT/OPEN SPACE CURVE TABLE						
CURVE #	DELTA	RADIUS	LENGTH	TANGENT	CHORD	CHORD BEARING
C17	17°59'50"	175.00'	54.97'	27.71'	54.74'	S2°59'07"W
C18	8°51'05"	175.00'	27.03'	13.54'	27.01'	S16°24'34"W
C19	17°59'50"	175.00'	54.97'	27.71'	54.74'	S29°50'01"W
C20	17°59'50"	175.00'	54.97'	27.71'	54.74'	S47°49'51"W
C21	17°59'50"	175.00'	54.97'	27.71'	54.74'	S65°49'41"W
C22	21°3'54"	175.00'	6.82'	3.41'	6.82'	S75°56'33"W

LOT/OPEN SPACE CURVE TABLE						
CURVE #	DELTA	RADIUS	LENGTH	TANGENT	CHORD	CHORD BEARING
C25	9°32'06"	125.00'	20.80'	10.43'	20.78'	N81°49'33"E
C26	25°28'12"	125.00'	55.57'	28.25'	55.11'	S80°40'17"E
C27	118°37'23"	125.00'	258.80'	210.62'	214.99'	S8°37'30"E
C28	24°17'51"	125.00'	53.01'	26.91'	52.61'	S62°50'07"W
C29	2°04'28"	125.00'	4.53'	2.26'	4.53'	S76°01'17"W

RIGHT-OF-WAY (RW) CURVE TABLE						
CURVE #	DELTA	RADIUS	LENGTH	TANGENT	CHORD	CHORD BEARING
RW3	180°00'00"	175.00'	549.78'	148450.3525430.06'	350.00'	S12°56'30"E
RWB	180°00'00"	125.00'	392.70'	2512986840735.07'	250.00'	S12°56'30"E

LINE TABLE		
LINE	BEARING	LENGTH
L1	N84°37'35"E	41.13'
L2	S33°57'28"E	49.23'
L3	N81°00'28"E	9.31'
L4	S7°21'56"E	25.00'
L5	S21°20'41"E	52.25'
L6	S58°15'58"W	30.92'
L7	S64°12'49"W	131.62'
L8	N35°39'33"W	5.06'
L9	S62°50'44"W	103.39'
L10	S83°13'10"W	16.01'
L11	N56°01'59"W	16.01'
L12	N35°39'33"W	69.77'
L13	N42°53'13"W	24.08'
L14	N22°40'25"W	20.48'
L15	N1°36'43"E	24.11'
L16	N27°47'27"E	23.90'
L17	N55°28'54"E	26.82'
L18	N72°25'16"E	51.39'
L19	N66°53'53"E	68.22'
L20	N75°05'44"E	66.27'
L21	N77°12'31"E	24.94'

NOTES: 1. SEE SHEET 1 FOR AREA TABULATIONS.  
2. SEE SHEET 2 FOR OVERALL BOUNDARY.  
3. SEE SHEET 5 FOR NATURAL OPEN SPACE & JCSA UTILITY EASEMENTS, MITIGATION AREA AND RELATED LINE TABLES.

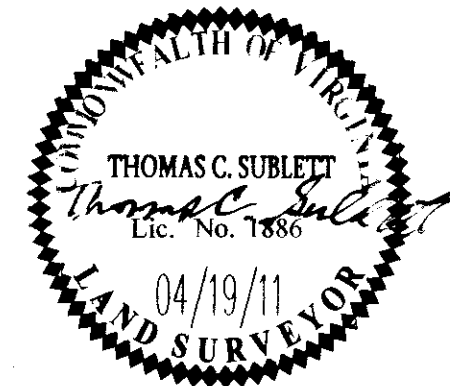


5 Large/Small Plat(s) Recorded herewith as # 110015310

MATCH SHEET 3  
THIS SHEET ADDRESSES LOTS 8 - 22, & 38 - 45

1	4/19/11	REVIEWED FOR COUNTY COMMISSIONERS	TCS
Rev	Date	Description	Revised By

City of Williamsburg & County of James City  
Circuit Court: This PLAT was recorded on 20 July 2011  
at 10:28 AM/PM, PG -  
DOCUMENT # 110015310  
BETSY B. WOOLRIDGE, CLERK  
*Betsy B. Woolridge* Clerk



**AES**  
CONSULTING ENGINEERS  
Hampton Roads | Central Virginia | Middle Peninsula  
5248 Olde Towne Road, Suite 1  
Williamsburg, Virginia 23188  
Phone: (757) 253-0040  
Fax: (757) 220-8994  
www.aesva.com

**PLAT OF SUBDIVISION  
COLONIAL HERITAGE  
PHASE IV, SECTION 1-A  
LOTS 1-53  
PREPARED FOR COLONIAL HERITAGE LLC**  
STONEHOUSE DISTRICT | JAMES CITY COUNTY | VIRGINIA

Project Contacts: HWP  
Project Number: 8881-40-1A  
Scale: 1"=50' Date: 02/07/11  
Sheet Number: 4 of 5