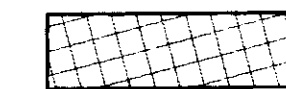


110014410

City of Williamsburg & County of James City
Circuit Court: This PLAT was recorded on
July 7, 2011
at 1:09 AM/PM, PB. PG. --
DOCUMENT # 110014410
BETSY B. WOOLRIDGE, CLERK
Betsy B. Woolridge Clerk

2 Large/Small Plat(s) Recorded
herewith as # 110014410

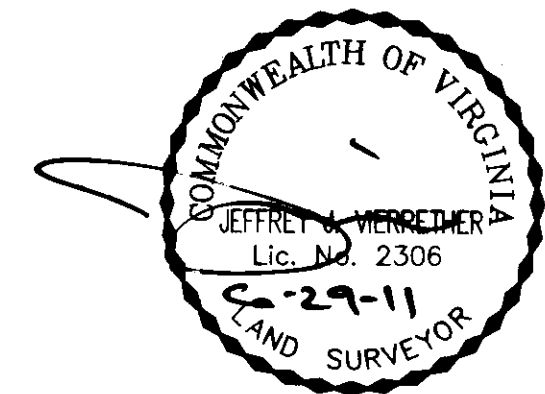
EASEMENT LEGEND

 DENOTES VARIABLE WIDTH UTILITY
EASEMENT HEREBY ESTABLISHED
FOR THE AREA = 72,210 S.F.
OR 1.658 AC.

LEGEND

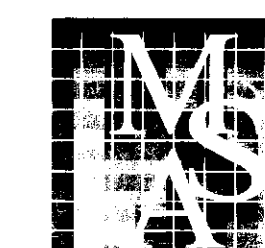
- IRON PIN FOUND - PIN(F)
- POINT
- CONC. STEEL PIN FOUND - PIN(F)
- CONC. STEEL PIN SET - PIN(S)

VIRGINIA STATE PLANE COORDINATE
SYSTEM, SOUTH ZONE, JAMES CITY
COUNTY GEODETIC CONTROL NETWORK

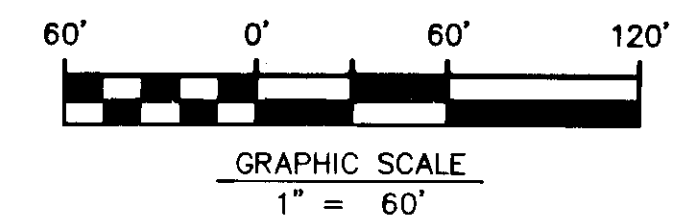


CURVE TABLE						
CURVE	RADIUS	ARC	TANGENT	CHORD	CHORD BRG	DELTA
1	4,000.32	23.99	12.00	23.99	S 00°49'29" E	00°20'37"
2	4,000.32	33.01	16.50	33.01	S 01°13'59" E	00°28'22"
3	4,000.32	57.00	28.50	57.00	S 01°30'40" E	00°48'59"

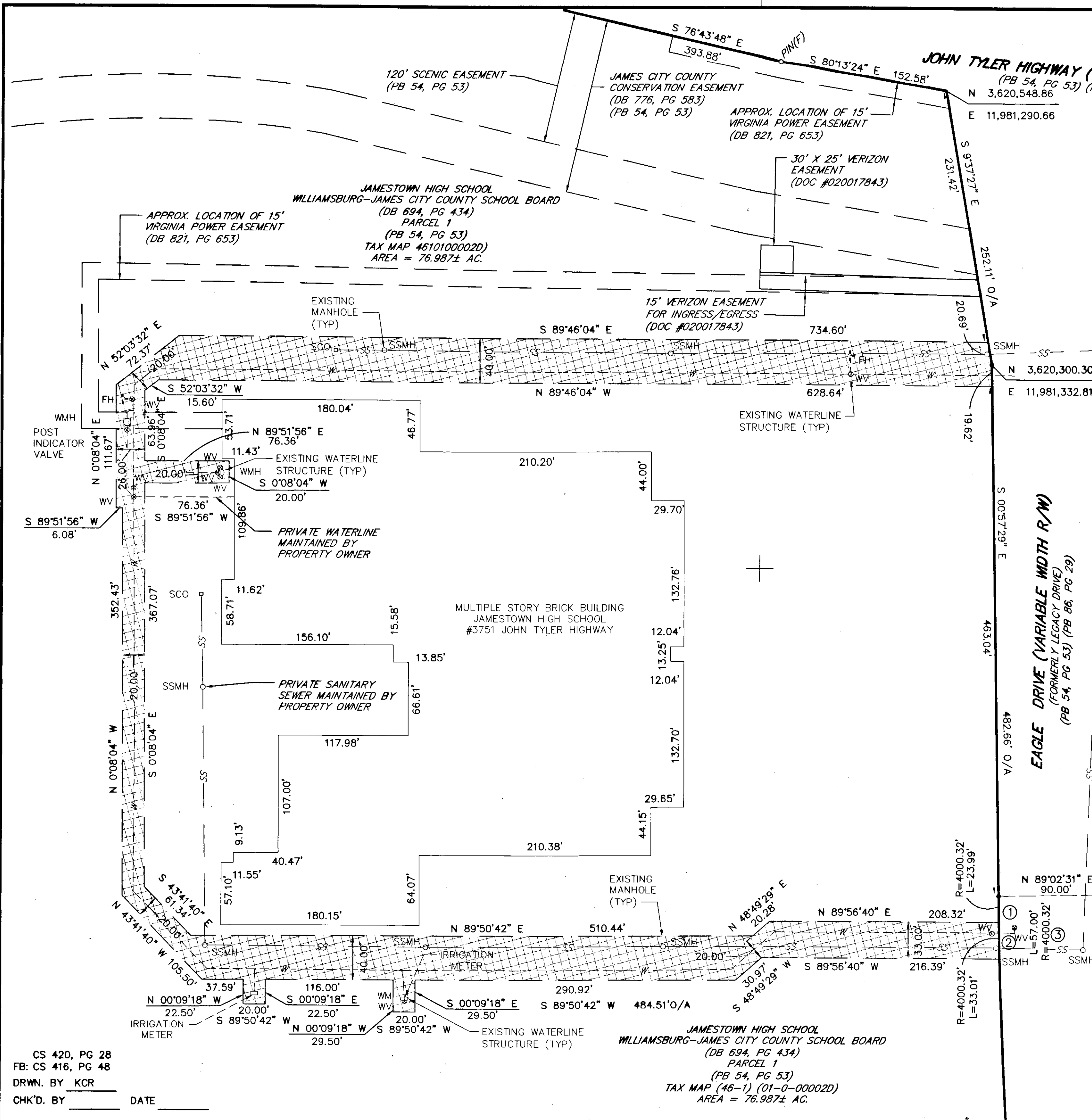
PLAT SHOWING
VARIABLE WIDTH UTILITY EASEMENT
HEREBY ESTABLISHED ON TAX PARCEL 4610100002D
PARCEL 1 (MB 54, PG 53)
(JAMESTOWN HIGH SCHOOL)
TO
THE JAMES CITY COUNTY SERVICE AUTHORITY
FROM
WILLIAMSBURG-JAMES CITY COUNTY SCHOOL BOARD
(DB 694, PG 434)
BERKELEY MAGISTERIAL DISTRICT JAMES CITY COUNTY, VA.
JUNE 29, 2011



MSA, P.C.
Environmental Sciences • Planning • Surveying
Civil & Environmental Engineering • Landscape Architecture
5033 Rouse Drive, Virginia Beach, VA 23462
757-490-9264 (Ofc) 757-490-0634 (Fax)
www.msaonline.com



JOB #09113
SHEET 2 OF 2



CS 420, PG 28
FB: CS 416, PG 48
DRWN. BY KCR
CHK'D. BY _____ DATE _____

JAMESTOWN HIGH SCHOOL
WILLIAMSBURG-JAMES CITY COUNTY SCHOOL BOARD
(DB 694, PG 434)
PARCEL 1
(PB 54, PG 53)
TAX MAP (46-1) (01-0-00002D)
AREA = 76.987± AC.