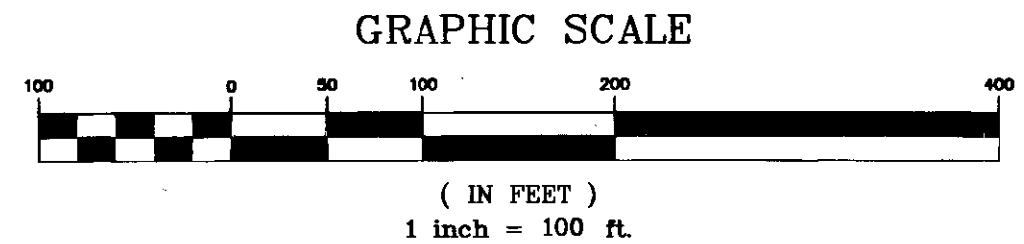
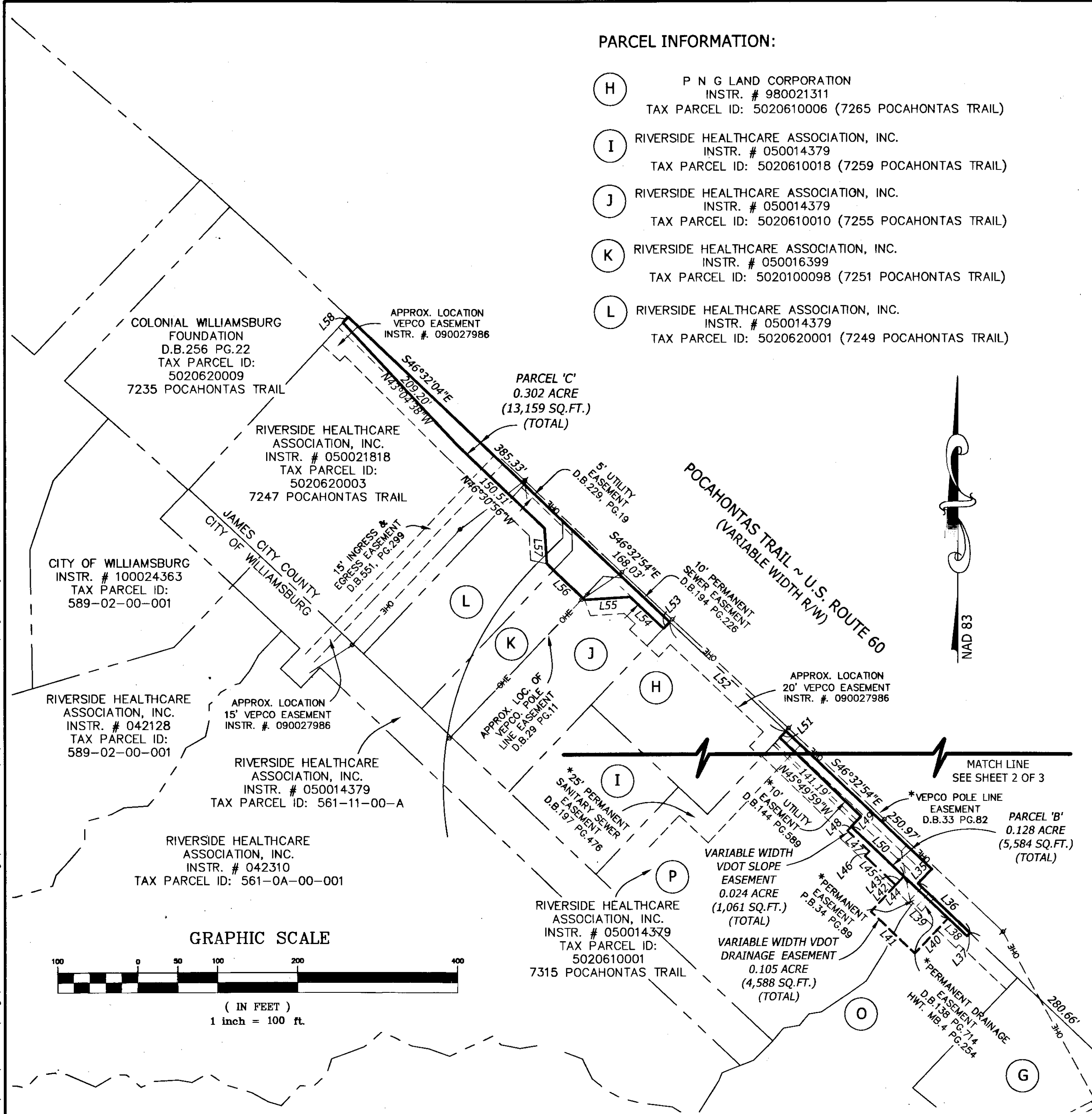


110013555

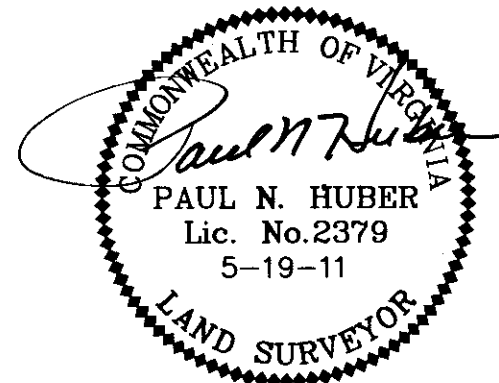
PARCEL INFORMATION:

- (H) P N G LAND CORPORATION
INSTR. # 980021311
TAX PARCEL ID: 5020610006 (7265 POCAHONTAS TRAIL)
- (I) RIVERSIDE HEALTHCARE ASSOCIATION, INC.
INSTR. # 050014379
TAX PARCEL ID: 5020610018 (7259 POCAHONTAS TRAIL)
- (J) RIVERSIDE HEALTHCARE ASSOCIATION, INC.
INSTR. # 050014379
TAX PARCEL ID: 5020610010 (7255 POCAHONTAS TRAIL)
- (K) RIVERSIDE HEALTHCARE ASSOCIATION, INC.
INSTR. # 050016399
TAX PARCEL ID: 5020100098 (7251 POCAHONTAS TRAIL)
- (L) RIVERSIDE HEALTHCARE ASSOCIATION, INC.
INSTR. # 050014379
TAX PARCEL ID: 5020620001 (7249 POCAHONTAS TRAIL)

LINE TABLE			LINE TABLE		
LINE	BEARING	DISTANCE	LINE	BEARING	DISTANCE
L1	N46°32'54"W	97.50'	L36	S46°32'54"E	89.44'
L2	N37°25'39"W	101.99'	L37	S43°27'06"W	5.55'
L3	N46°35'35"W	27.32'	L38	N46°36'49"W	32.44'
L4	N65°44'47"W	76.96'	L39	S46°36'49"E	76.00'
L5	S46°23'51"E	26.81'	L40	S43°27'06"W	60.41'
L6	S43°36'09"W	20.00'	L41	N46°32'54"W	76.00'
L7	N46°23'51"W	83.76'	L42	N43°27'06"E	45.33'
L8	S65°44'47"E	60.36'	L43	S43°27'06"W	15.00'
L9	N65°44'47"W	12.75'	L44	N43°27'06"E	60.33'
L10	N65°44'47"W	3.85'	L45	N46°36'49"W	53.22'
L11	S80°43'59"W	56.22'	L46	N43°23'11"E	8.00'
L12	N01°42'09"W	45.84'	L47	N46°36'49"W	37.54'
L13	N46°30'56"W	96.53'	L48	N43°23'11"E	7.00'
L14	N43°22'03"W	202.93'	L49	N43°23'11"E	17.78'
L15	S85°46'34"W	41.34'	L50	S46°36'49"E	90.78'
L16	N00°36'23"E	29.92'	L51	N43°27'06"E	11.24'
L17	N45°21'38"W	46.39'	L52	N46°32'54"W	200.00'
L18	N62°31'41"E	9.44'	L53	S43°26'57"W	11.11'
L19	N66°36'48"E	27.19'	L54	N46°31'10"W	57.35'
L20	S46°30'56"E	88.63'	L55	S86°36'35"W	56.98'
L21	S43°23'38"W	10.00'	L56	N46°22'25"W	65.19'
L22	N46°36'22"W	10.00'	L57	N03°30'43"W	44.33'
L23	N43°23'38"E	10.13'	L58	N42°46'12"E	9.53'
L24	S43°22'03"E	2.11'	L59	---	---
L25	S46°30'56"E	7.90'			
L26	N43°22'03"W	200.60'			
L27	---	---			
L28	---	---			
L29	---	---			
L30	---	---			
L31	---	---			
L32	---	---			
L33	---	---			
L34	---	---			
L35	S43°27'06"W	25.00'			



City of Williamsburg & County of James City
Circuit Court: This PLAT was recorded on
at 3:57 AM/PM, PB PG
DOCUMENT # 110013555
BETSY B. WOOLRIDGE, CLERK
Betsy B. Woolridge Clerk



3 Large/Small Plat(s) Recorded
herewith as # 110013555

PLAT SHOWING 3 PARCELS OF
LAND AND VARIOUS EASEMENTS
LYING SOUTH OF POCAHONTAS
TRAIL ~ U.S. ROUTE 60

ROBERTS DISTRICT	JAMES CITY CO., VA.
DATE: MAY 19, 2011	SCALE: 1"=100'
SHEET: 3 OF 3	J.N.: 27676
DRAWN BY: M.S.F.	CHECK BY: M.C.S.

Y:\901\27676\dwg\27676V-XPESMT.dwg | Plotted on 6/9/2011 10:04 AM | by Marilyn Farmer

THIS DRAWING PREPARED AT THE
 1001 Boulder Parkway Suite 300 Richmond, VA 23225
 TEL 804.200.6500 FAX 804.560.1016 www.timmons.com
 Technology
 Infrastructure
 Residential
 Site Development
TIMMONS GROUP