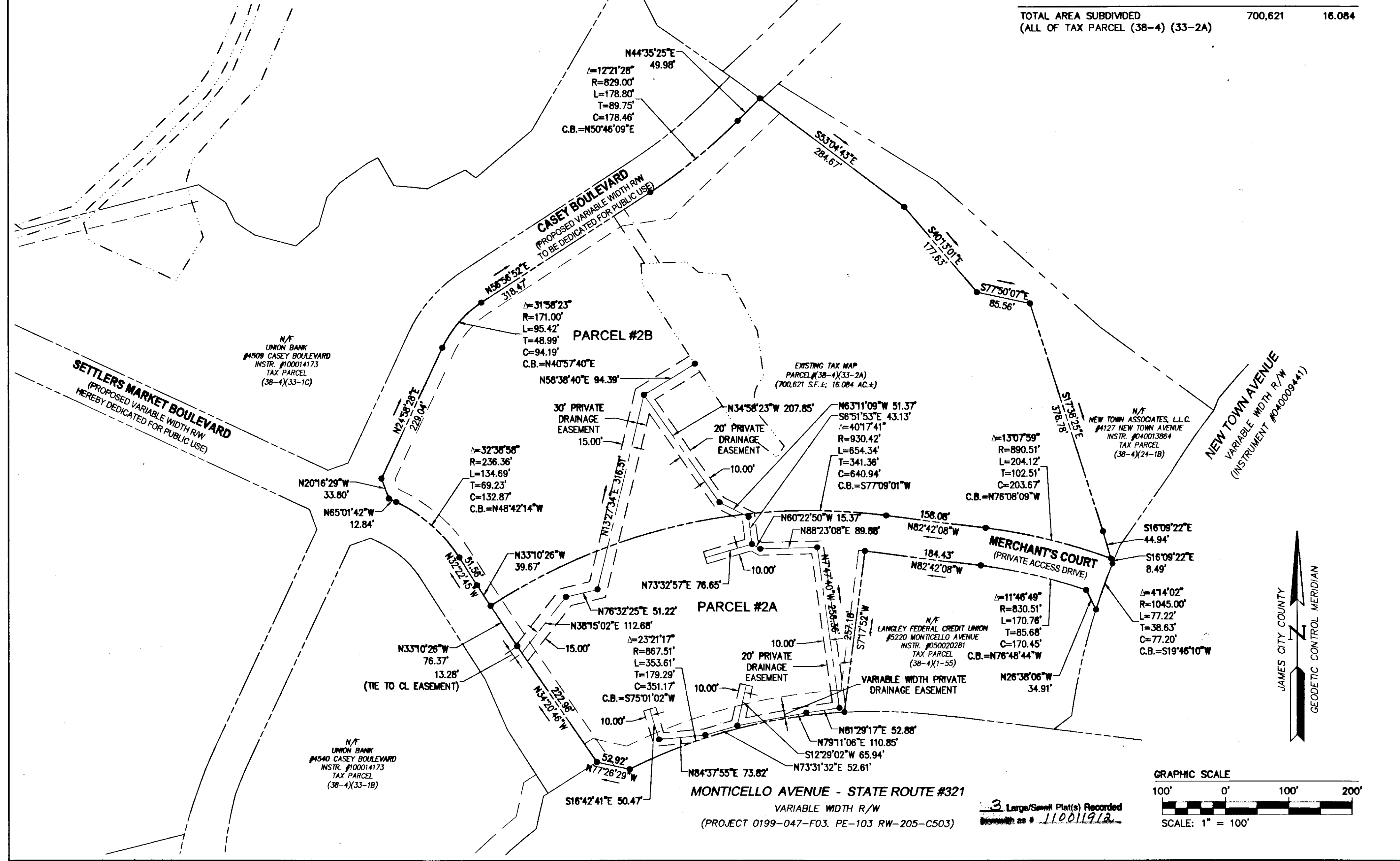


110011912

THE 30' PRIVATE DRAINAGE EASEMENT, 20' PRIVATE DRAINAGE EASEMENT AND VARIABLE WIDTH PRIVATE DRAINAGE EASEMENT SHOWN ON THIS PLAT ARE A PART OF THE STORM WATER DRAINAGE FACILITY EASEMENTS CREATED BY AND TO BE MAINTAINED IN ACCORDANCE WITH THE TERM OF SECTIONS 2.3, 2.4 AND 2.5 OF THE DECLARATION OF EASEMENTS AND COVENANTS DATED MAY 11, 2007 MADE BY AIG BAKER WILLIAMSBURG, LLC AND NEW TOWN ASSOCIATES, LLC AND RECORDED IN THE CLERK'S OFFICE OF THE CITY COURT FOR THE CITY OF WILLIAMSBURG AND COUNTY OF JAMES CITY AS INSTRUMENT NO. 070014344.

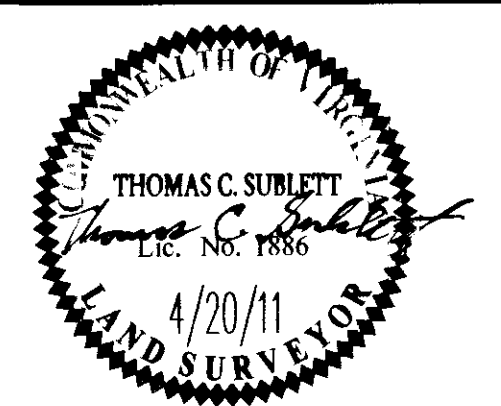
N/F
NEW TOWN ASSOCIATES, LLC
#4400 CASEY BOULEVARD
INSTR. #030027269
TAX PARCEL
(38-4)(1-56)

AREA TABULATION	S.F.±	AC.±
PARCEL 2A	191,662	4.400
PARCEL 2B	508,959	11.684
TOTAL AREA SUBDIVIDED (ALL OF TAX PARCEL (38-4) (33-2A))	700,621	16.084



City of Williamsburg & County of James City
Circuit Court: This PLAT was recorded on
at 2:28 AM/PM on PG
DOCUMENT # 110011912
BETSY B. WOOLRIDGE, CLERK
Betsy B. Woolridge Clerk

Rev	Date	Description	JAG
1	4/20/11		Revised By



AES
CONSULTING ENGINEERS
5248 Old Towne Road, Suite 1
Williamsburg, Virginia 23188
Phone: (757) 253-0040
Fax: (757) 220-8994
www.aesva.com

PLAT OF EASEMENT
PARCEL 2A
NEW TOWN, SECTION 9
"SETTLER'S MARKET AT NEW TOWN"
PROPERTY OF FCP SETTLER'S MARKET, L.L.C. (FCP I)
COUNTY OF JAMES CITY BERKELEY DISTRICT VIRGINIA

Project Contacts: JAG, GAM
Project Number: 0632-99-01S
Scale: 1"=100' Date: 4/20/11
Sheet Number
3 OF 3