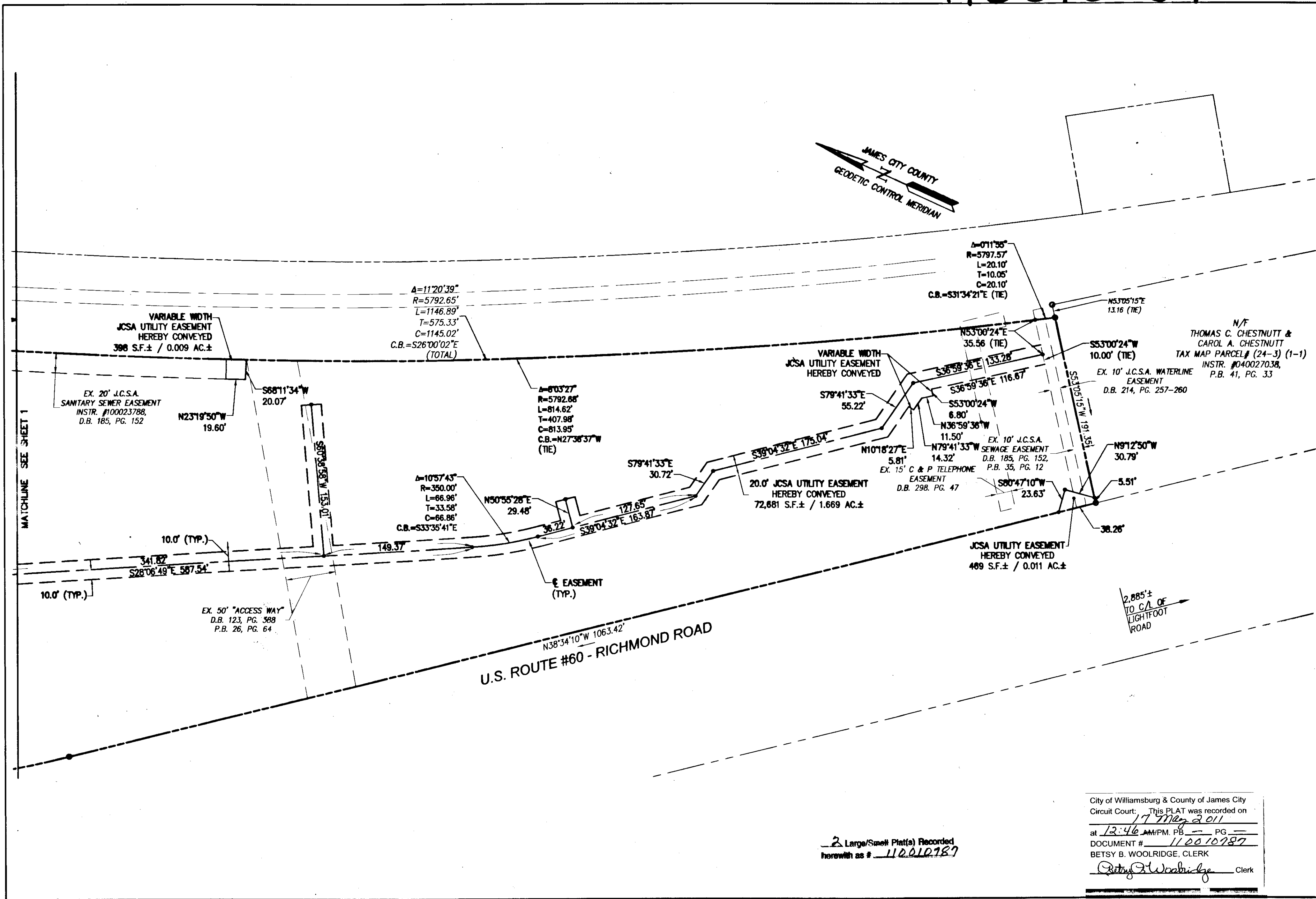


110010787

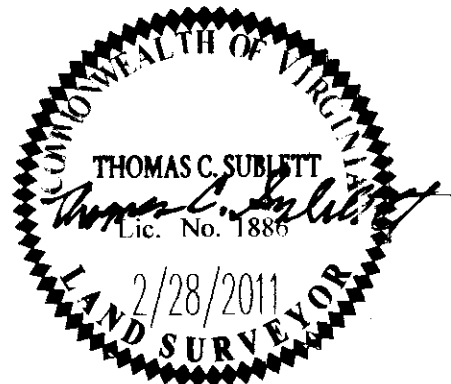


MATCHLINE SEE SHEET 1

City of Williamsburg & County of James City
 Circuit Court: This PLAT was recorded on
 17 May 2011
 at 12:46 AM PM, PG. 1
 DOCUMENT # 110010787
 BETSY B. WOOLRIDGE, CLERK
Betsy Woolridge Clerk

2 Large/Small Plat(s) Recorded
 herewith as # 110010787

Rev	Date	Description	JFS Revised By
1	4/9/2011	REVISED JCSA EASEMENTS	JFS



AES
 CONSULTING ENGINEERS
 5248 Olde Towne Road, Suite 1
 Williamsburg, Virginia 23188
 Phone: (757) 253-0040
 Fax: (757) 220-8994
 www.aesva.com
 Hampton Roads | Central Virginia | Middle Peninsula

**PLAT SHOWING
 JCSA UTILITY EASEMENTS DEDICATED BY
 WILLIAMSBURG POTTERY
 PROPERTIES, LLC. TO
 JAMES CITY SERVICE AUTHORITY**

STONEHOUSE DISTRICT JAMES CITY COUNTY VIRGINIA

Project Contacts: MJR/TCS
 Project Number: 8510-04
 Scale: 1"=60'
 Date: 2/28/2011
 Sheet Number
2 OF 2