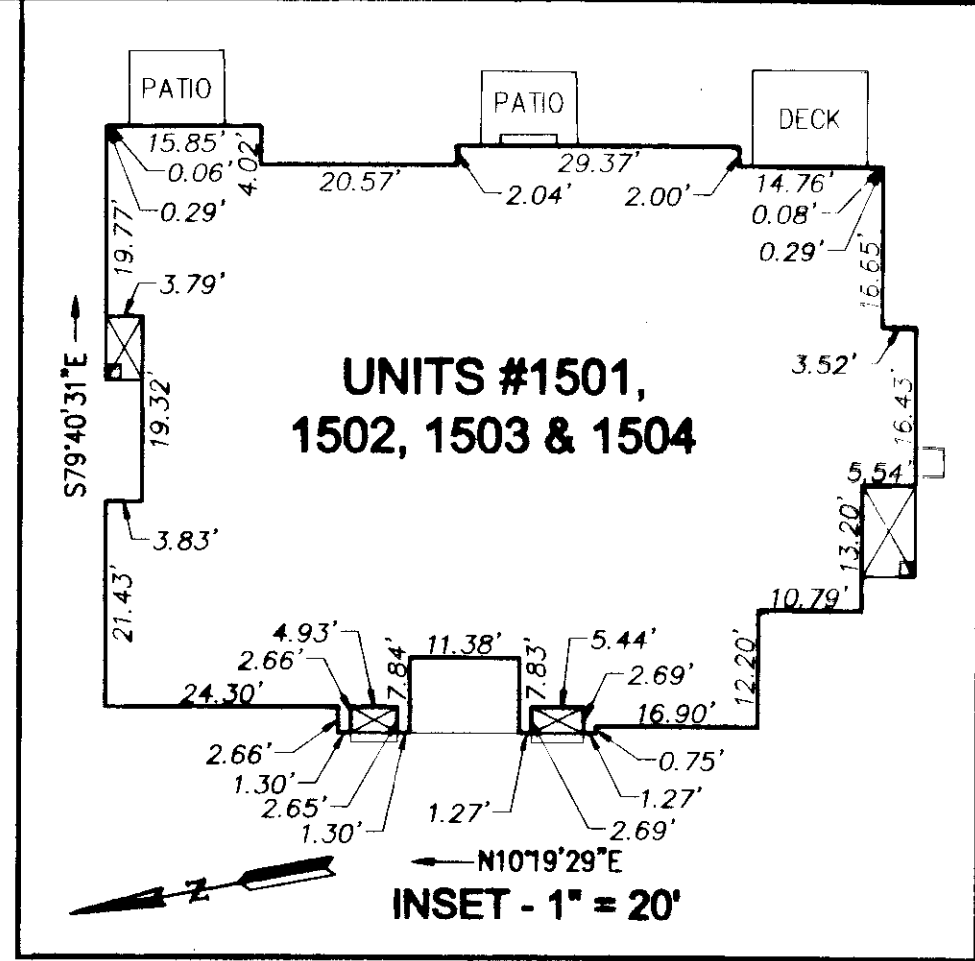
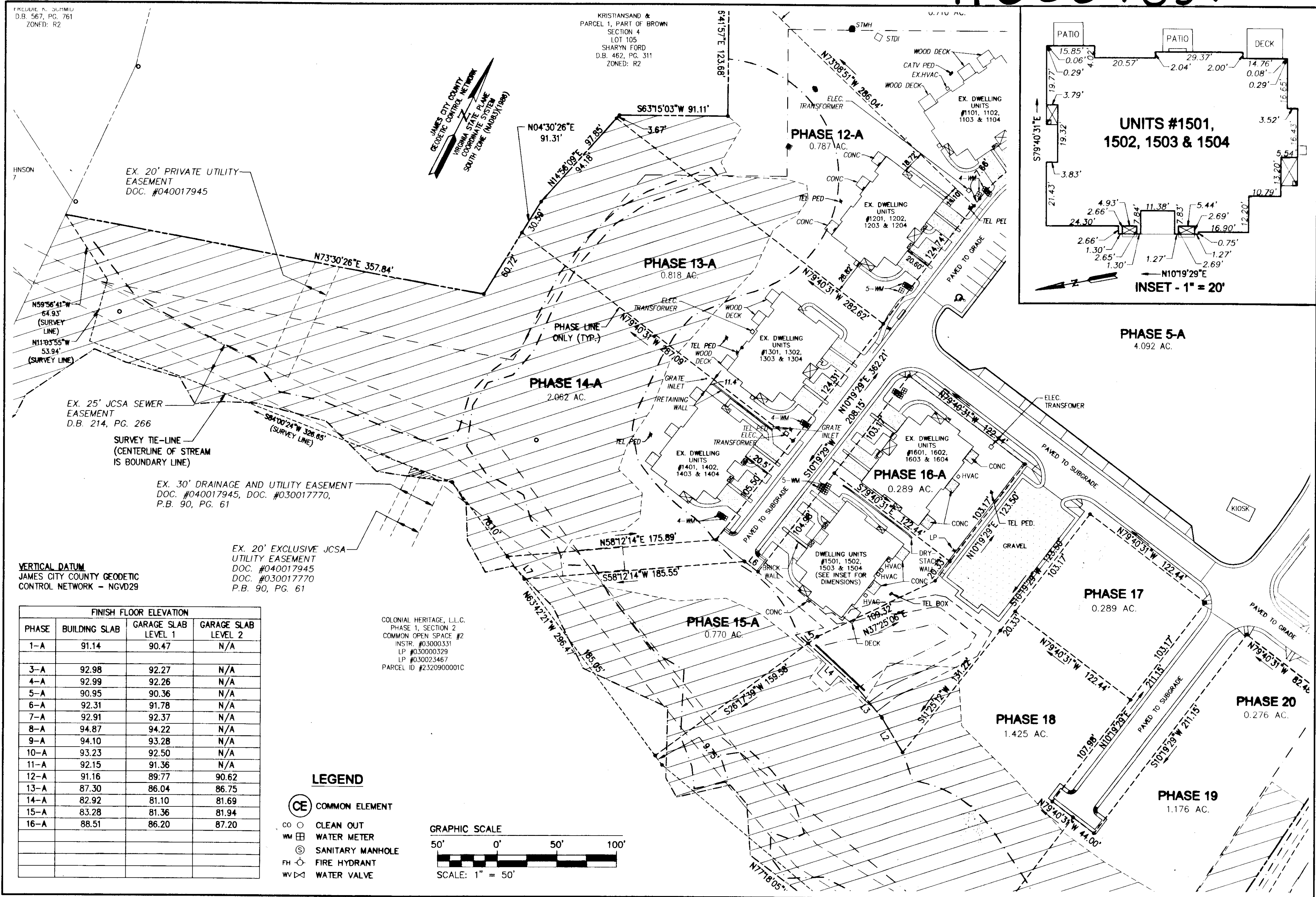


110007834



EX. 20' PRIVATE UTILITY EASEMENT  
DOC. #040017945

EX. 25' JCSA SEWER EASEMENT  
D.B. 214, PG. 266

SURVEY TIE-LINE  
(CENTERLINE OF STREAM IS BOUNDARY LINE)

EX. 30' DRAINAGE AND UTILITY EASEMENT  
DOC. #040017945, DOC. #030017770,  
P.B. 90, PG. 61

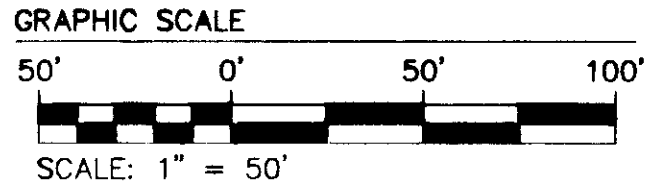
VERTICAL DATUM  
JAMES CITY COUNTY GEODETIC  
CONTROL NETWORK - NGVD29

EX. 20' EXCLUSIVE JCSA  
UTILITY EASEMENT  
DOC. #040017945  
DOC. #030017770  
P.B. 90, PG. 61

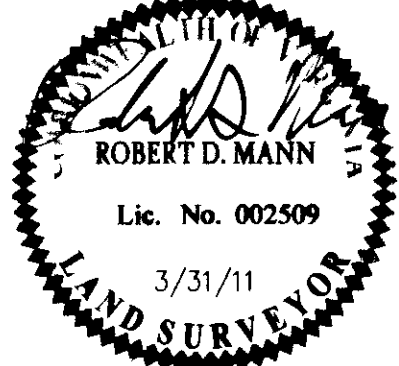
COLONIAL HERITAGE, L.L.C.  
PHASE 1, SECTION 2  
COMMON OPEN SPACE #2  
INSTR. #03000331  
LP #030000329  
LP #030023467  
PARCEL ID #2320900001C

FINISH FLOOR ELEVATION			
PHASE	BUILDING SLAB	GARAGE SLAB LEVEL 1	GARAGE SLAB LEVEL 2
1-A	91.14	90.47	N/A
3-A	92.98	92.27	N/A
4-A	92.99	92.26	N/A
5-A	90.95	90.36	N/A
6-A	92.31	91.78	N/A
7-A	92.91	92.37	N/A
8-A	94.87	94.22	N/A
9-A	94.10	93.28	N/A
10-A	93.23	92.50	N/A
11-A	92.15	91.36	N/A
12-A	91.16	89.77	90.62
13-A	87.30	86.04	86.75
14-A	82.92	81.10	81.69
15-A	83.28	81.36	81.94
16-A	88.51	86.20	87.20

- LEGEND**
- CE COMMON ELEMENT
  - CO CLEAN OUT
  - WM WATER METER
  - S SANITARY MANHOLE
  - FH FIRE HYDRANT
  - WV WATER VALVE



City of Williamsburg & County of James City  
Circuit Court: This PLAT was recorded on  
8 April 2011  
at 12:12 AM/PM, PB PG  
DOCUMENT # 110007834  
BETSY B. WOOLRIDGE, CLERK  
Betsy B. Woolridge Clerk



Large/Small Plat(s) Recorded  
herewith as # 110007834

"EXHIBIT 1"  
PLAT OF CONDOMINIUM  
**WILLIAMSBURG VILLAGE AT NORGE CONDOMINIUM**  
PHASE 15-A  
UNITS #1501, 1502, 1503, AND 1504  
STONEHOUSE DISTRICT COUNTY OF JAMES CITY VIRGINIA

Project Contacts: AES  
Project Number: 0200-02-B  
Scale: 1"=30' Date: 03-31-2011  
Sheet Number  
**2 OF 9**