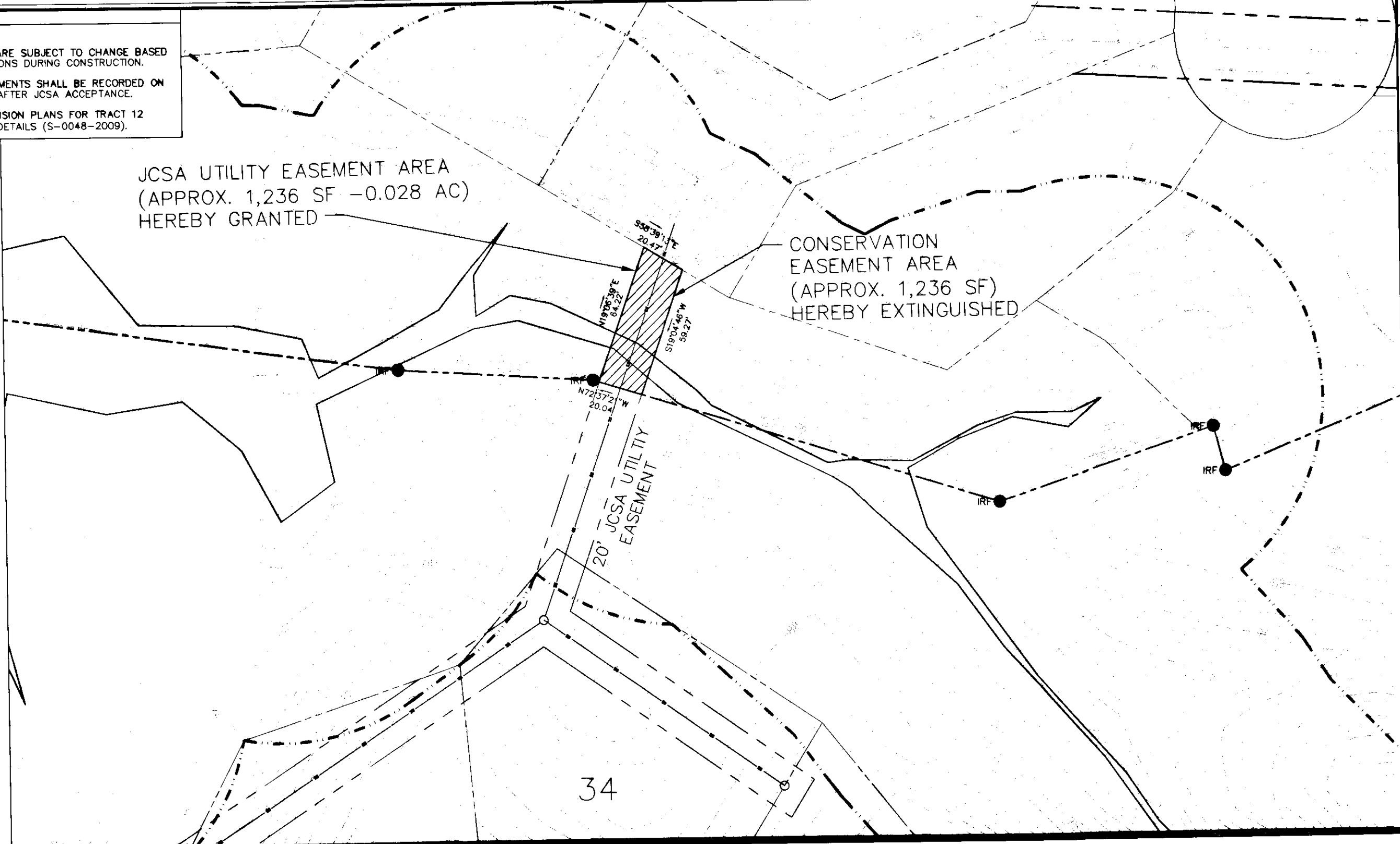


110007791

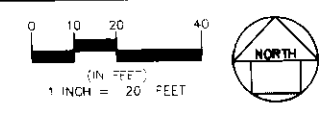
- NOTES:
1. ALL EASEMENTS ARE SUBJECT TO CHANGE BASED ON FIELD CONDITIONS DURING CONSTRUCTION.
 2. ALL UTILITY EASEMENTS SHALL BE RECORDED ON THE FINAL PLAT AFTER JCSA ACCEPTANCE.
 3. REFER TO SUBDIVISION PLANS FOR TRACT 12 FOR ADDITIONAL DETAILS (S-0048-2009).

JCSA UTILITY EASEMENT AREA
(APPROX. 1,236 SF - 0.028 AC)
HEREBY GRANTED

CONSERVATION
EASEMENT AREA
(APPROX. 1,236 SF)
HEREBY EXTINGUISHED



34



DATE: 09/29/10
PROJECT: 08-4050

City of Williamsburg & County of James City
Circuit Court: This PLAT was recorded on
7 April 2011
at 12:03 AM/PM. PB. PG
DOCUMENT # 110007791
BETSY B. WOOLRIDGE, CLERK
Betsy B. Woolridge Clerk

STONEHOUSE - TRACT 12
GS STONEHOUSE GREEN LAND SUB, LLC
SEWER EASEMENT EXHIBIT-STONEHOUSE GLEN
SHEET 2
JAMES CITY COUNTY, VA

3 Large/Small Plat(s) Recorded
herewith as # 110007791

WSP • SELLS
Transportation & Infrastructure
15401 Weston Parkway Suite 100 • Cary, NC 27513 • 919.678.0035
www.wspells.com