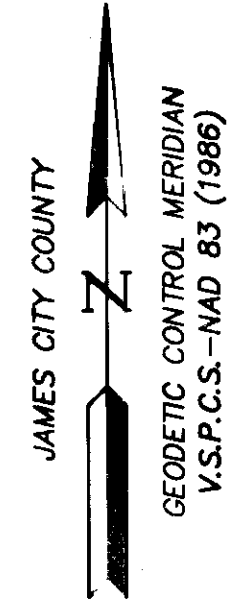
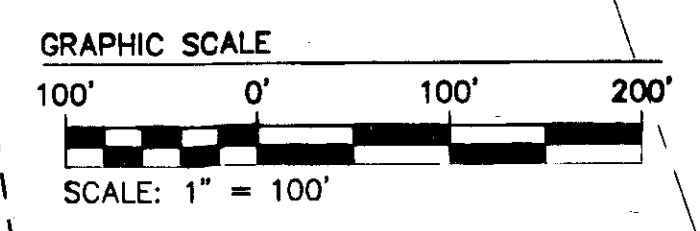
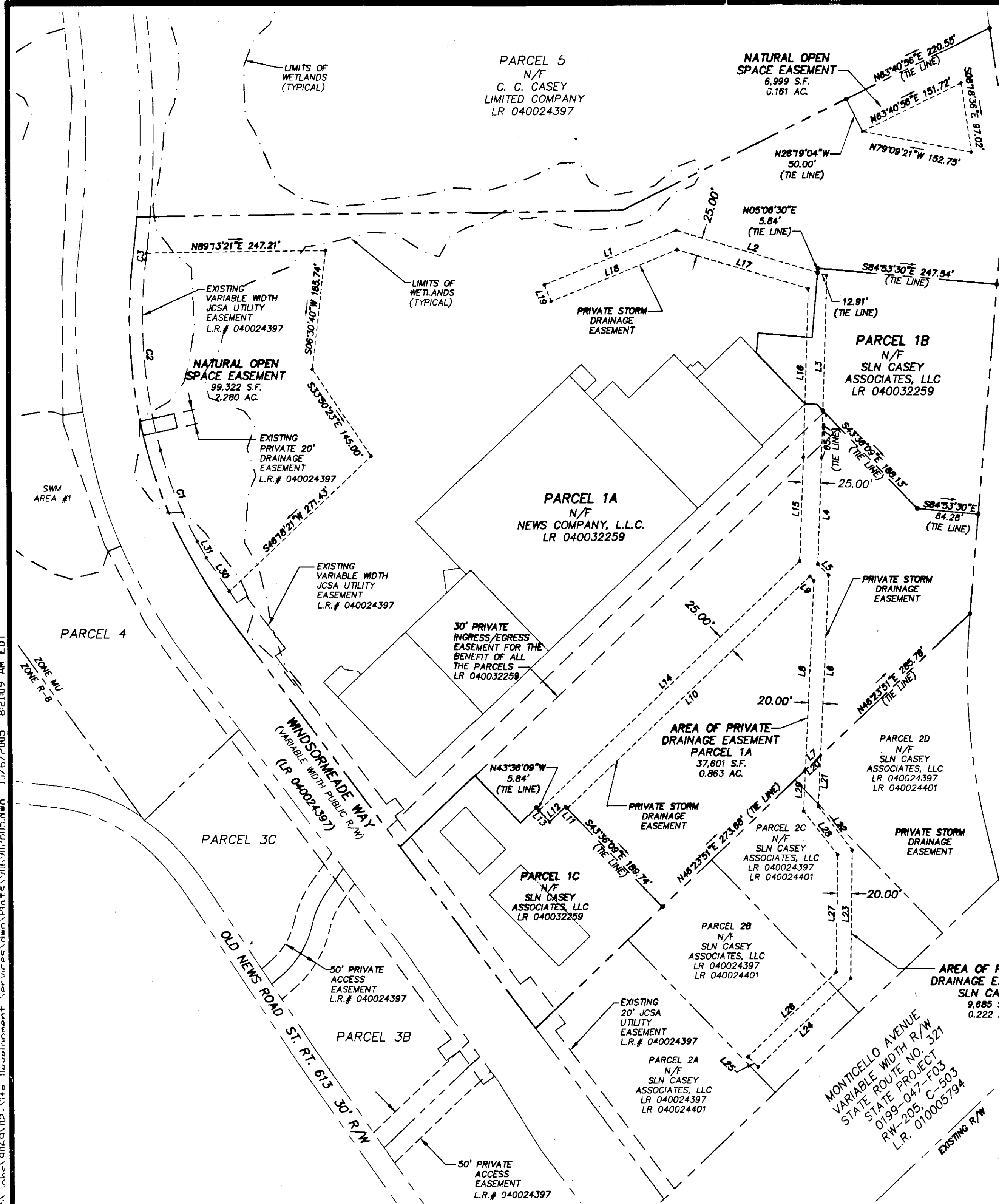


110003835

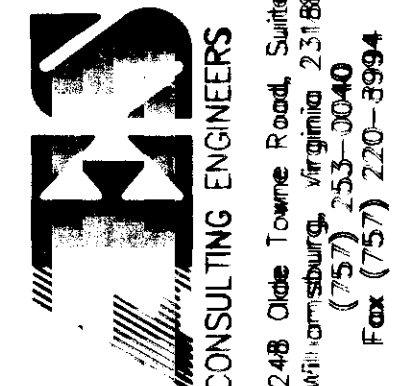


LINE	DIRECTION	LENGTH
L1	N67°46'09\"E	196.44'
L2	S73°09'17\"E	217.25'
L3	S01°48'23\"W	253.26'
L4	S02°11'55\"W	147.37'
L5	S43°41'58\"E	21.58'
L6	S02°46'20\"W	250.63'
L7	S46°23'51\"W	28.99'
L8	N02°46'20\"E	263.03'
L9	N43°41'58\"W	8.27'
L10	S46°23'51\"W	464.02'
L11	N43°36'09\"W	3.29'
L12	S46°23'51\"W	30.00'
L13	N43°36'09\"W	21.71'
L14	N46°23'51\"E	498.97'
L15	N02°11'55\"E	143.96'
L16	N01°48'23\"E	234.00'
L17	N73°09'17\"W	189.20'
L18	S67°46'09\"W	187.56'
L19	N22°13'51\"W	25.00'
L20	N46°23'51\"E	28.99'
L21	S02°41'30\"W	70.43'
L22	S37°30'27\"E	76.50'
L23	S00°55'43\"W	178.17'
L24	S46°23'51\"W	177.62'
L25	N43°36'09\"W	20.00'
L26	N46°23'51\"E	169.24'
L27	N00°55'43\"E	162.82'
L28	N37°30'27\"W	76.85'
L29	N02°39'42\"E	56.79'
L30	S34°11'08\"E	56.58'
L31	S28°33'20\"E	25.57'

CURVE	DELTA	RADIUS	ARC	TANGENT	CHORD	CHORD BEARING
C1	132°2'53\"	584.00	136.39	68.51	136.08	N21°51'54\"W
C2	22°03'00\"	694.50	267.27	135.31	265.63	N04°08'57\"W
C3	0°20'30\"	1480.50	8.83	4.41	8.83	N06°42'18\"E

STATE OF VIRGINIA
 CITY OF WILLIAMSBURG & COUNTY OF JAMES CITY CIRCUIT COURT.
 THIS 4th DAY OF February, 2006. THE PLAT SHOWN
 HEREON WAS PRESENTED AND ADMITTED TO THE RECORD AS THE
 LAW DIRECTS. @ 10:51AM/PM
 INSTRUMENT # 110003835
 TESTE: Betsy B. Woolridge, Clerk
 By Claudia H. O'Neil, Dep. Clerk

NO.	DATE	REVISION / COMMENT / NOTE	BY



PLAT OF EASEMENTS
 SHOWING PRIVATE DRAINAGE AND
 NATURAL OPEN SPACES
 BEING THE PROPERTY OF
 NEWS COMPANY L.L.C. AND
 SLN CASEY ASSOCIATES, L.L.C.

DESIGNED: AES
 DRAWN: JFS/JDB
 SCALE: 1"=100'
 DATE: 10/5/05
 PROJECT NO: 9069-02
 DRAWING NO: 1 OF 1

JAMES CITY COUNTY
 BERKELEY DISTRICT