

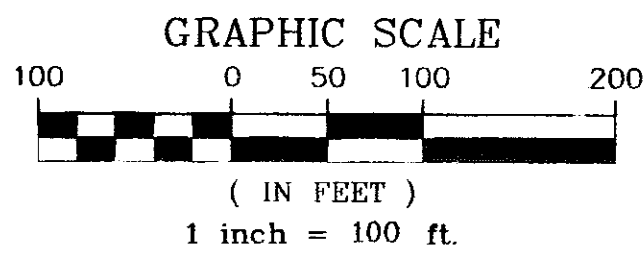
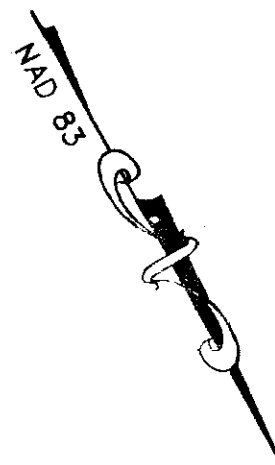
110002456

COMMONWEALTH OF VIRGINIA, COUNTY OF JAMES CITY:
 IN THE CLERK'S OFFICE OF THE CIRCUIT COURT OF THE COUNTY OF
 JAMES CITY, ON THE 24 DAY OF January, 2011 THIS PLAT WAS
 THIS DAY RECEIVED AND UPON CERTIFICATE OF ACKNOWLEDGEMENT,
 ADMITTED TO RECORD AS THE LAW DIRECTS. @ 12:59 PM

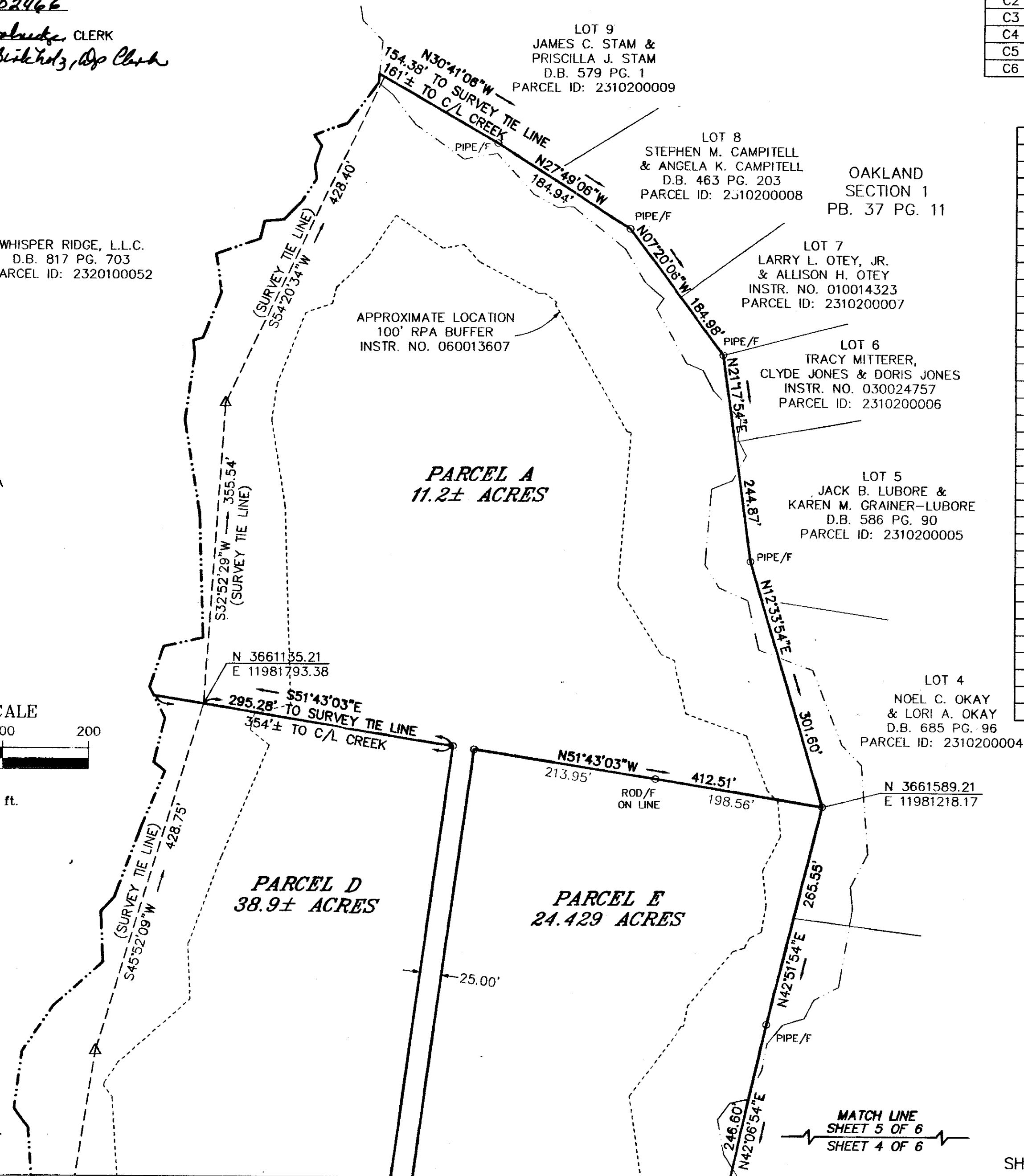
INSTRUMENT NO. 110002456

TESTE: *Butler B. Workidge*, CLERK
 By: *Claudia H. Birkholz, Dep. Clerk*

WHISPER RIDGE, L.L.C.
 D.B. 817 PG. 703
 PARCEL ID: 2320100052



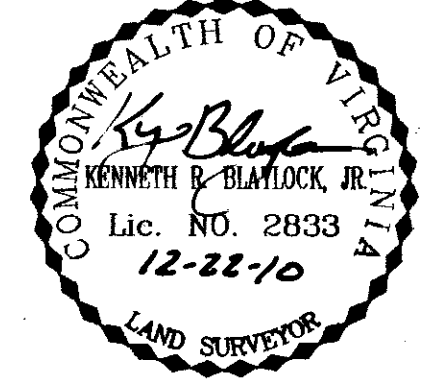
MATCH LINE
 SHEET 5 OF 6
 SHEET 4 OF 6



CURVE TABLE						
CURVE	LENGTH	RADIUS	DELTA	TANGENT	CHORD BEARING	CHORD
C1	67.04'	546.46'	7°01'44"	33.56'	N23°02'14"E	67.00'
C2	301.62'	2824.79'	6°07'04"	150.95'	S63°54'31"E	301.48'
C3	456.95'	2824.79'	9°16'06"	228.98'	S56°12'55"E	456.46'
C4	69.43'	2824.79'	1°24'30"	34.72'	S69°18'52"E	69.43'
C5	79.31'	646.46'	7°01'44"	39.70'	N23°02'14"E	79.26'
C6	11.07'	546.46'	1°09'39"	5.54'	N25°58'17"E	11.07'

LINE TABLE		
LINE	BEARING	LENGTH
L1	S51°17'40"W	42.99'
L2	S69°46'53"E	68.51'
L3	S63°26'54"E	15.85'
L4	N26°33'06"E	8.93'
L5	S63°31'45"E	337.87'
L6	N26°28'15"E	10.00'
L7	S63°31'45"E	20.00'
L8	S26°28'15"W	10.00'
L9	S63°31'45"E	14.03'
L10	S18°29'19"E	29.49'
L11	S26°33'06"W	204.52'
L12	S18°26'54"E	5.85'
L13	S63°26'44"E	80.96'
L14	S40°56'54"E	122.89'
L15	S60°26'54"E	179.38'
L16	S84°56'54"E	11.41'
L17	N48°32'34"E	164.13'
L18	N40°54'59"E	46.27'
L19	N84°42'06"E	22.48'
L20	S51°30'47"E	21.86'
L21	N45°35'14"E	15.88'
L22	S44°24'46"E	8.55'
L23	S48°32'34"W	174.06'
L24	N84°56'54"W	24.35'
L25	N60°26'54"W	187.16'
L26	N40°56'54"W	122.35'
L27	N63°26'44"W	22.88'
L28	S26°33'16"W	91.58'
L29	N61°37'39"W	20.01'
L30	N26°33'16"E	90.94'
L31	N63°26'44"W	42.38'
L32	N18°26'54"W	5.57'
L33	S71°33'06"W	7.09'

LINE TABLE		
LINE	BEARING	LENGTH
L34	N36°16'23"E	20.30'
L35	S63°31'45"E	31.13'
L36	S26°28'15"W	20.00'
L37	N63°31'45"W	34.59'
L38	N26°33'06"E	8.89'
L39	N36°16'23"E	26.65'
L40	N36°16'23"E	3.72'
L41	S70°01'07"E	22.91'
L42	S16°12'11"E	3.50'
L43	S69°46'53"E	10.36'
L44	S26°33'06"W	29.70'
L45	N76°41'53"W	29.82'
L46	N13°18'07"E	20.00'
L47	S76°41'53"E	13.98'
L48	N26°33'06"E	22.14'
L49	N71°33'06"E	18.52'
L50	N26°33'06"E	200.06'
L51	N18°29'19"W	12.91'
L52	N63°31'45"W	363.53'
L53	N61°37'39"W	41.10'
L54	N61°37'39"W	129.02'
L55	N78°48'52"W	325.77'
L56	N03°39'06"W	31.03'
L57	S78°48'52"E	236.73'
L58	N03°39'06"W	61.68'
L59	S61°37'39"E	101.53'
L60	N47°50'20"E	43.36'
L61	N51°30'47"W	20.54'
L62	S84°42'06"W	6.40'
L63	S40°54'59"W	39.57'
L64	S43°20'03"W	112.48'
L65	N46°39'57"W	4.19'
L66	N43°20'03"E	34.37'



6 Large/Small Plat(s) Recorded
 herewith as # 110002456

REVISED: DECEMBER 22, 2010

RESUBDIVISION OF PARCELS A, C, D AND E
 OWNED BY JOHN B. BARNETT, JR. AND
 JUDITH L. BARNETT, KTP DEVELOPMENT, LLC
 AND CANDLE DEVELOPMENT, L.L.C.

POWHATAN DISTRICT * JAMES CITY COUNTY, VIRGINIA
 DATE: NOVEMBER 12, 2010 SCALE: 1" = 100'

JENNINGS STEPHENSON P.C.
 LAND SURVEYORS & PLANNERS
 10160 STAPLES MILL ROAD
 SUITE 103
 GLEN ALLEN, VA 23060
 PHONE - 804-545-6235
 FAX - 804-545-6259
 J.N. 09-516