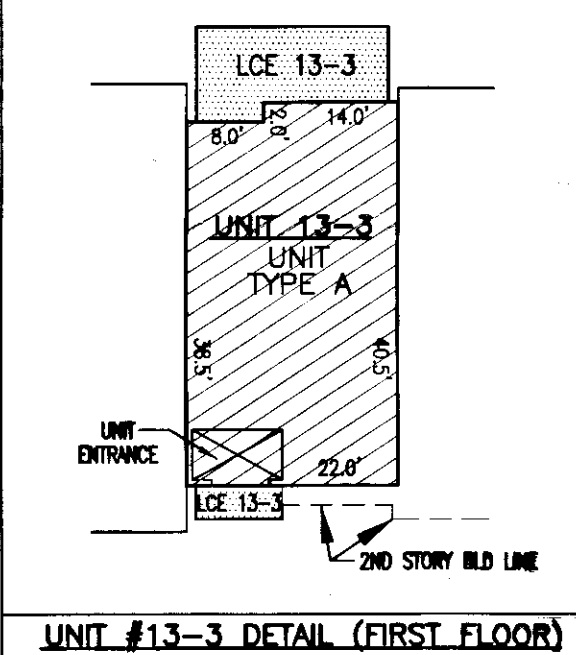
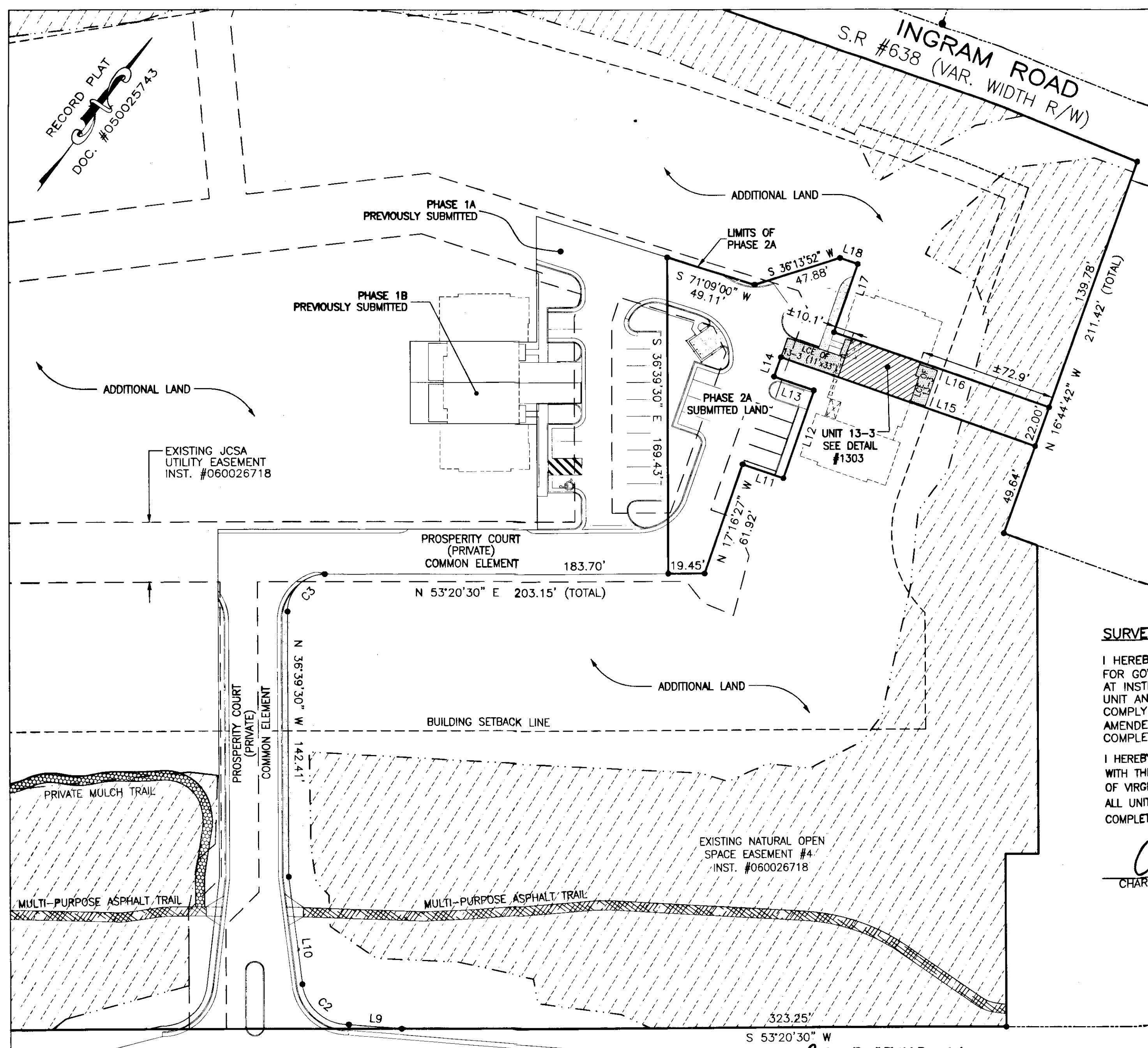
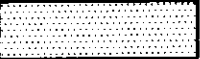
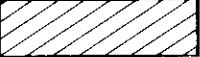
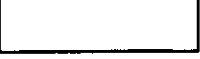


110002055




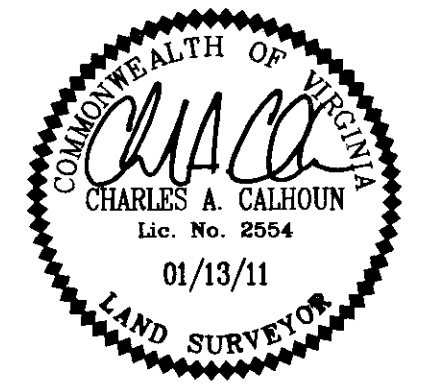
 INDICATES LIMITED COMMON ELEMENT
 INDICATES UNIT AREA
 INDICATES COMMON ELEMENT
 *LCE=LIMITED COMMON ELEMENT

SURVEYORS CERTIFICATE

I HEREBY CERTIFY THAT THE PLAN PREVIOUSLY RECORDED FOR GOVERNOR'S GROVE AT FIVE FORKS, A CONDOMINIUM AT INSTRUMENT 090022560 ACCURATELY DEPICTS THE UNIT AND RELATED IMPROVEMENTS SHOWN AND THAT THEY COMPLY WITH THE CODE OF VIRGINIA OF 1950, AS AMENDED 55-79.58(B) AND ARE SUBSTANTIALLY COMPLETE.

I HEREBY CERTIFY THAT THIS PLAT IS ACCURATE AND COMPLIES WITH THE PROVISIONS OF SECTION 55-79.58 (A) OF THE CODE OF VIRGINIA 1950 AS AMENDED AND I FURTHER CERTIFY THAT ALL UNITS DEPICTED HEREON HAVE BEEN SUBSTANTIALLY COMPLETE.

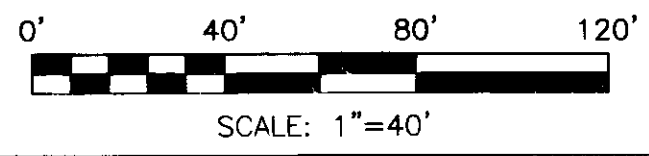

 CHARLES A. CALHOUN LIC.# 2554 01/13/11 DATE



PLAT OF
PHASE 2A
GOVERNOR'S GROVE AT FIVE FORKS
 A CONDOMINIUM
 LOCATED IN THE BERKELEY DISTRICT
 JAMES CITY COUNTY, VIRGINIA

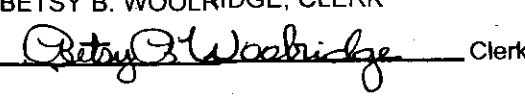
DATE: 01/13/11 SCALE: 1" = 40' JOB# 06-460
SHEET 2 OF 2

JOHN TYLER HIGHWAY
STATE ROUTE #5
 (VARIABLE WIDTH PUBLIC R/W)



UNIT NUMBER	UNIT TYPE	STREET ADDRESS	PARCEL ID#
13-3	A	#1303 PROSPERITY CT	4712101303

2 Large/Small Plat(s) Recorded
herewith as # 110002055

City of Williamsburg & County of James City
 Circuit Court: This PLAT was recorded on
 20 January 2011
 at 12:49 AM/PM, PG
 DOCUMENT # 110002055
 BETSY B. WOOLRIDGE, CLERK
 Clerk

LandTech
Resources, Inc.
 Surveying • Engineering • GPS
 205-E Bulifants Blvd. Williamsburg, VA 23188
 Phone: (757) 565-1677 Fax: (757) 565-0782
 web: landtechresources.com