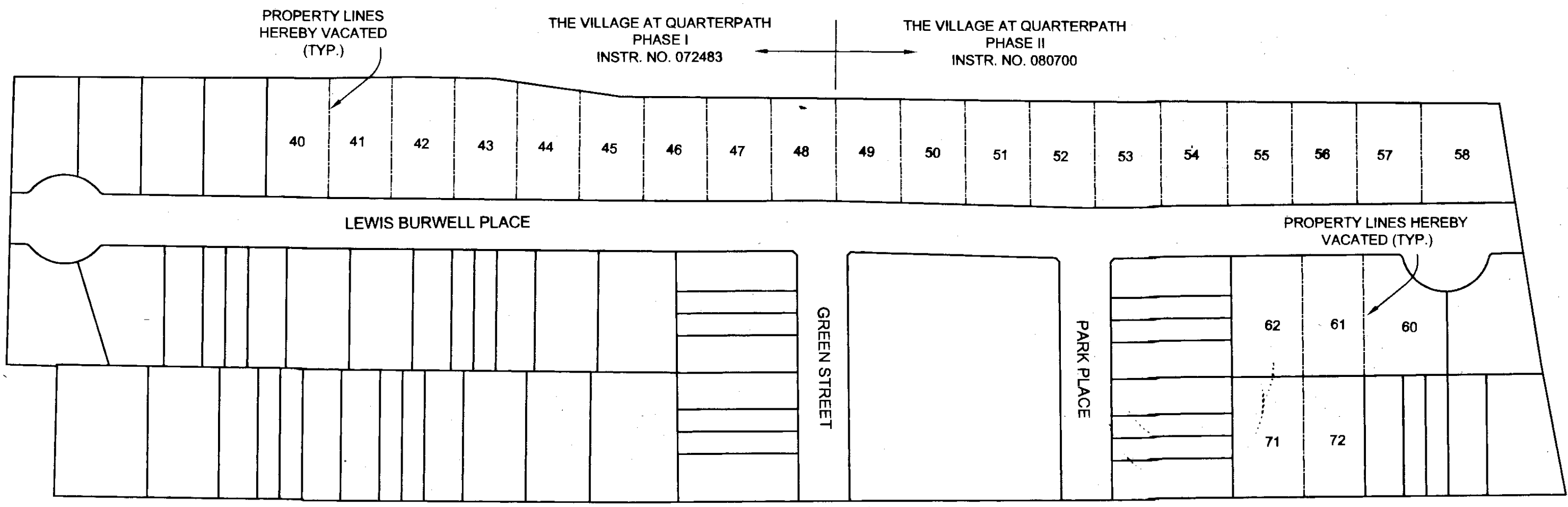
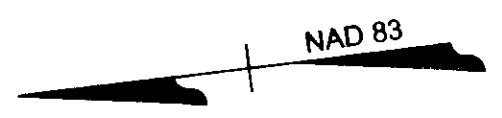


101386



ALL INTERIOR PROPERTY LINES SHOWN AS ARE HEREBY VACATED BY THIS PLAT.

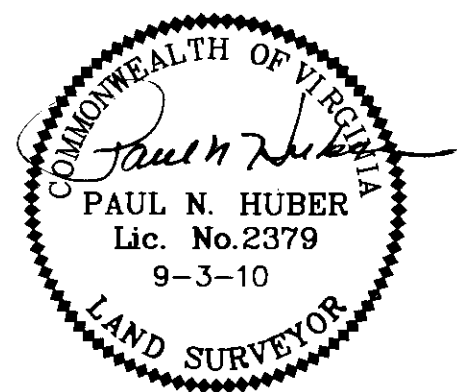
LOT NUMBERS SHOWN ARE PREVIOUS LOT NUMBERS.

**STATE OF VIRGINIA
CITY OF WILLIAMSBURG**

IN THE CLERK'S OFFICE OF THE CIRCUIT COURT FOR THE CITY OF WILLIAMSBURG AND COUNTY OF JAMES CITY, VIRGINIA THIS 19 DAY OF Oct, 2010. THIS MAP WAS PRESENTED AND ADMITTED TO RECORD AS THE LAW DIRECTS AS INSTRUMENT NUMBER 101386 AT 10:10AM

DESY B. WOOLRIDGE, CLERK

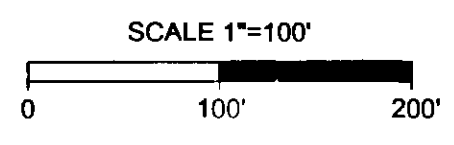
TESTE



**THE VILLAGE AT QUARTERPATH
PHASE III**
A RESUBDIVISION OF PHASES I AND II

REV.: 9-3-10 (CO. COMMENTS)
REV.: 8-13-10 (CO. COMMENTS)

CITY OF WILLIAMSBURG, VIRGINIA	
DATE: JUNE 28, 2010	SCALE: 1"=100'
SHEET: 7 OF 7	J.N.: 27977
DRAWN BY: M.S.F.	CHECK BY: M.C.S.



7 Large/Small Plat(s) Recorded herewith as # 101386

Y:\90\127977 Quarterpath civil 3d-1\dwg\CAD-27977V-xpsurv1.dwg | Plotted on 9/22/2010 11:13 AM | by Marilyn Farmer

THIS DRAWING PREPARED AT THE
 CORPORATE OFFICE
 1001 Boulder Parkway, Suite 300 | Richmond, VA 23223
 TEL 804-306-5500 FAX 804-960-1915 www.timmons.com
 YOUR VISION ACHIEVED THROUGH OURS.
 Site Development | Residential | Infrastructure | Technology

TIMMONS GROUP