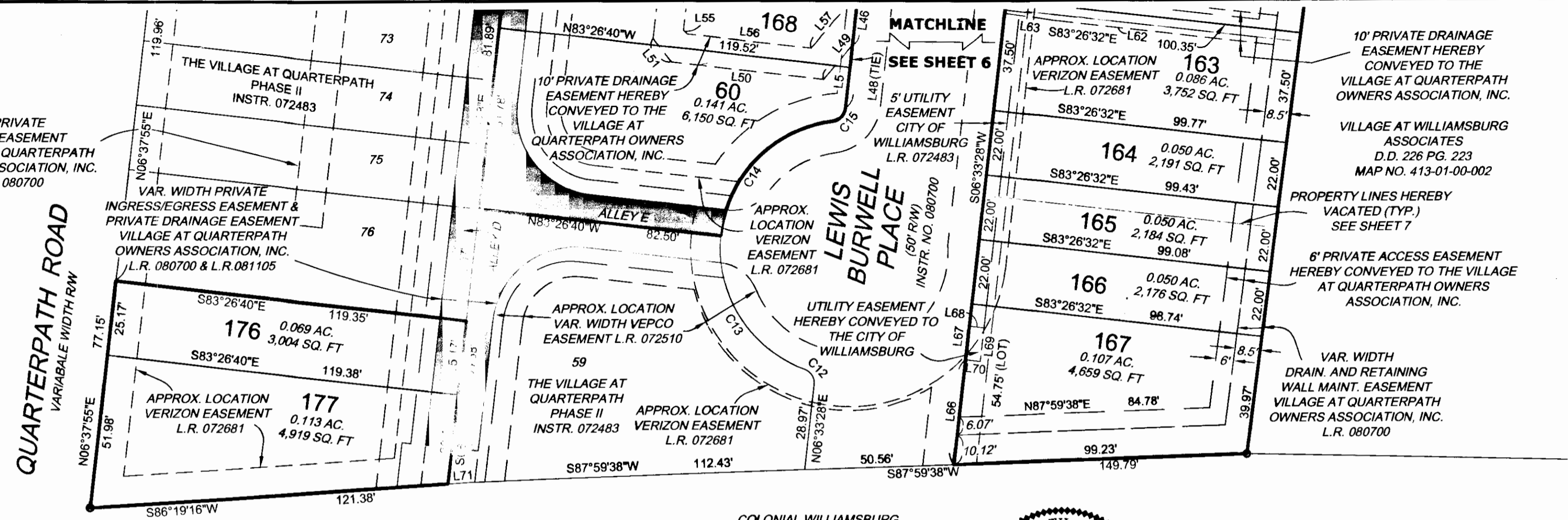


101386

THIS DRAWING PREPARED AT THE  
CORPORATE OFFICE  
1001 Boulliers Parkway, Suite 300 | Richmond, VA 23225  
TEL: 804.200.6900 FAX: 804.560.1016 www.timmons.com

YOUR VISION ACHIEVED THROUGH OURS.

Site Development Residential Infrastructure Technology



Y:\901127977 Quarterpath civil 3d-1\dwg\ACAD-27977V-xpsurv1.dwg | Plotted on 9/22/2010 1:58 PM | by Marilyn Farmer

COLONIAL WILLIAMSBURG  
FOUNDATION  
L.R. 042128  
MAP NO. 529-07-00-03



LINE TABLE			LINE TABLE			LINE TABLE		
LINE	BEARING	DISTANCE	LINE	BEARING	DISTANCE	LINE	BEARING	DISTANCE
L1	N81°37'12"W	1.47'	L35	N06°33'20"E	8.59'	L69	S06°33'28"W	11.43'
L2	N08°29'03"E	13.26'	L36	S83°26'40"E	50.19'	L70	N83°26'32"W	5.00'
L3	S07°43'45"W	14.96'	L37	S06°33'20"W	8.59'	L71	S86°19'16"W	8.48'
L4	N07°43'16"E	15.69'	L38	---	---	L72	S30°35'42"W	14.93'
L5	S06°34'35"W	13.97'	L39	S57°40'36"E	22.49'	L73	S83°26'40"E	8.50'
L6	N07°35'33"E	8.29'	L40	N07°29'16"E	3.13'	L74	S07°26'54"W	3.63'
L7	S82°30'15"E	50.00'	L41	S81°39'55"E	62.60'			
L8	S07°24'53"W	8.34'	L42	S08°20'05"W	10.00'			
L9	N82°26'40"W	14.00'	L43	N81°39'55"W	64.73'			
L10	N07°43'07"E	17.38'	L44	N57°40'36"W	19.99'			
L11	N82°16'53"W	8.26'	L45	N07°43'07"E	18.66'			
L12	N07°43'07"E	5.00'	L46	S06°33'28"W	18.14'			
L13	S82°16'53"E	8.26'	L47	---	---			
L14	N07°43'07"E	5.00'	L48	S06°33'04"W	7.69'			
L15	N10°37'26"E	62.08'	L49	S40°00'16"W	15.21'			
L16	S10°37'26"W	63.04'	L50	N83°26'40"W	51.78'			
L17	N07°43'07"E	22.82'	L51	N38°26'40"W	10.18'			
L18	N52°43'07"E	11.21'	L52	N06°33'20"E	115.04'			
L19	S82°16'53"E	59.61'	L53	N83°26'40"W	10.00'			
L20	N20°23'57"E	18.23'	L54	S06°33'20"W	110.90'			
L21	N09°27'39"E	70.40'	L55	N38°26'40"W	1.90'			
L22	S80°32'21"E	10.00'	L56	N83°26'40"W	42.26'			
L23	S09°27'39"W	70.50'	L57	N40°00'16"E	24.96'			
L24	S20°23'57"W	48.02'	L58	---	---			
L25	N69°03'49"W	10.00'	L59	---	---			
L26	N20°23'57"E	18.59'	L60	S83°26'32"E	74.90'			
L27	N82°16'53"W	53.22'	L61	S07°26'54"W	10.00'			
L28	S52°43'07"W	2.93'	L62	N83°26'32"W	75.02'			
L29	S07°43'07"W	21.59'	L63	N80°16'38"W	16.77'			
L30	S40°07'52"W	27.24'	L64	N06°33'28"E	5.94'			
L31	N40°07'52"E	8.59'	L65	S80°16'38"E	17.05'			
L32	N07°43'07"E	2.50'	L66	N06°33'28"E	35.79'			
L33	N83°26'40"W	10.80'	L67	N06°33'28"E	11.43'			
L34	N83°26'40"W	50.19'	L68	S83°26'32"E	5.00'			

CURVE TABLE						
CURVE	RADIUS	LENGTH	TANGENT	DELTA	CHORD BEARING	CHORD
C1	5.00'	4.52'	2.43'	51°47'43"	S18°10'07"E	4.37'
C2	43.50'	78.64'	55.26'	103°34'49"	S07°43'26"W	68.36'
C3	5.00'	4.52'	2.43'	51°47'43"	S33°36'58"W	4.37'
C4	43.50'	22.78'	11.66'	30°00'39"	N29°03'39"W	22.53'
C5	43.50'	29.08'	15.11'	38°18'26"	N05°05'53"E	28.54'
C6	43.50'	26.77'	13.83'	35°15'44"	N41°52'58"E	26.35'
C7	43.50'	26.15'	13.48'	34°26'46"	N26°52'28"W	25.76'
C8	43.50'	26.29'	13.56'	34°37'49"	S07°39'50"W	25.89'
C9	43.50'	26.22'	13.52'	34°32'15"	S42°14'52"W	25.83'
C10	5.00'	4.52'	2.43'	51°47'43"	N33°37'08"E	4.37'
C11	5.00'	4.52'	2.42'	51°44'44"	N18°13'29"W	4.36'
C12	5.00'	6.66'	3.93'	76°19'05"	N31°36'04"W	6.18'
C13	43.50'	57.25'	33.63'	75°24'38"	N32°03'17"W	53.21'
C14	43.50'	58.63'	34.74'	77°13'32"	N44°15'47"E	54.29'
C15	5.00'	6.66'	3.93'	76°18'50"	N44°42'58"E	6.18'
C16	26.00'	7.84'	3.95'	17°16'01"	S73°48'39"E	7.81'
C17	28.00'	19.22'	10.00'	39°19'19"	N76°53'41"E	18.84'
C18	43.50'	78.67'	55.29'	103°36'50"	N07°42'35"E	68.38'

**STATE OF VIRGINIA  
CITY OF WILLIAMSBURG**

IN THE CLERK'S OFFICE OF THE CIRCUIT COURT FOR THE CITY OF WILLIAMSBURG AND COUNTY OF JAMES CITY, VIRGINIA THIS 19 DAY OF Oct., 2010. THIS MAP WAS PRESENTED AND ADMITTED TO RECORD AS THE LAW DIRECTS AS INSTRUMENT NUMBER 101386 at 10:10 AM

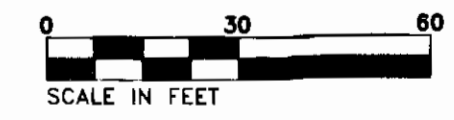
TESTE BETSY B. WOOLRIDGE, CLERK

BY Dutchess DiSilippo Dep.

7 Large/Small Plat(s) Recorded herewith as # 101386

**THE VILLAGE AT QUARTERPATH  
PHASE III  
A RESUBDIVISION OF PHASES I AND II**

REV.: 9-3-10 (CO. COMMENTS)	
REV.: 8-13-10 (CO. COMMENTS)	
CITY OF WILLIAMSBURG, VIRGINIA	
DATE: JUNE 28, 2010	SCALE: 1"=30'
SHEET: 6 OF 7	J.N.: 27977
DRAWN BY: M.S.F.	CHECK BY: M.C.S.



**TIMMONS GROUP**