

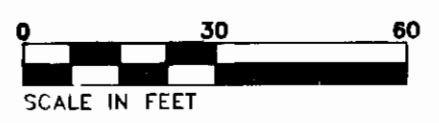
101386

Y:\901127977 Quarterpath civil 3d-1.dwg\ACAD-27977V-xpsunv1.dwg | Plotted on 9/22/2010 1:15 PM | by Marilyn Farmer



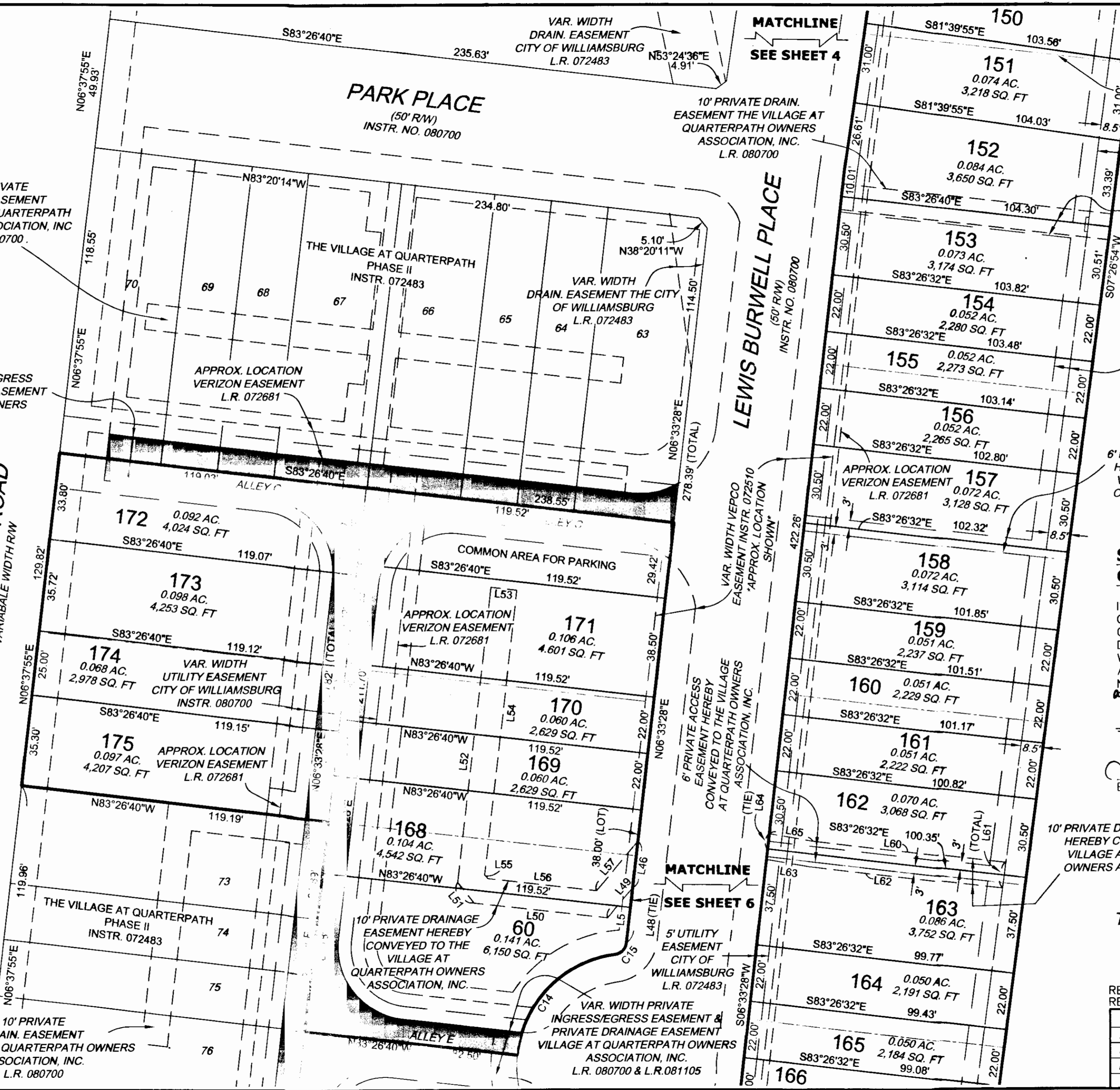
VAR. WIDTH PRIVATE INGRESS/EGRESS EASEMENT & PRIVATE DRAINAGE EASEMENT VILLAGE AT QUARTERPATH OWNERS ASSOCIATION, INC. L.R. 080700 & L.R.081105

10' PRIVATE DRAIN. EASEMENT VILLAGE AT QUARTERPATH OWNERS ASSOCIATION, INC L.R. 080700.



QUARTERPATH ROAD
VARIABLE WIDTH R/W

10' PRIVATE DRAIN. EASEMENT VILLAGE AT QUARTERPATH OWNERS ASSOCIATION, INC. L.R. 080700



MATCHLINE
SEE SHEET 4

10' PRIVATE DRAIN. EASEMENT THE VILLAGE AT QUARTERPATH OWNERS ASSOCIATION, INC. L.R. 080700

LEWIS BURWELL PLACE
(50' R/W)
INSTR. NO. 080700

VAR. WIDTH VEPCO EASEMENT INSTR. 072510 'APPROX. LOCATION SHOWN'

6' PRIVATE ACCESS EASEMENT HEREBY CONVEYED TO THE VILLAGE AT QUARTERPATH OWNERS ASSOCIATION, INC.

MATCHLINE
SEE SHEET 6

VAR. WIDTH PRIVATE INGRESS/EGRESS EASEMENT & PRIVATE DRAINAGE EASEMENT VILLAGE AT QUARTERPATH OWNERS ASSOCIATION, INC. L.R. 080700 & L.R.081105

PROPERTY LINES HEREBY VACATED (TYP.) SEE SHEET 7

VAR. WIDTH DRAIN. AND RETAINING WALL MAINT. EASEMENT VILLAGE AT QUARTERPATH OWNERS ASSOCIATION, INC. L.R. 080700

6' PRIVATE ACCESS EASEMENT HEREBY CONVEYED TO THE VILLAGE AT QUARTERPATH OWNERS ASSOCIATION, INC.

VILLAGE AT WILLIAMSBURG ASSOCIATES D.D. 226 PG. 223 MAP NO. 413-01-00-002

6' PRIVATE ACCESS EASEMENT HEREBY CONVEYED TO THE VILLAGE AT QUARTERPATH OWNERS ASSOCIATION, INC.

6' PRIVATE ACCESS EASEMENT HEREBY CONVEYED TO THE VILLAGE AT QUARTERPATH OWNERS ASSOCIATION, INC.

**STATE OF VIRGINIA
CITY OF WILLIAMSBURG**

IN THE CLERK'S OFFICE OF THE CIRCUIT COURT FOR THE CITY OF WILLIAMSBURG AND COUNTY OF JAMES CITY, VIRGINIA THIS 19 DAY OF Oct., 2010. THIS MAP WAS PRESENTED AND ADMITTED TO RECORD AS THE LAW DIRECTS AS INSTRUMENT NUMBER 101386 at 10:10 AM

BETSY B. WCOLRIDGE, CLERK

TESTE

Walter D. Shipp Dep.

10' PRIVATE DRAINAGE EASEMENT HEREBY CONVEYED TO THE VILLAGE AT QUARTERPATH OWNERS ASSOCIATION, INC.

1 Large/Small Plat(s) Recorded herewith as # 101386

**THE VILLAGE AT QUARTERPATH
PHASE III
A RESUBDIVISION OF PHASES I AND II**

REV.: 9-3-10 (CO. COMMENTS)
REV.: 8-13-10 (CO. COMMENTS)

CITY OF WILLIAMSBURG, VIRGINIA	
DATE: JUNE 28, 2010	SCALE: 1"=30'
SHEET: 5 OF 7	J.N.: 27977
DRAWN BY: M.S.F.	CHECK BY: M.C.S.

TIMMONS GROUP
 Infrastructure Technology
 Site Development Residential
 YOUR VISION ACHIEVED THROUGH OURS.
 THIS DRAWING PREPARED AT THE CORPORATE OFFICE
 1001 Boulders Parkway, Suite 300 | Richmond, VA 23225
 TEL: 804.230.6500 FAX: 804.350.1016 www.timmons.com