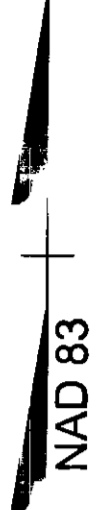


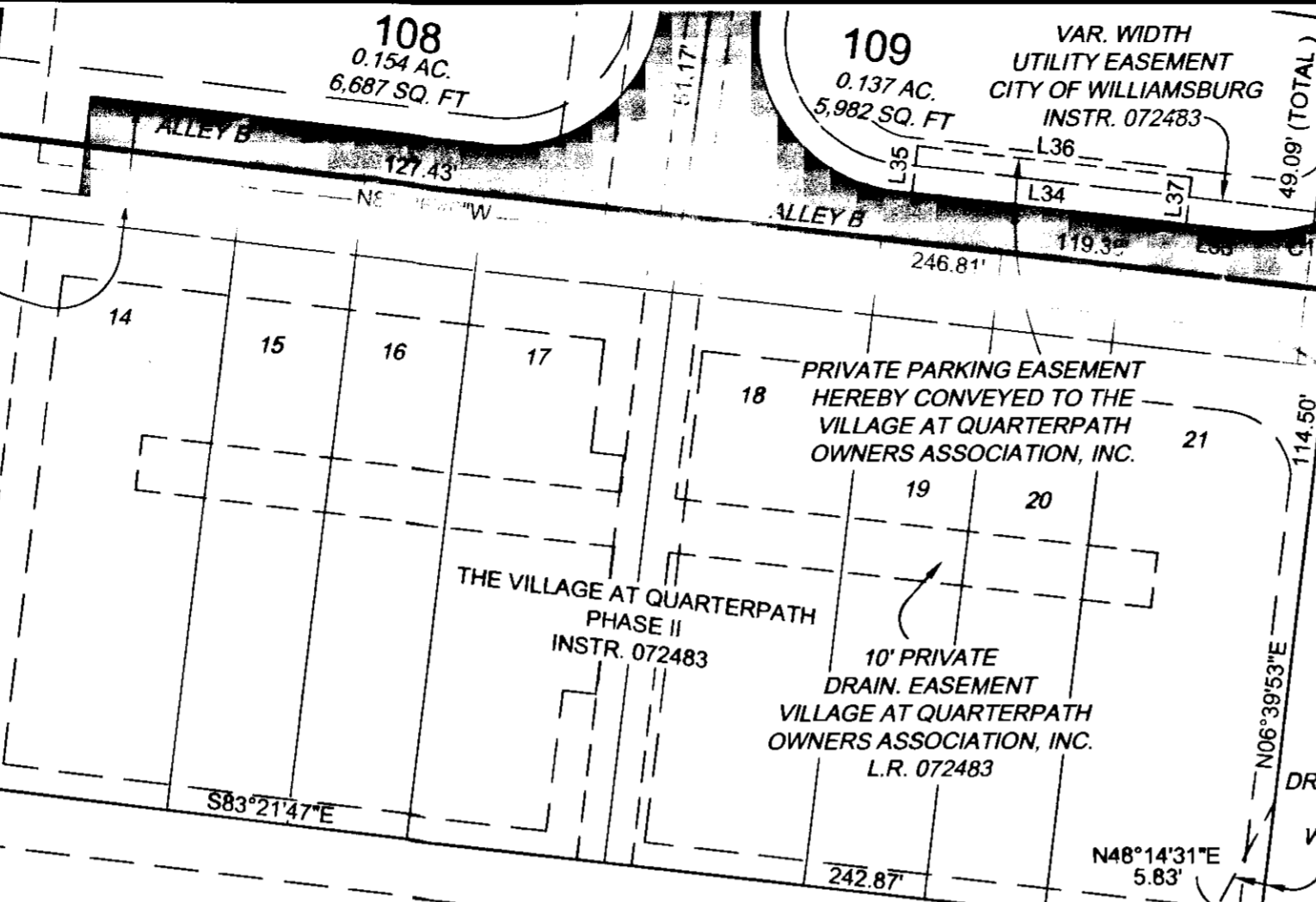
101386

Y:\901127977 Quarterpath civil 3d-1\dwg\ACAD-27977V-xpsurv1.dwg | Plotted on 9/22/2010 1:16 PM | by Marilyn Farmer

VAR. WIDTH PRIVATE INGRESS/EGRESS EASEMENT & PRIVATE DRAINAGE EASEMENT VILLAGE AT QUARTERPATH OWNERS ASSOCIATION, INC. L.R. 072483 & L.R.072487



QUARTERPATH ROAD  
VARIABLE WIDTH RW  
N06°37'55"E  
49.99'



MATCHLINE  
SEE SHEET 3

CONC. MONUMENT FOUND

APPROX. LOC. VAR. WIDTH UTILITY EASEMENT CP WILLIAMSBURG, LLC L.R. 092112

8' PRIVATE ACCESS EASEMENT HEREBY CONVEYED TO THE VILLAGE AT QUARTERPATH OWNERS ASSOCIATION, INC.

6' PRIVATE ACCESS EASEMENT HEREBY CONVEYED TO THE VILLAGE AT QUARTERPATH OWNERS ASSOCIATION, INC.

VILLAGE AT WILLIAMSBURG ASSOCIATES D.D. 226 PG. 223 MAP NO. 413-01-00-002

VAR. WIDTH PRIVATE ACCESS EASEMENT HEREBY CONVEYED TO THE VILLAGE AT QUARTERPATH OWNERS ASSOCIATION, INC.

VAR. WIDTH PRIVATE DRAIN. AND RETAINING WALL MAINT. EASEMENT VILLAGE AT QUARTERPATH OWNERS ASSOCIATION, INC. L.R. 080700

6' PRIVATE ACCESS EASEMENT HEREBY CONVEYED TO THE VILLAGE AT QUARTERPATH OWNERS ASSOCIATION, INC.

THE VILLAGE AT QUARTERPATH PHASE III  
A RESUBDIVISION OF PHASES I AND II

REV.: 9-3-10 (CO. COMMENTS)  
REV.: 8-13-10 (CO. COMMENTS)

CITY OF WILLIAMSBURG, VIRGINIA	
DATE: JUNE 28, 2010	SCALE: 1"=30'
SHEET: 4 OF 7	J.N.: 27977
DRAWN BY: M.S.F.	CHECK BY: M.C.S.

GREEN STREET  
(50' RW)

APPROX. LOCATION VERIZON EASEMENT L.R. 072681

6' PRIVATE ACCESS EASEMENT HEREBY CONVEYED TO THE VILLAGE AT QUARTERPATH OWNERS ASSOCIATION, INC.

10' PRIVATE DRAINAGE EASEMENT HEREBY CONVEYED TO THE VILLAGE AT QUARTERPATH OWNERS ASSOCIATION, INC.

APPROX. LOCATION VAR. WIDTH VEPCO EASEMENT L.R. 072510

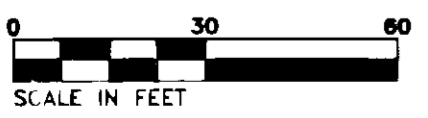
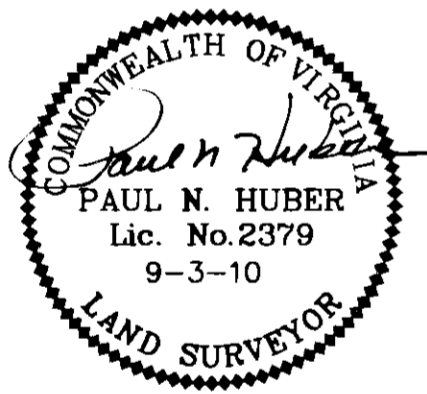
VILLAGE GREEN  
L & B QUARTERPATH LLC  
L.R. 061281-5  
MAP NO. 529-08-01-0S

7 Large/Small Plat(s) Recorded herewith as # 101386  
20' DRAIN. EASEMENT CITY OF WILLIAMSBURG INSTR. 072483

STATE OF VIRGINIA  
CITY OF WILLIAMSBURG

IN THE CLERK'S OFFICE OF THE CIRCUIT COURT FOR THE CITY OF WILLIAMSBURG AND COUNTY OF JAMES CITY, VIRGINIA THIS DAY OF Oct., 2010. THIS MAP WAS PRESENTED AND ADMITTED TO RECORD AS THE LAW DIRECTS AS INSTRUMENT NUMBER 101386 at 10:10AM  
CETSY B. WOOLRIDGE, CLERK

TESTE  
*Fletcher DiLippa Dep.*



THIS DRAWING PREPARED AT THE CORPORATE OFFICE  
1001 Boulders Parkway, Suite 300 | Richmond, VA 23225  
TEL 804.200.6500 FAX 804.360.1015 www.timmons.com

YOUR VISION ACHIEVED THROUGH OURS.  
Site Development Residential Infrastructure Technology  
**TIMMONS GROUP**