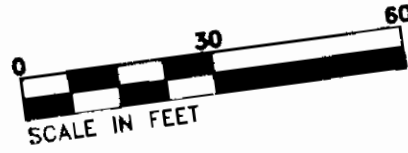


01127977 Quarterpath civil 3d-1.dwg\ACAD-2797TV-xpsuiv1.dwg | Plotted on 9/22/2010 3:18 PM | by Marlyn Farmer



NAD 83

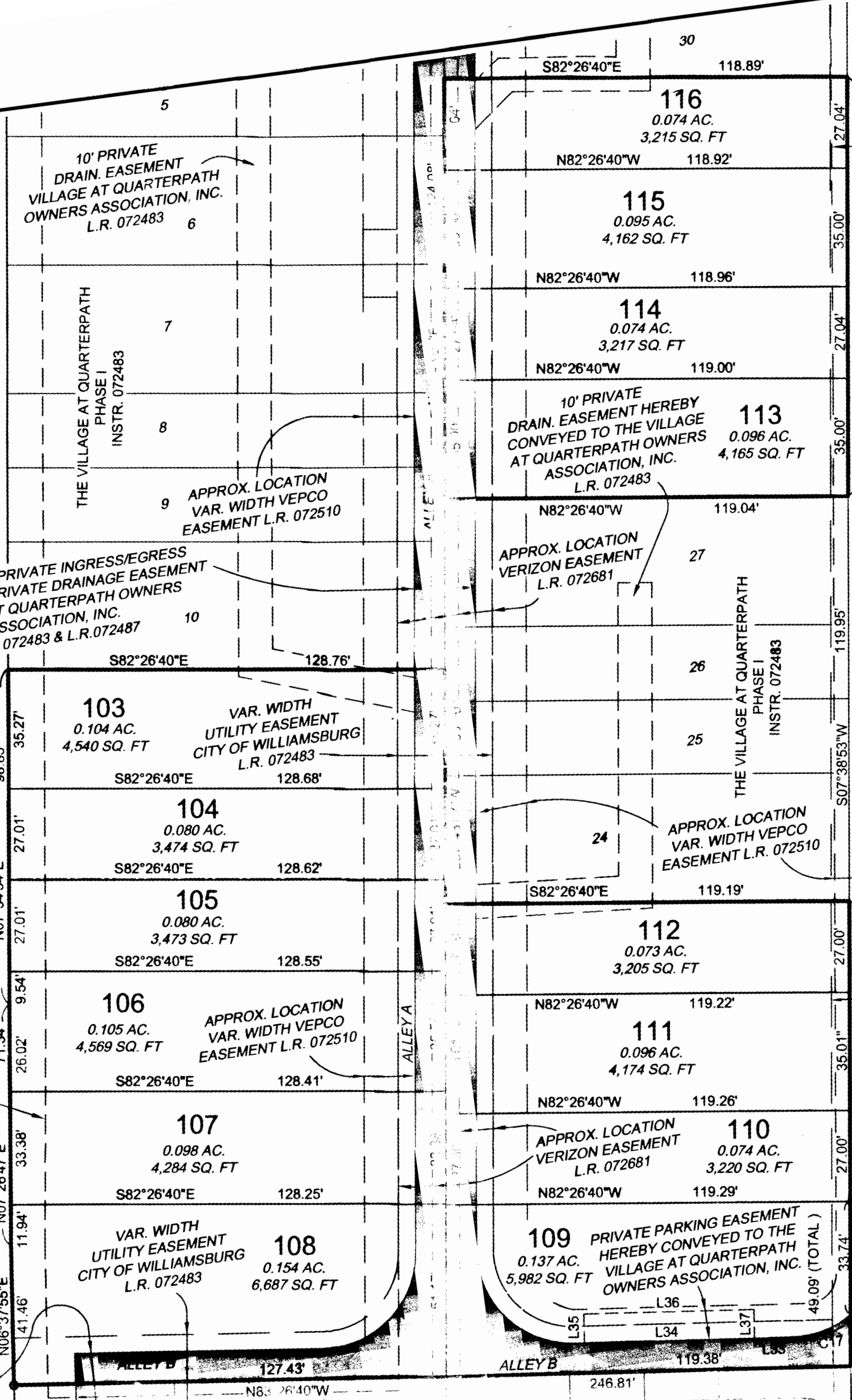
QUARTERPATH ROAD  
VARIABLE WIDTH R/W

10' PRIVATE DRAIN. EASEMENT VILLAGE AT QUARTERPATH OWNERS ASSOCIATION, INC. L.R. 072483 6

VAR. WIDTH PRIVATE INGRESS/EGRESS EASEMENT & PRIVATE DRAINAGE EASEMENT VILLAGE AT QUARTERPATH OWNERS ASSOCIATION, INC. L.R. 072483 & L.R. 072487 10

APPROX. LOCATION VERIZON EASEMENT L.R. 072681

VAR. WIDTH PRIVATE INGRESS/EGRESS EASEMENT & PRIVATE DRAINAGE EASEMENT VILLAGE AT QUARTERPATH OWNERS ASSOCIATION, INC. L.R. 072483 & L.R. 072487



MATCHLINE  
SEE SHEET 2

APPROX. LOCATION VAR. WIDTH VEPCO EASEMENT L.R. 072510

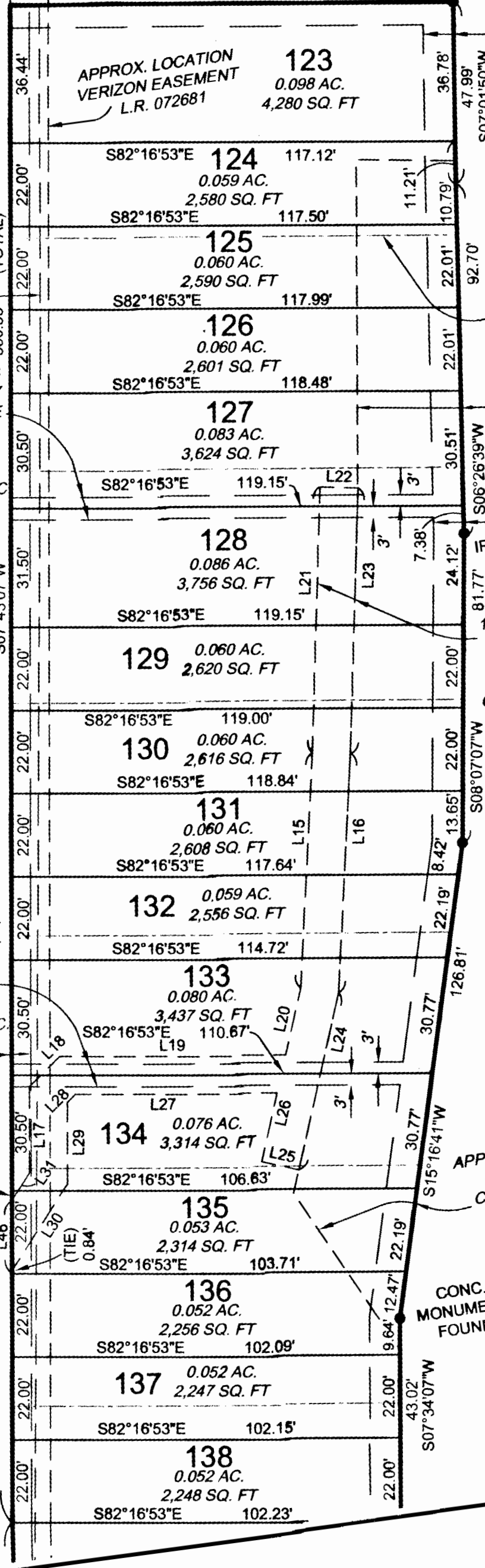
6' PRIVATE ACCESS EASEMENT HEREBY CONVEYED TO THE VILLAGE AT QUARTERPATH OWNERS ASSOCIATION, INC.

LEWIS BURWELL PLACE  
(50' R/W)  
INSTR. NO. 080700

6' PRIVATE ACCESS EASEMENT HEREBY CONVEYED TO THE VILLAGE AT QUARTERPATH OWNERS ASSOCIATION, INC.

5' UTILITY EASEMENT CITY OF WILLIAMSBURG INSTR. 072483

MATCHLINE  
SEE SHEET 4



MATCHLINE  
SEE SHEET 2

APPROX. LOCATION VAR. WIDTH VEPCO EASEMENT L.R. 072510

6' PRIVATE ACCESS EASEMENT HEREBY CONVEYED TO THE VILLAGE AT QUARTERPATH OWNERS ASSOCIATION, INC.

LEWIS BURWELL PLACE  
(50' R/W)  
INSTR. NO. 080700

6' PRIVATE ACCESS EASEMENT HEREBY CONVEYED TO THE VILLAGE AT QUARTERPATH OWNERS ASSOCIATION, INC.

5' UTILITY EASEMENT CITY OF WILLIAMSBURG INSTR. 072483

MATCHLINE  
SEE SHEET 4

8' PRIVATE ACCESS EASEMENT HEREBY CONVEYED TO THE VILLAGE AT QUARTERPATH OWNERS ASSOCIATION, INC.

VILLAGE AT WILLIAMSBURG ASSOCIATES D.D. 226 PG. 223 MAP NO. 413-01-00-002

PROPERTY LINES HEREBY VACATED (TYP.) SEE SHEET 7

APPROX. LOC. VAR. WIDTH UTILITY EASEMENT CP WILLIAMSBURG, LLC L.R. 092112

8' PRIVATE ACCESS EASEMENT HEREBY CONVEYED TO THE VILLAGE AT QUARTERPATH OWNERS ASSOCIATION, INC.

10' PRIVATE DRAINAGE EASEMENT HEREBY CONVEYED TO THE VILLAGE AT QUARTERPATH OWNERS ASSOCIATION, INC.

STATE OF VIRGINIA  
CITY OF WILLIAMSBURG

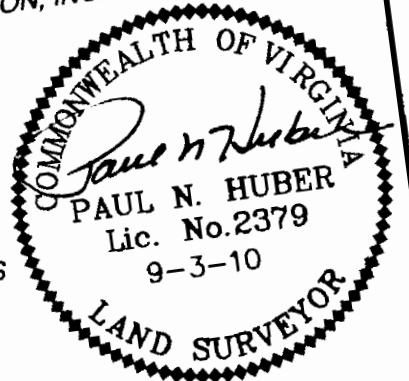
IN THE CLERK'S OFFICE OF THE CIRCUIT COURT FOR THE CITY OF WILLIAMSBURG AND COUNTY OF JAMES CITY, VIRGINIA THIS 19 DAY OF Oct, 2010, THIS MAP WAS PRESENTED AND ADMITTED TO RECORD AS THE LAW DIRECTS AS INSTRUMENT NUMBER 101386 AT 10:10 AM

TESTE  
*Stetson Dillinger Dep.*

APPROX. LOC. VAR. WIDTH UTILITY EASEMENT CP WILLIAMSBURG, LLC L.R. 092112

THE VILLAGE AT QUARTERPATH PHASE III  
A RESUBDIVISION OF PHASES I AND II

REV.: 9-3-10 (CO. COMMENTS)	SCALE: 1"=30'
REV.: 8-13-10 (CO. COMMENTS)	J.N.: 27977
DATE: JUNE 28, 2010	CHECK BY: M.C.S.
SHEET: 3 OF 7	
DRAWN BY: M.S.F.	



THIS DRAWING PREPARED AT THE CORPORATE OFFICE  
10000...  
E. 84-200-6500

Infrastructure Residential Site Development

TIMMONS GROUP