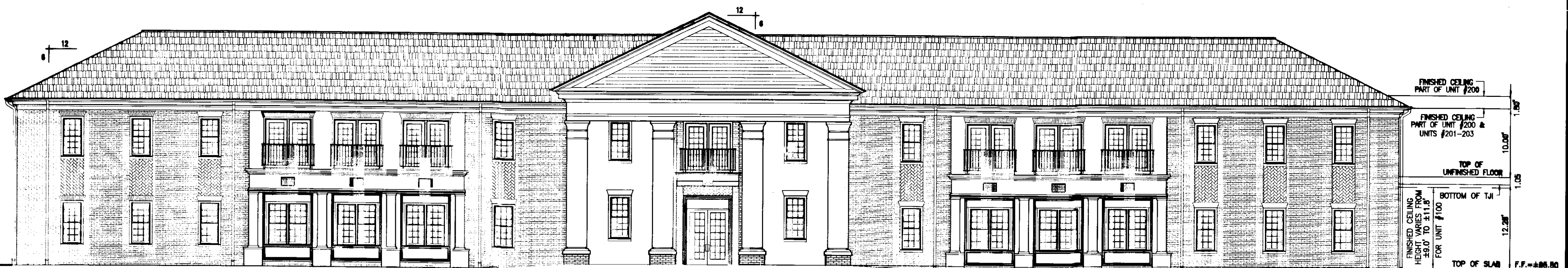
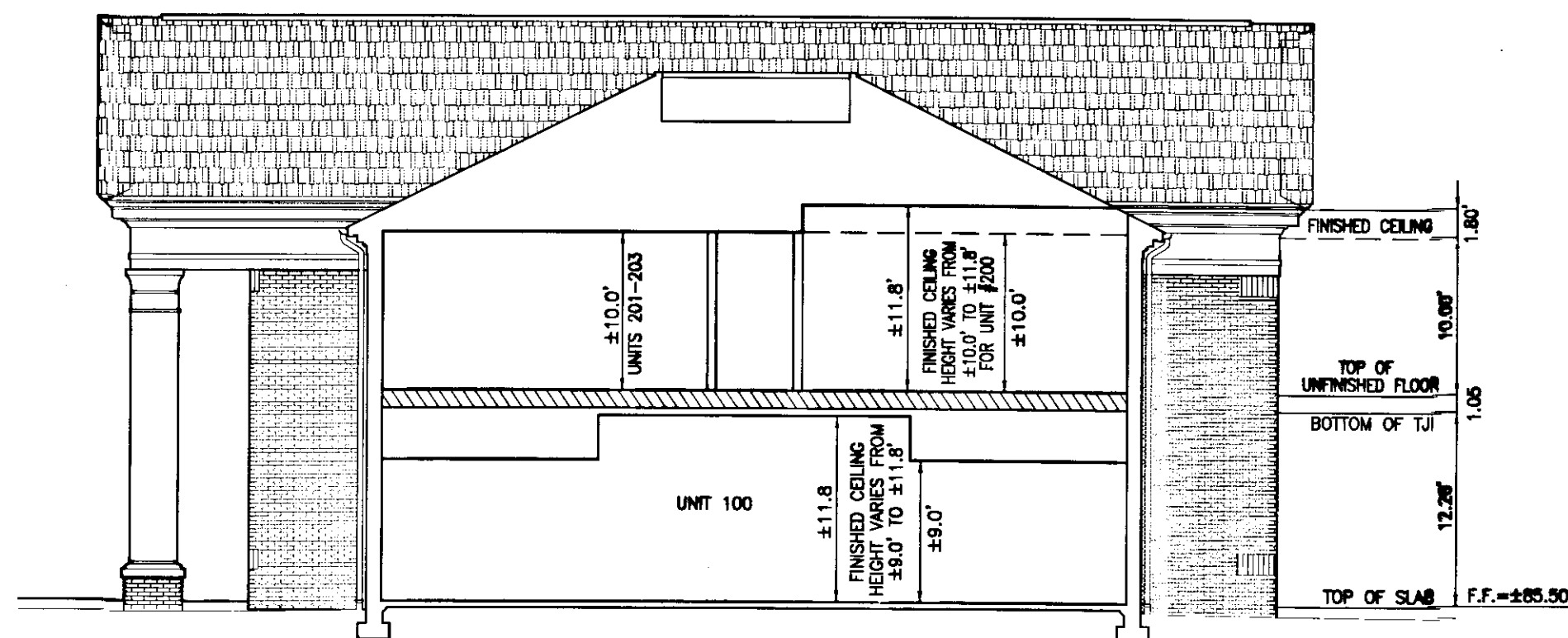


100028271



FRONT ELEVATION  
SCALE: 1"=10'



BUILDING SECTION  
SCALE: 1"=10'



**SURVEYORS CERTIFICATE**

I HEREBY CERTIFY THAT TO THE BEST OF MY KNOWLEDGE OR BELIEF, THIS PLAT IS ACCURATE AND COMPLIES WITH THE PROVISIONS OF SECTION 55-79.58 (B) OF THE CODE OF VIRGINIA 1950 AS AMENDED AND THAT ALL UNITS DEPICTED HEREON HAVE BEEN SUBSTANTIALLY COMPLETED.

*ChA.Ch*  
STATE CERTIFIED LAND SURVEYOR

8-6-2010  
DATE

**NOTE:**

**A. Unit Boundaries.** A Unit consists of a portion of the Condominium designed and intended for individual ownership and use. The boundary of the individual units are as set out in the Declaration of Condominium attached to this plat and recorded contemporaneously in the Circuit Court of the County of James City.

**B. Air Conditioning/Heating/Mechanical.** The air conditioning, refrigerating, ventilation and heating equipment and water, sewer utility and electrical lines within the Unit, and the air conditioning, refrigerating, ventilation and heating equipment, water, sewer, utility and electrical lines, and other apparatus in connection therewith, which serve one Unit, wherever located, shall be owned by the Unit Owner as part of the Unit and are not part of Common Elements.

**C.** The horizontal plane of the exterior surface of the ceiling of a Unit, and all materials constituting all or any part of the ceiling shall be considered a part of the Unit.

3 Large/Small Plat(s) Recorded herewith as # 100028271

City of Williamsburg & County of James City  
Circuit Court: This PLAT was recorded on  
*28 December 2010*  
at *3:47* AM/PM, PB \_\_\_\_\_ PG \_\_\_\_\_  
DOCUMENT # *100028271*  
BETSY B. WOOLRIDGE, CLERK  
*Betsy B. Woolridge* Clerk

PLANS OF  
428 McLAWS  
McLAW'S PROFESSIONAL CENTER, A CONDOMINIUM  
ROBERTS DISTRICT, JAMES CITY COUNTY, VIRGINIA

DATE: 08/06/10 SCALE: 1" = 10' JOB# 07-340  
SHEET 3 OF 3

**LandTech Resources, Inc.**  
Surveying • Engineering • GPS  
205-E-Bulifante Blvd., Williamsburg, VA 23188  
Phone: (757) 565-1677 Fax: (757) 565-0782  
web: landtechresources.com