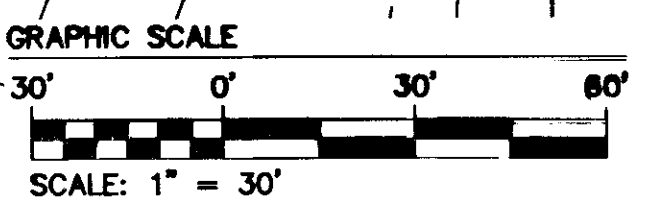
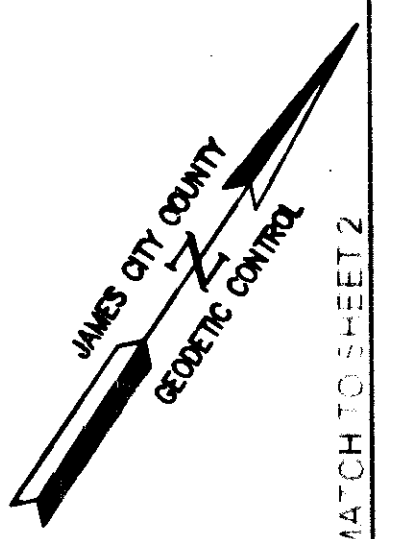
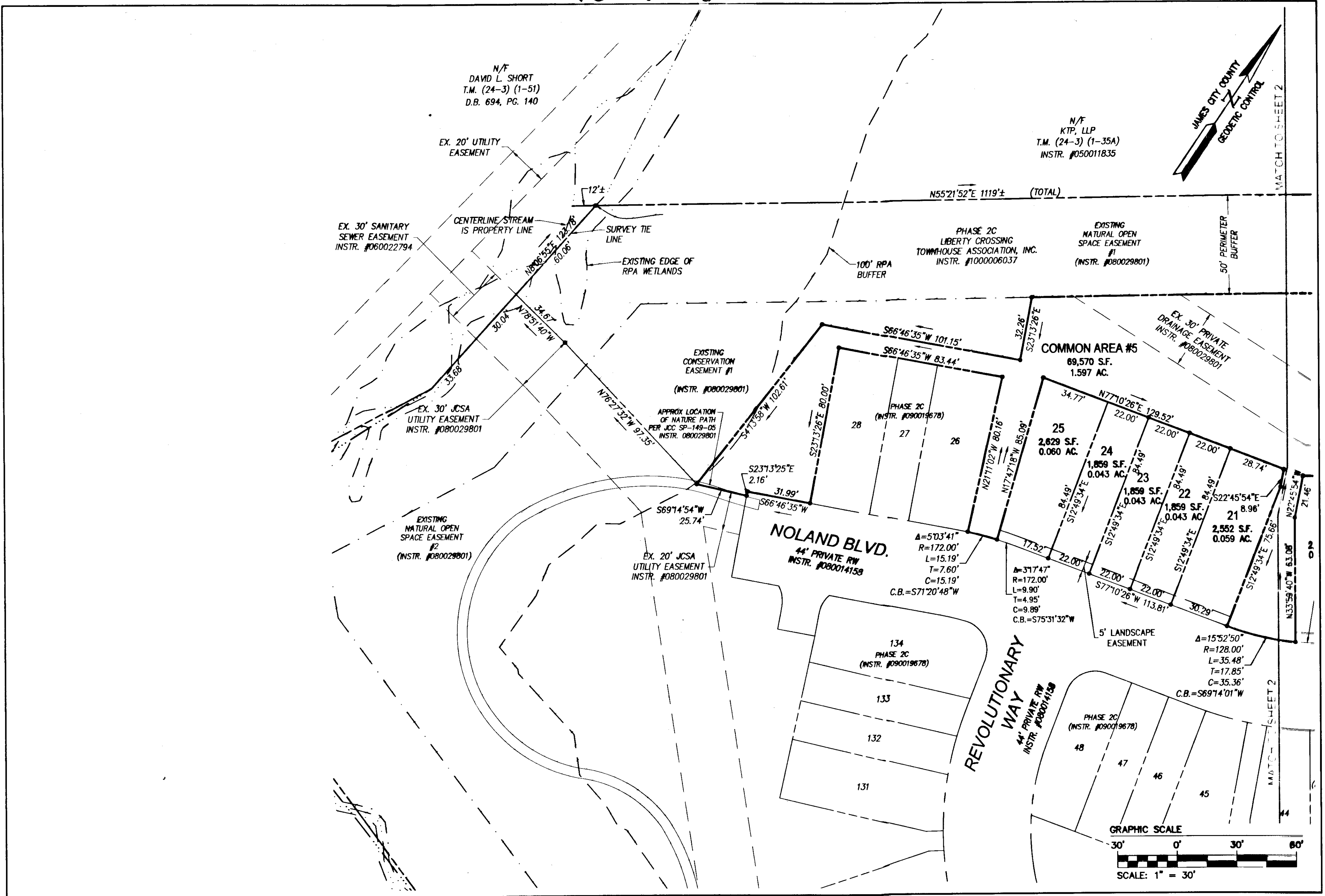


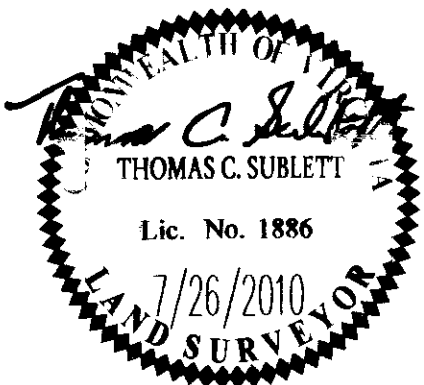
100024885



S:\Jobs\935305-Residential\Phase 2D\Plat\935305-Phase_2D_f03.dwg, 7/27/2010 11:31:19 AM, tom.sublett

Rev.	Date	Description	Revised By

City of Williamsburg & County of James City
 Circuit Court: This PLAT was recorded on
17 November 2010
 at 3:13 AM/PM, PB PG
 DOCUMENT # 100024885
 BETSY B. WOOLRIDGE, CLERK
Betsy Woolridge Clerk



3 Large/Small Plat(s) Recorded
 herewith as # 100024885

AES
 CONSULTING ENGINEERS

5248 Old Towne Road, Suite 1
 Williamsburg, Virginia 23188
 Phone: (757) 253-0040
 Fax: (757) 220-8994
 www.aesva.com

Hampton Roads | Central Virginia | Middle Peninsula

PLAT OF SUBDIVISION
PHASE 2D
LIBERTY CROSSING
 LOTS 11-25 &
 COMMON AREA #5

STONEHOUSE DISTRICT JAMES CITY COUNTY VIRGINIA

Project Contacts:	TCB
Project Number:	9353-05
Scale:	1"=30'
Date:	7/26/2010
Sheet Number:	3 OF 3