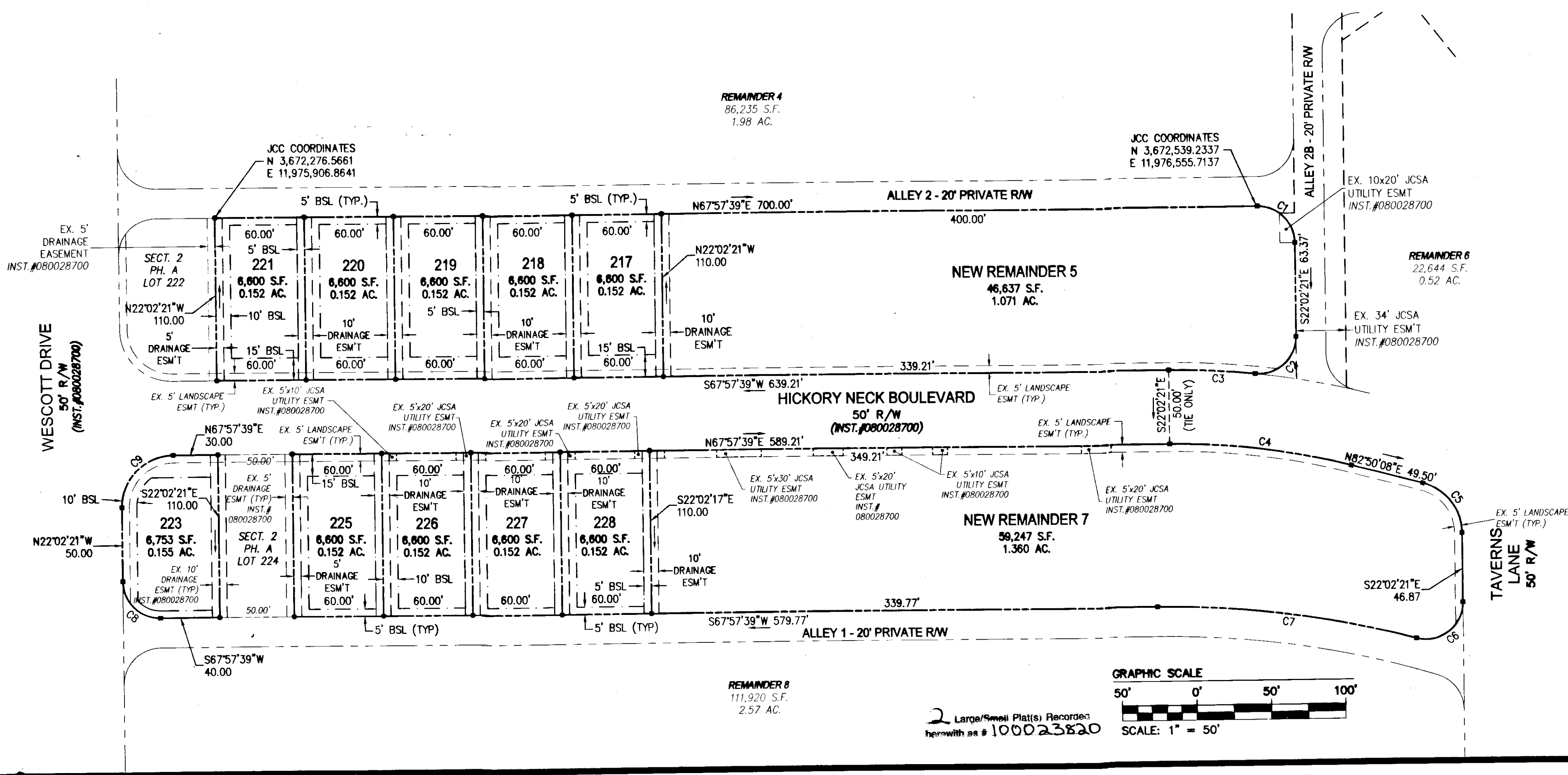
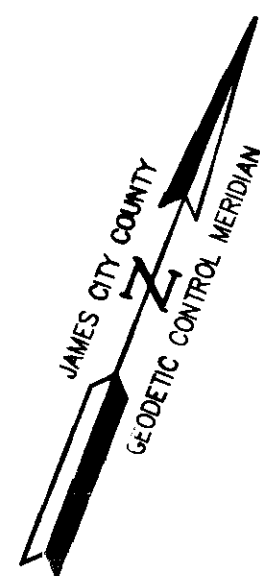


100023820

CURVE TABLE						
CURVE #	DELTA	RADIUS	LENGTH	TANGENT	CHORD	CHORD BEARING
C1	90°00'00"	25.00'	39.27'	25.00'	35.36'	S67°02'21"E
C2	96°20'45"	25.00'	42.04'	27.93'	37.26'	S26°08'02"W
C3	6°20'45"	525.00'	58.15'	29.10'	58.12'	S71°08'02"W
C4	14°52'29"	475.00'	123.32'	62.01'	122.97'	N75°23'54"E
C5	75°07'31"	35.00'	45.89'	26.92'	42.67'	S59°36'06"E
C6	105°22'09"	25.00'	45.98'	32.80'	39.77'	S30°38'44"W
C7	15°22'09"	655.00'	175.70'	88.38'	175.17'	S75°38'44"W
C8	90°00'00"	25.00'	39.27'	25.00'	35.36'	N67°02'21"W
C9	90°00'00"	35.00'	54.98'	35.00'	49.50'	N22°57'39"E



CONSULTING ENGINEERS

WILLIAMSBURG • RICHMOND • GLOUCESTER • FREDERICKSBURG

5248 Olde Towne Road, Suite 1  
Williamsburg, Virginia 23188  
(757) 253-0040  
Fax (757) 220-8994

**PLAT OF SUBDIVISION OF  
REMAINDER 12 AND A PORTION OF  
REMAINDERS 5 & 7  
WHITE HALL  
SECTION 2, PHASE B  
OWNER: RAUCH DEVELOPMENT CO., L.L.C.  
JCC CASE NO. S-0055-2008  
STONEHOUSE DISTRICT JAMES CITY COUNTY VIRGINIA**



No.	DATE	REVISION / COMMENT / NOTE	REVIEWED BY	REVIEWED BY

City of Williamsburg & County of James City  
Circuit Court: This PLAT was recorded on  
at 2:01 PM, PG. 11-3-2010  
DOCUMENT # 100023820  
BETSY B. WOOLRIDGE, CLERK  
Betsy B. Woolridge Clerk

Designed TCS	Drawn JF3
Scale 1"=50'	Date 12/16/09
Project No. 9048-11	
Drawing No. 2 of 2	