

100020444

SURVEYOR'S CERTIFICATE

I, ROBERT D. MANN, A DULY REGISTERED LAND SURVEYOR, DO HEREBY CERTIFY THAT, TO THE BEST OF MY KNOWLEDGE AND BELIEF, THIS PLAT FOR PHASE 14-A, UNITS #1401, 1402, 1403, AND 1404, WILLIAMSBURG VILLAGE AT NORGE CONDOMINIUM IS ACCURATE AND COMPLIES WITH THE PROVISIONS OF VIRGINIA CODE ANNY, SUBSECTION SS-79.58 (A), AS AMENDED.

Robert D. Mann 9/8/10
 ROBERT D. MANN, L.S. #002509 DATE

CE- COMMON ELEMENTS

COMMON ELEMENTS INCLUDE ALL PORTIONS OF THE CONDOMINIUM OTHER THAN THE UNITS DEFINED IN THE CONDOMINIUM INSTRUMENTS (AS DEFINED IN THE DECLARATION OF CONDOMINIUM).

EXAMPLES OF COMMON ELEMENTS ARE: PARKING, PAVED AREAS, THE GROUNDS (WHETHER OR NOT LANDSCAPED), ENTRANCE MONUMENTS, DRAINAGE PONDS, ALL PORTIONS OF THE BUILDINGS NOT A PART OF THE UNIT NOR DEFINED AS LIMITED COMMON ELEMENTS, AND ALL CONDUITS, INSTALLATIONS, WIRES, PIPES, EQUIPMENT, ETC. WHICH SERVE OTHER COMMON ELEMENTS OR WHICH SERVE MORE THAN ONE UNIT.

THE UNIT OWNERS ASSOCIATION IS RESPONSIBLE FOR MAINTENANCE OF COMMON LANDS TO THE EXTENT THE SAME ARE LOCATED WITHIN THE COMMON ELEMENTS OF THE CONDOMINIUM AND NOT WITHSTANDING THE FACT THAT A PORTION OF THOSE COMMON LANDS MAY BE SUBJECT TO A NATURAL OPEN SPACE EASEMENT DEDICATED TO JAMES CITY COUNTY.

LCE- LIMITED COMMON ELEMENTS

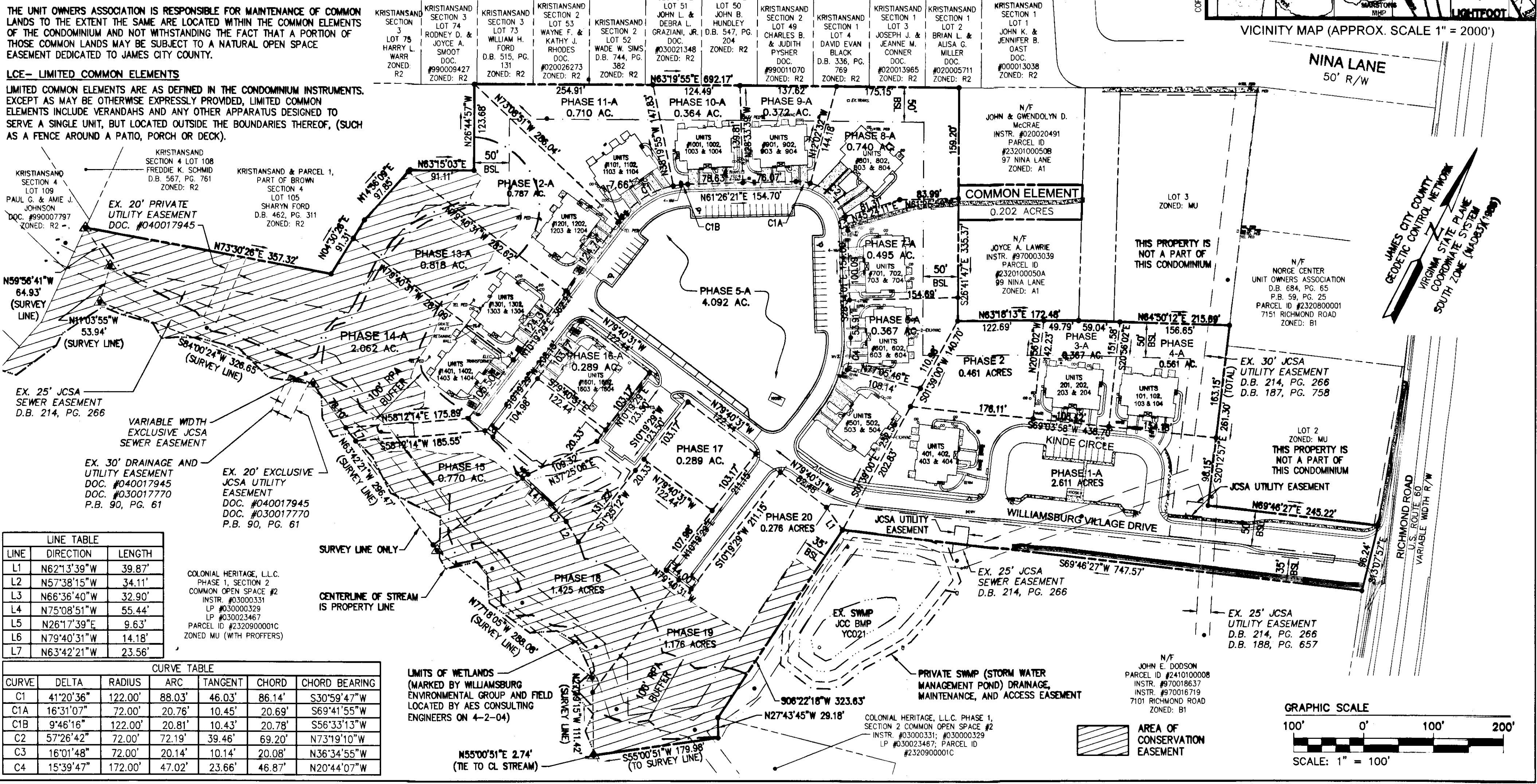
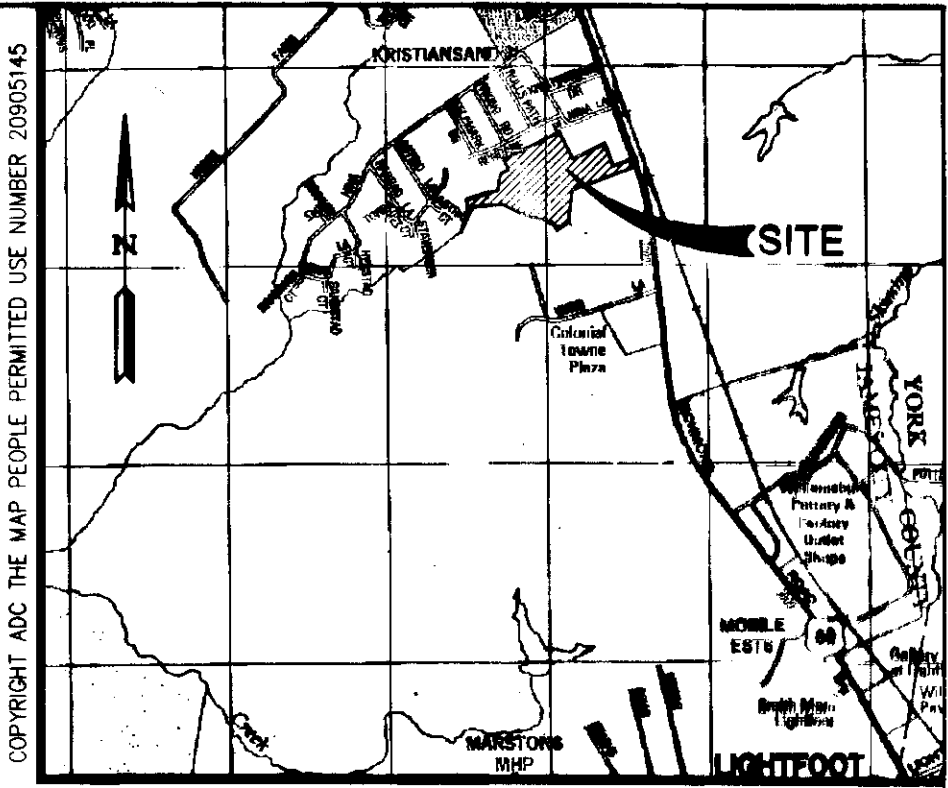
LIMITED COMMON ELEMENTS ARE AS DEFINED IN THE CONDOMINIUM INSTRUMENTS, EXCEPT AS MAY BE OTHERWISE EXPRESSLY PROVIDED, LIMITED COMMON ELEMENTS INCLUDE VERANDAHS AND ANY OTHER APPARATUS DESIGNED TO SERVE A SINGLE UNIT, BUT LOCATED OUTSIDE THE BOUNDARIES THEREOF, (SUCH AS A FENCE AROUND A PATIO, PORCH OR DECK).

AREA TABULATION

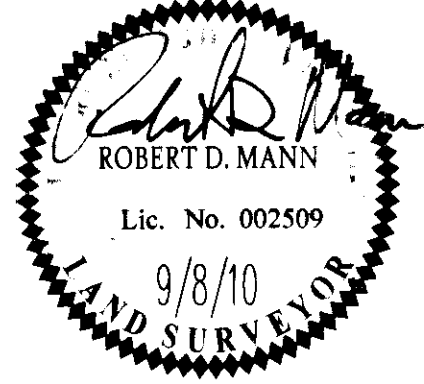
PHASE 1-A	2.611 AC±
PHASE 2	0.461 AC±
PHASE 3-A	0.367 AC±
PHASE 4-A	0.561 AC±
PHASE 5-A	4.092 AC±
PHASE 6-A	0.367 AC±
PHASE 7-A	0.495 AC±
PHASE 8-A	0.740 AC±
PHASE 9-A	0.372 AC±
PHASE 10-A	0.364 AC±
PHASE 11-A	0.710 AC±
PHASE 12-A	0.787 AC±
PHASE 13-A	0.818 AC±
PHASE 14-A	2.062 AC±
PHASE 15	0.770 AC±
PHASE 16-A	0.289 AC±
PHASE 17	0.289 AC±
PHASE 18	1.425 AC±
PHASE 19	1.176 AC±
PHASE 20	0.276 AC±
COMMON ELEMENT	0.202 AC±
TOTAL AREA	19.234 AC±

GENERAL NOTES:

1. SITE IS ZONED M-U, (MIXED USE) - WITH PROFFERS (PROFFERS RECORDED AS INSTRUMENT #040016082)
2. WETLANDS AND LAND WITHIN THE RESOURCE PROTECTION AREAS SHALL REMAIN IN A NATURAL UNDISTURBED STATE EXCEPT FOR THOSE ACTIVITIES PERMITTED BY SECTION 23-9(c)(1) OF THE JAMES CITY COUNTY CODE.
3. NATURAL OPEN SPACE EASEMENTS SHALL REMAIN IN A NATURAL UNDISTURBED STATE EXCEPT FOR THOSE ACTIVITIES REFERENCED ON THE DEED OF EASEMENT.
4. THE PROPERTY AS SHOWN IS ALL OF TAX PARCEL (23-2)(1-50). PROPERTY ADDRESS: 7145 RICHMOND ROAD.
5. THIS PROPERTY LIES IN ZONE "YC", (AREAS DETERMINED TO BE OUTSIDE THE 0.2% ANNUAL CHANCE FLOODPLAIN) PER F.I.R.M. #510950010C DATED 9/28/07.
6. PROPERTY REFERENCE: INSTRUMENT #040017945.
7. THIS PLAT HAS BEEN PREPARED WITHOUT THE BENEFIT OF A TITLE REPORT AND IS SUBJECT TO EASEMENTS, SERVITUDES AND COVENANTS OF RECORD.
8. THIS PLAT IS BASED ON AVAILABLE DEEDS AND PLATS OF RECORD AND DOES NOT REPRESENT AN ACTUAL FIELD SURVEY.



Rev	Date	Revised By



AES
 CONSULTING ENGINEERS
 5248 Olde Towne Road, Suite 1
 Williamsburg, Virginia 23188
 Phone: (757) 253-0040
 Fax: (757) 220-8994
 www.aesva.com

"EXHIBIT M-1"
 PLAT OF CONDOMINIUM
WILLIAMSBURG VILLAGE AT NORGE CONDOMINIUM
 PHASE 14-A
 UNITS #1401, 1402, 1403, AND 1404
 STONEHOUSE DISTRICT COUNTY OF JAMES CITY VIRGINIA

Project Contact: AFR
 Project Number: 9286-02-B
 Scale: 1" = 100'
 Date: 08-8-2010
 Sheet Number: 1 OF 9