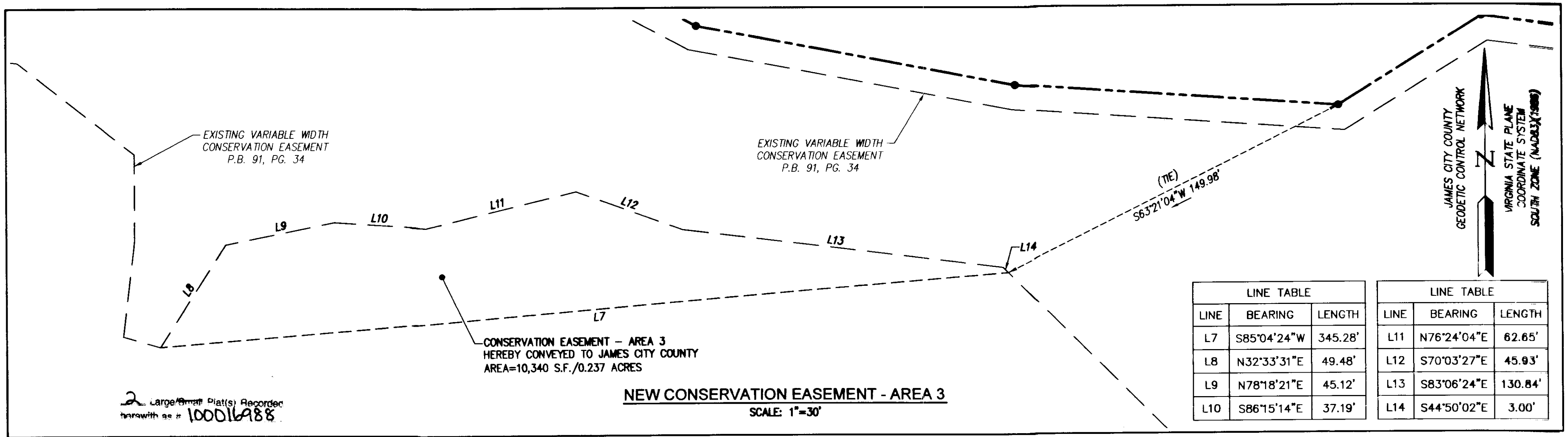
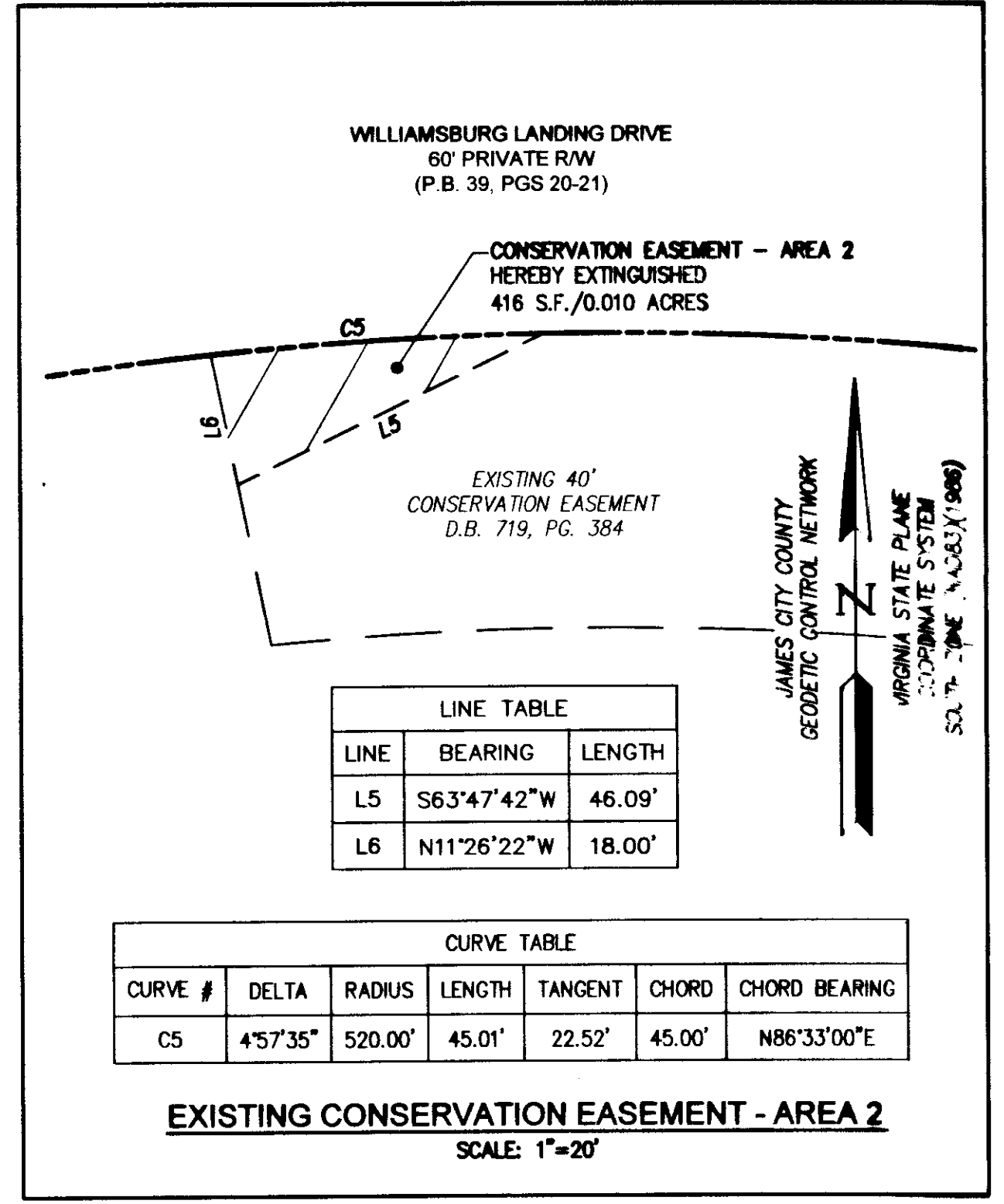
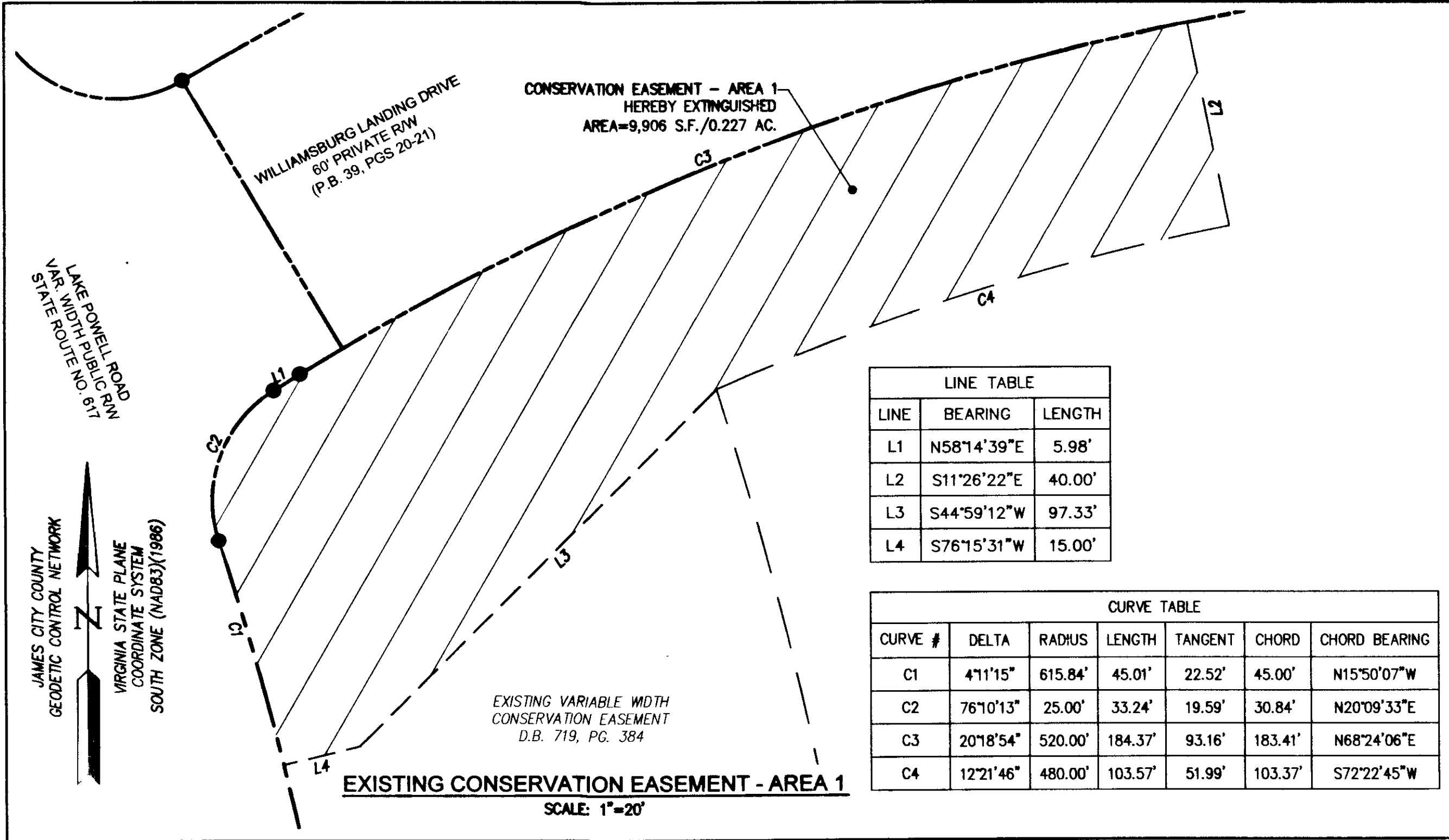
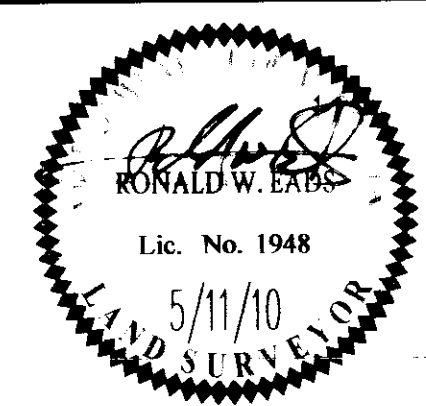


100016988



City of Williamsburg & County of James City	
Circuit Court: This PLAT was recorded on	
8-16-2010	
at 10:48 AM/PM, PG. 1	
DOCUMENT # 100016988	
BETSY B. WOOLRIDGE, CLERK	
<i>Betsy B. Woolridge</i> Clerk	
Rev. Date	Revised By



**AES**  
CONSULTING ENGINEERS

5248 Old Towne Road, Suite 1  
Williamsburg, Virginia 23188  
Phone: (757) 253-0040  
Fax: (757) 220-8994  
www.aesva.com

Hampton Roads | Central Virginia | Middle Peninsula

PLAT OF CONSERVATION EASEMENT EXCHANGE  
**WILLIAMSBURG LANDING**

JAMESTOWN DISTRICT | JAMES CITY COUNTY | VIRGINIA

Project Contacts:	RDM
Project Number:	8162-08
Scale:	Date:
AS NOTED	5/11/10
Sheet Number	
<b>2 OF 2</b>	