



Vanasse Hangen Brustlin, Inc.

Transportation
Land Development
Environmental Services

351 McLaws Circle, Suite 3
Williamsburg, Virginia 23185
757-220-0500 • FAX 757-220-8544

Legend

- CONSERVATION EASEMENT SIGN
- SUBJECT AREA LIMITS
- PROPOSED RIGHT-OF-WAY
- PROPOSED PROPERTY LINE
- PROPOSED SETBACK LINE
- PRIVATE DRAINAGE EASEMENT
- JCSA UTILITY EASEMENT
- LIMITS OF WETLANDS
- 100' RPA BUFFER

No.	Revision	Date	App'd
5	Comment letter(s)	7/13/09	
4	Subdivide Section I/A	1/2/09	
3	Comment letter(s)	2/11/08	
2	Comment letter(s)	11/28/07	
1	Comment letter(s)	10/02/07	

Designed by	Drawn by	MAG	Checked by	GMC
CAD checked by	GMC	Approved by		
Scale	1" = 100'	Date	7/1/08	
Project Title	Windmill Meadows Section I			

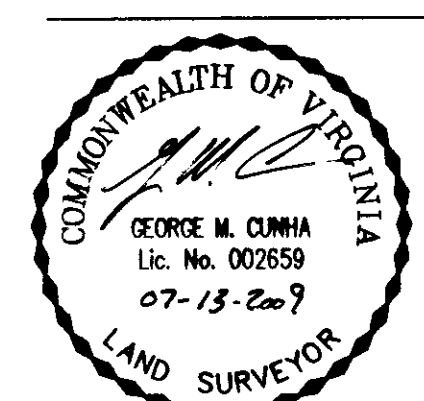
Windmill Meadows
Section I
Lots 19-26
James City County, Virginia
Issued for

Drawing Title
Subdivision Plat
of the property of
Windmill Meadows, LLC

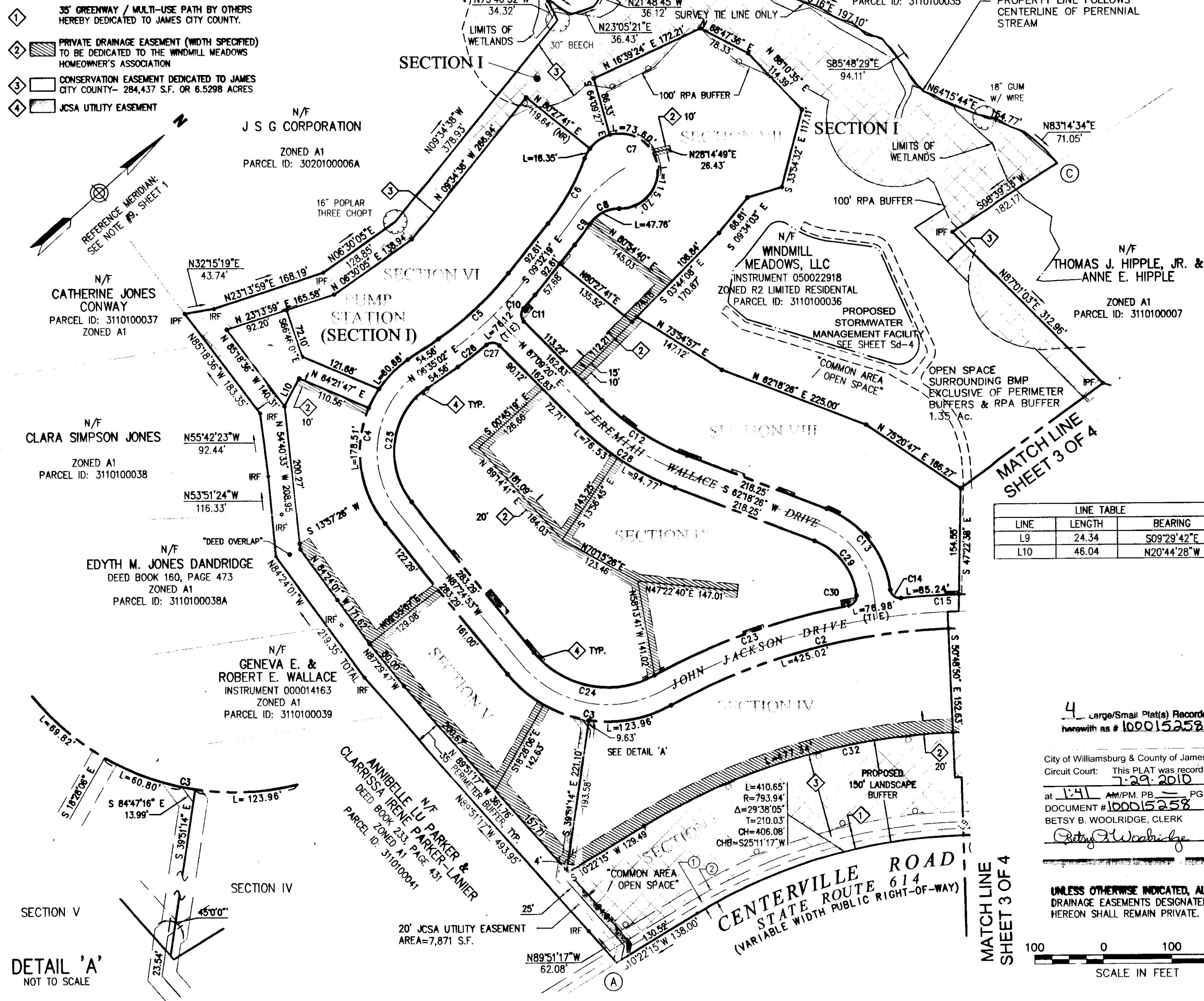
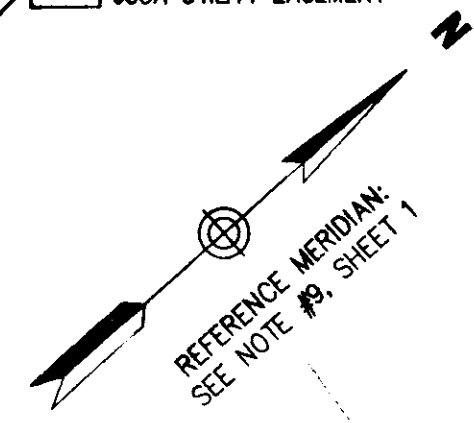
Drawing Number
Sd-2

Sheet of
2 of 4

Project Number
31915.00



- EXISTING EASEMENT LEGEND
- ① 10' STD. UNDERGROUND C & P EASEMENT PER VDOT PROJECT 0614-047-132.M 502
 - ② 20' STD. AERIAL VIRGINIA POWER EASEMENT PER VDOT PROJECT 0614-047-132.M 502
- PROPOSED EASEMENT LEGEND
- ① 35' GREENWAY / MULTI-USE PATH BY OTHERS HEREBY DEDICATED TO JAMES CITY COUNTY.
 - ② PRIVATE DRAINAGE EASEMENT (WIDTH SPECIFIED) TO BE DEDICATED TO THE WINDMILL MEADOWS HOMEOWNER'S ASSOCIATION
 - ③ CONSERVATION EASEMENT DEDICATED TO JAMES CITY COUNTY- 284,437 S.F. OR 6.5298 ACRES
 - ④ JCSA UTILITY EASEMENT



MATCH LINE SHEET 3 OF 4

LINE	LENGTH	BEARING
L9	24.34	S09°29'42"E
L10	46.04	N20°44'28"W

4 Large/Small Plat(s) Recorded herewith as # 100015258

City of Williamsburg & County of James City Circuit Court: This PLAT was recorded on 7-29-2010 at 1:41 AM/PM, PB. PG. DOCUMENT # 100015258 Betsy B. Woolridge, CLERK

UNLESS OTHERWISE INDICATED, ALL DRAINAGE EASEMENTS DESIGNATED HEREON SHALL REMAIN PRIVATE.

SCALE IN FEET

DETAIL 'A'
NOT TO SCALE

MATCH LINE SHEET 3 OF 4