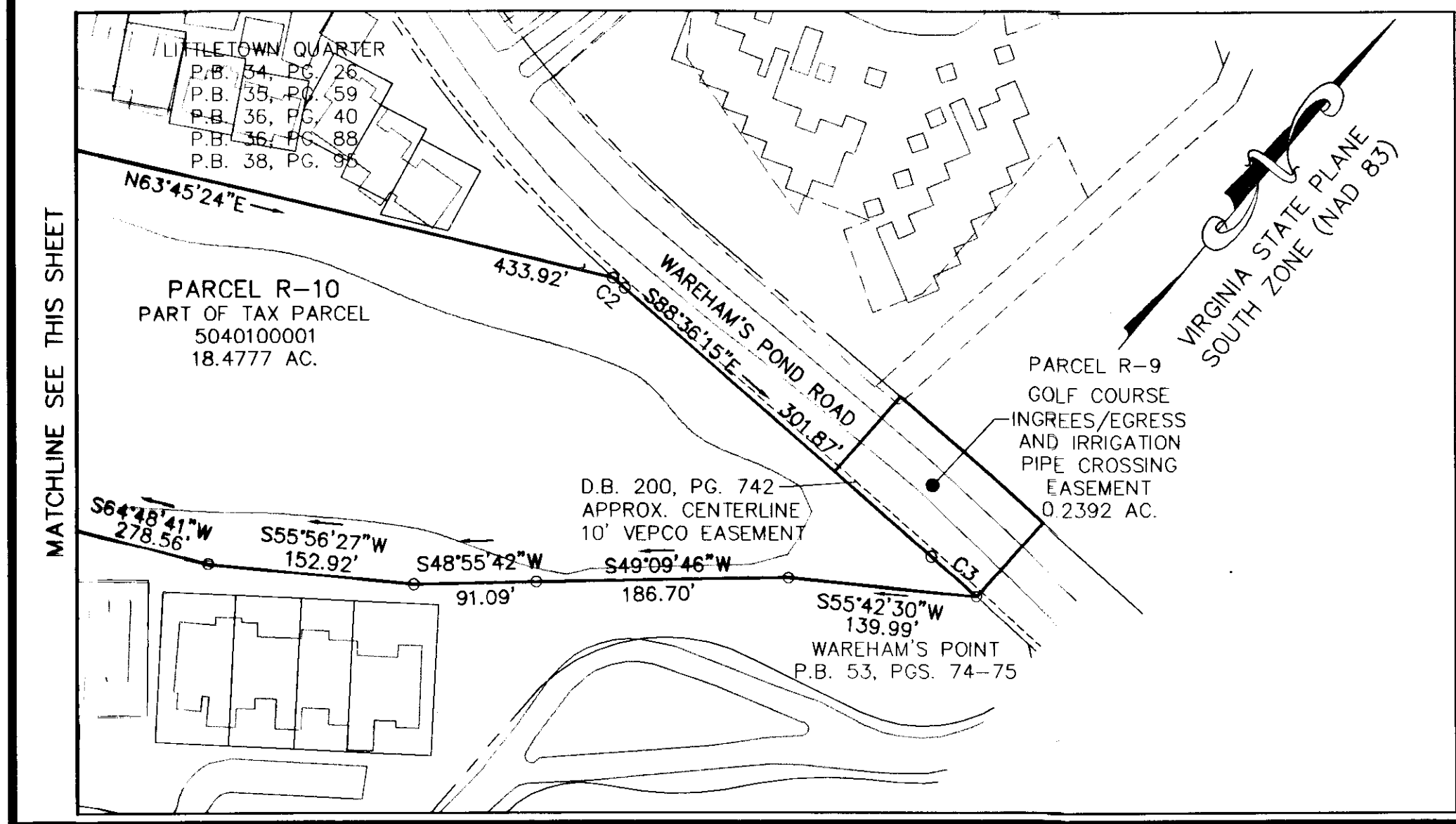
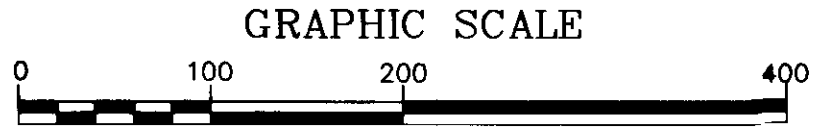


MATCHLINE SEE THIS SHEET



LINE	LENGTH	BEARING
L1	3.65'	S38°28'50"E
L2	15.21'	N51°31'11"E
L3	4.60'	N64°59'56"E
L4	3.00'	S24°43'40"E
L5	50.00'	N65°16'20"E
L6	3.00'	N24°43'40"W
L7	50.00'	N65°16'20"E
L8	4.00'	S24°43'40"E
L9	47.92'	N65°16'20"E
L10	4.00'	N24°43'40"W
L11	50.00'	N65°16'20"E
L12	56.84'	S89°01'42"W
L13	17.09'	S32°05'01"W
L14	33.55'	S43°59'47"E

CURVE	LENGTH	RADIUS	TANGENT	CHORD	CHORD BEARING	DELTA
C1	320.64'	1250.00'	161.21'	319.76'	S04°08'25"W	14°41'50"
C2	11.48'	945.38'	5.74'	11.48'	S88°15'22"E	0°41'46"
C3	44.58'	3464.00'	22.29'	44.58'	N88°14'08"W	0°44'14"



(IN FEET)
1 inch = 100ft.

City of Williamsburg & County of James City
Circuit Court: This PLAT was recorded on
at 3:28 AM/PM, PG. 26 July 2010
DOCUMENT # 100014985
BETSY B. WOOLRIDGE, CLERK
Betsy B. Woolridge Clerk

2 Large/Small Plat(s) Recorded
herewith as # 100014985

BOUNDARY PLAT
PARCEL R-10
A PORTION OF
TAX PARCEL 5040100001
STANDING IN THE NAME OF
BUSCH PROPERTIES INC.
ROBERTS DISTRICT, JAMES CITY COUNTY, VIRGINIA
DATE: 4/7/2010 SCALE: 1"=100'
REVISED 7/21/10
SHEET 2 OF 2

LANDMARK
DESIGN GROUP
Landscape Architects • Planners • Surveyors
Environmental Consultants

One Columbus Center
Suite 1100
Virginia Beach, VA 23462
Tel. (757) 473-2000
Fax (757) 497-7933
Email: lmdg@landmarkdg.com