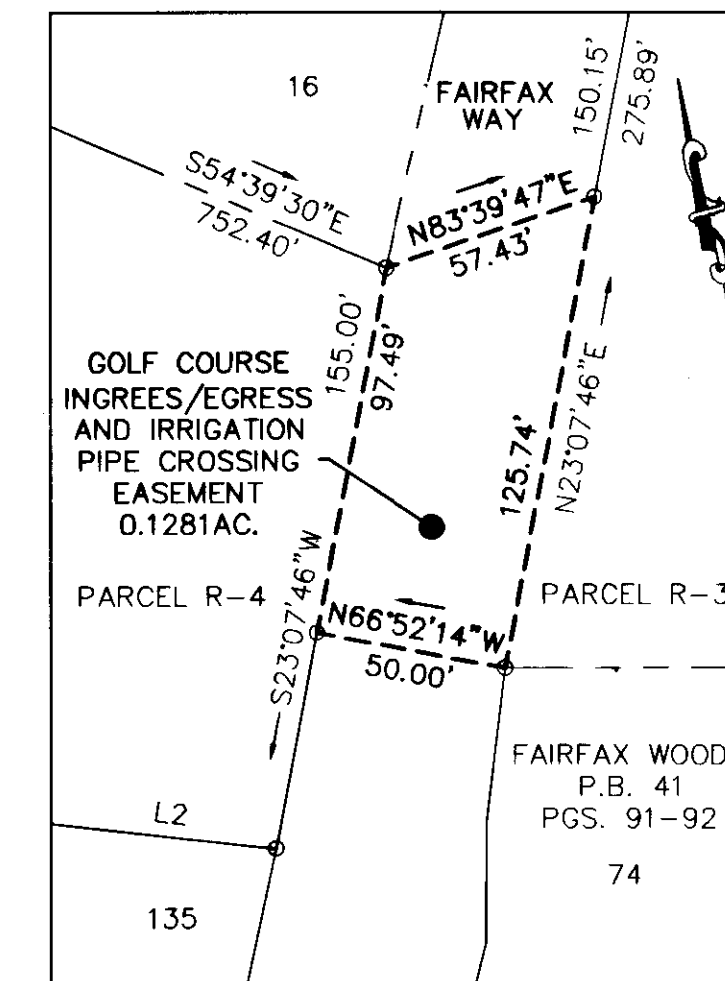
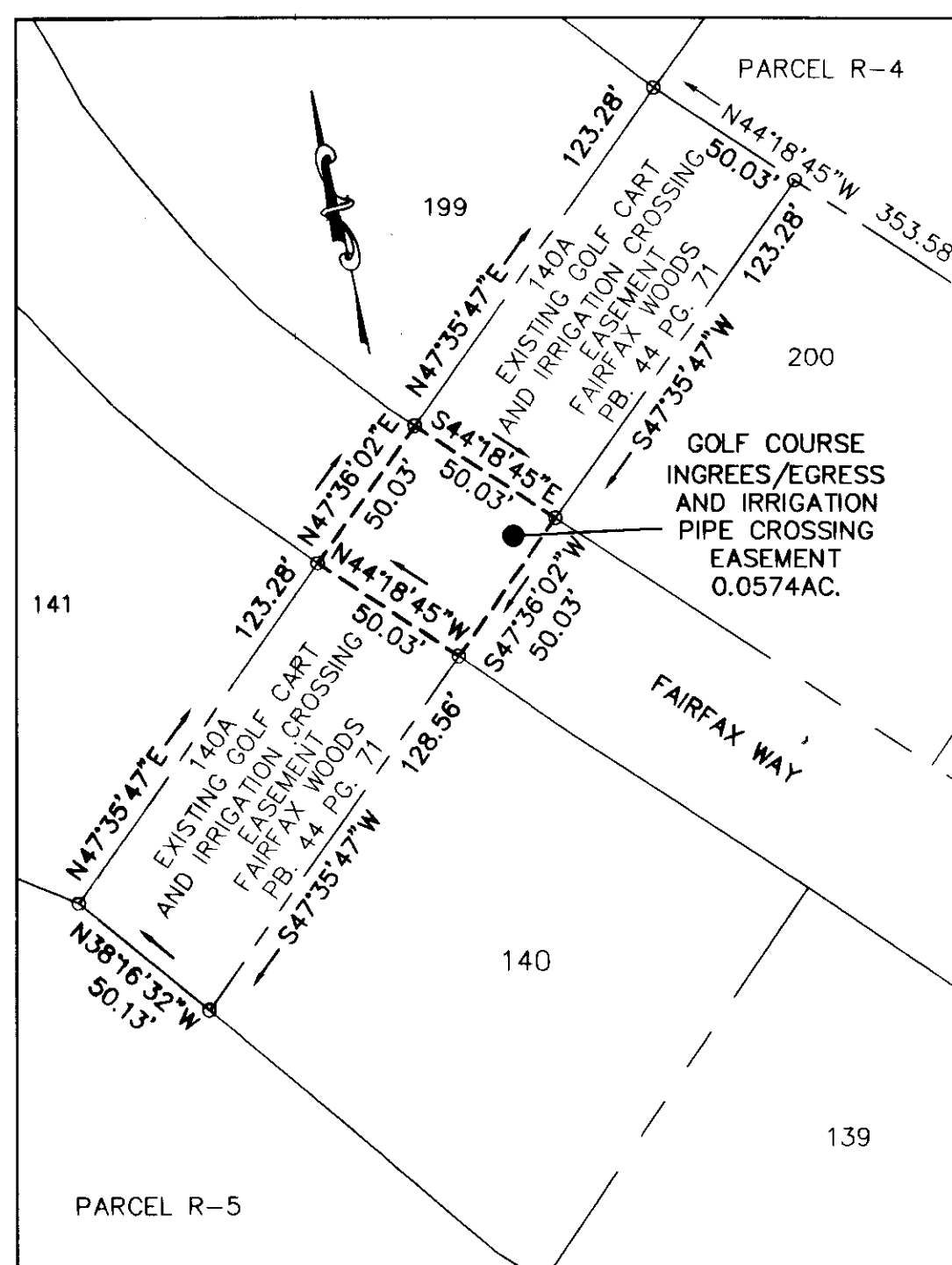
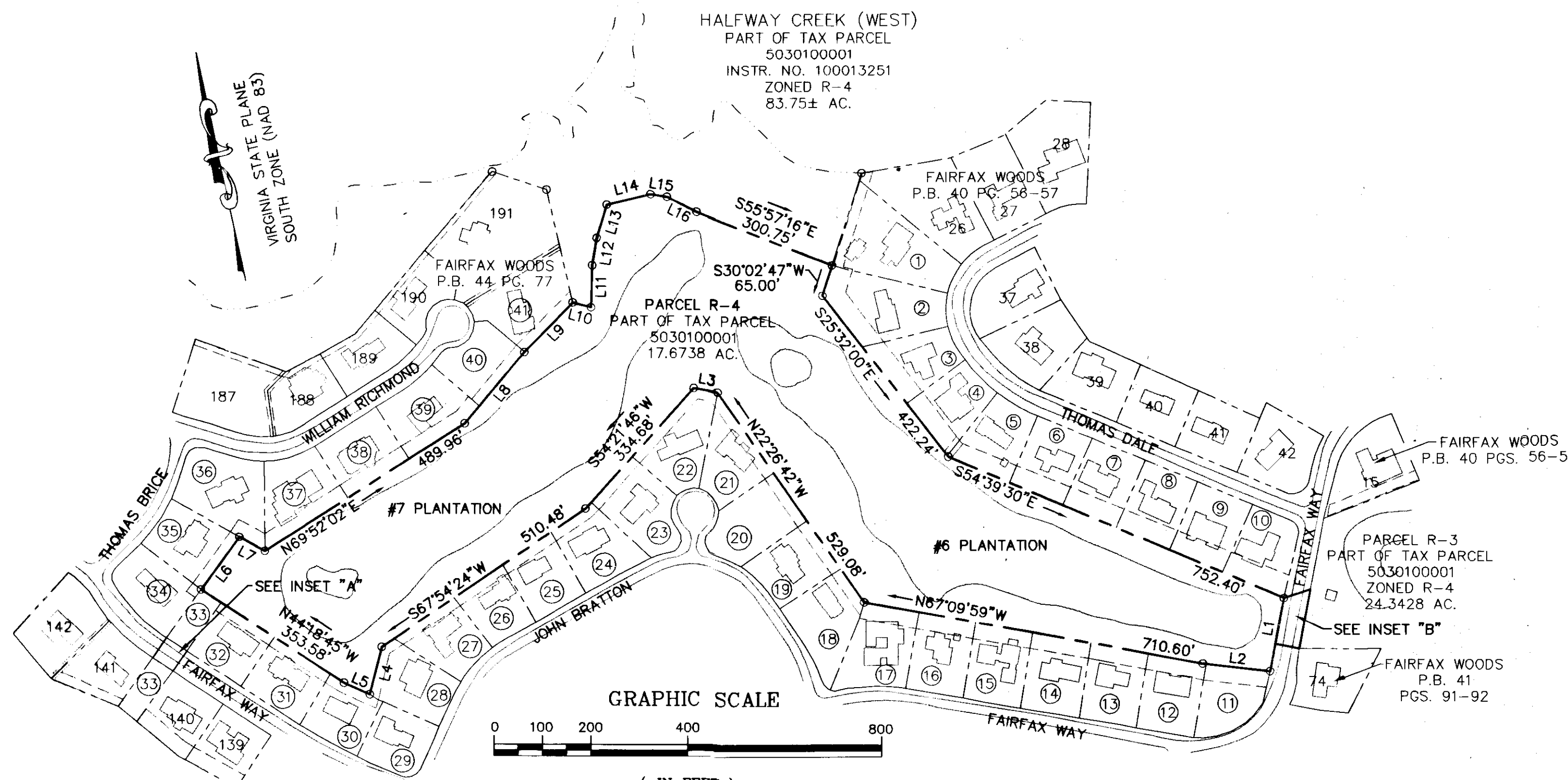


100014959

BOUNDARY PLAT
PARCEL R-4
 A PORTION OF
 TAX PARCEL 5030100001
 STANDING IN THE NAME OF
BUSCH PROPERTIES INC.
 ROBERTS DISTRICT, JAMES CITY COUNTY, VIRGINIA
 DATE: 4/7/10 SCALE: 1"=200'
 REVISED 7/21/10
 SHEET 2 OF 2

PROPERTY LINE TABLE		
LINE	LENGTH	BEARING
L1	155.00'	S23°07'46"W
L2	139.40'	N71°09'55"W
L3	49.40'	N68°37'46"W
L4	101.42'	S26°33'54"W
L5	58.14'	N53°20'36"W
L6	134.97'	N48°24'03"E
L7	60.00'	S48°41'12"E
L8	192.08'	N52°13'28"E
L9	143.35'	N56°13'28"E
L10	39.36'	S63°10'06"E
L11	86.69'	N13°51'44"E
L12	57.52'	N21°24'37"E
L13	72.11'	N29°18'25"E
L14	92.59'	N88°49'38"E
L15	34.52'	S69°11'07"E
L16	68.37'	S51°13'57"E



Large/Small Plat(s) Recorded
 herewith as # 100014959

City of Williamsburg & County of James City
 Circuit Court: This PLAT was recorded on
 at 1:11 PM, July 2010
 DOCUMENT # 100014959
 BETSY B. WOOLRIDGE, CLERK
 Betsy B. Woolridge, Clerk

**LANDMARK
 DESIGN GROUP**
 Engineers • Planners • Surveyors
 Landscape Architects • Environmental Consultants

One Columbus Center
 Suite 1100
 Virginia Beach, VA 23462
 Tel. (757) 473-2000
 Fax (757) 497-7933
 Email: lmdg@landmarkdg.com