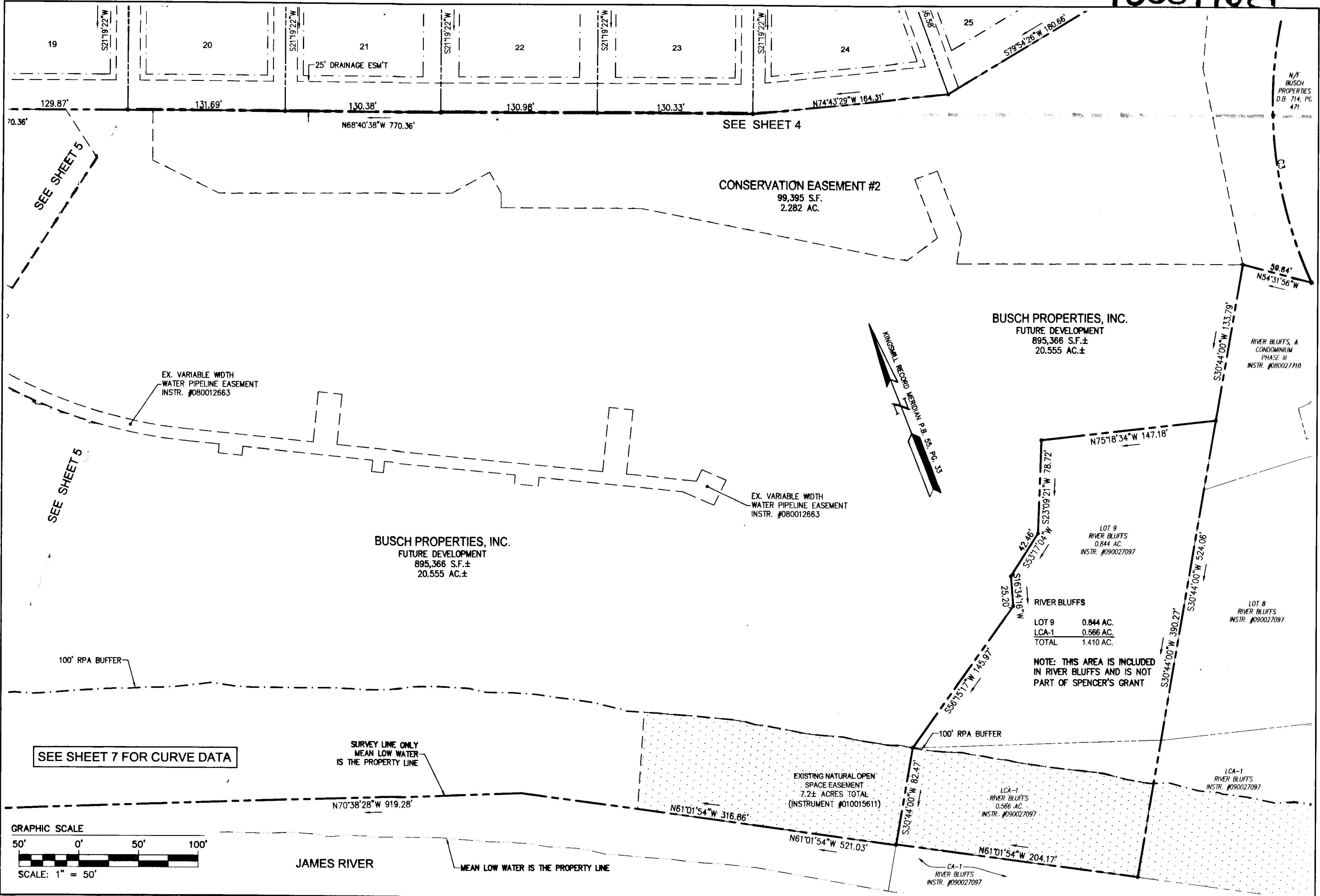
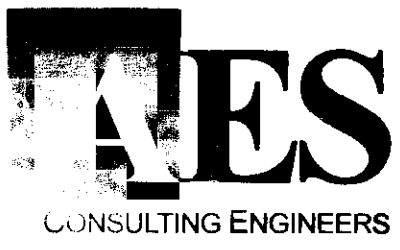
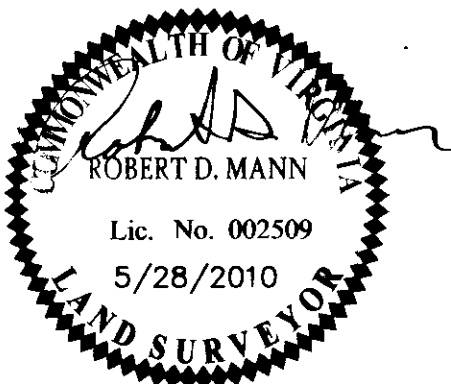


100014684



S:\Suba\7753\20 Spencer's Grant\Plat\PHASE 1 Correction\Option1\775320 SUBDDZ.shx08.dwg, 6/10/2010 7:29:52 AM, rmlk.appenon

City of Williamsburg & County of James City		
Circuit Court: This PLAT was recorded on		
22 July 2010		
at 10:45 AM PM PG		
DOCUMENT # 100014684		
BETSY B. WOOLRIDGE, CLERK		
<i>Betsy B. Woolridge</i> Clerk		
1	5/28/2010	RDM
Rev.	Date	Description
		Revised By



5248 Olde Towne Road, Suite 1
Williamsburg, Virginia 23188
Phone: (757) 253-0040
Fax: (757) 220-8994
www.aesva.com

PLAT OF CORRECTION
SPENCER'S GRANT
KINGSMILL ON THE JAMES
PHASE 1, LOTS 1 - 38
OWNER/DEVELOPER: BUSCH PROPERTIES, INC.

ROBERTS DISTRICT JAMES CITY COUNTY VIRGINIA

Project Contacts:	RDM
Project Number:	7753-20
Scale:	1" = 50'
Date:	4/2/2010
Sheet Number	6 OF 7