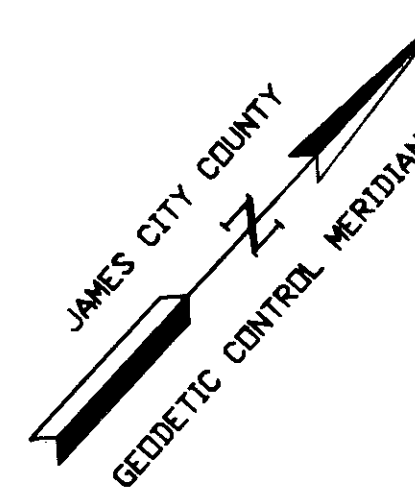


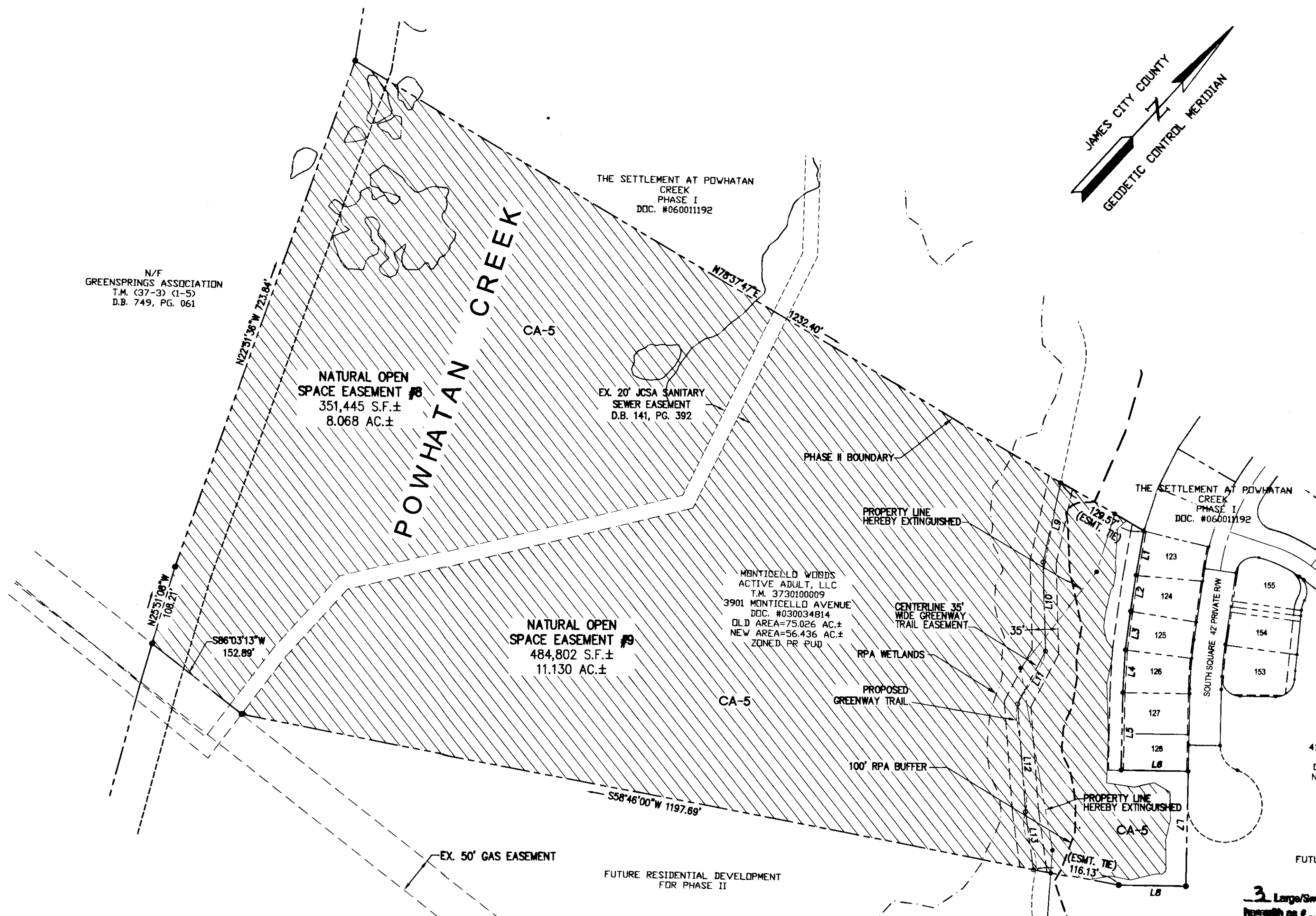
100013938

CA-5 LINE TABLE		
LINE	BEARING	LENGTH
L1	S32°12'04"E	60.26'
L2	S33°52'04"E	49.13'
L3	S34°29'58"E	52.76'
L4	S39°02'12"E	57.64'
L5	S41°09'37"E	105.00'
L6	N48°50'23"E	90.00'
L7	S41°09'37"E	155.00'
L8	S48°50'23"W	90.00'

GREENWAY TRAIL LINE TABLE		
LINE	BEARING	LENGTH
L9	S29°49'04"E	109.19'
L10	S43°48'44"E	120.56'
L11	S14°40'43"E	80.31'
L12	S46°30'34"E	145.92'
L13	S50°06'59"E	78.92'



N/F
GREENSPRINGS ASSOCIATION
T.M. (37-3) (1-5)
D.B. 749, PG. 061



NOTE:
SEE SHEET 2 FOR
NATURAL OPEN SPACE
LINE TABLE

MONTICELLO WOODS
ACTIVE ADULT, LLC
T.M. 3740100010
4101 MONTICELLO AVENUE
D.D.C. #030034814
OLD AREA= 50.252 AC.±
NEW AREA= 47.587 AC.±
ZONED PR PUD

FUTURE RESIDENTIAL DEVELOPMENT
FOR PHASE II

3 Large/Small Plats(s) Recorded
Instrument # 100013938

STATE OF VIRGINIA
CITY OF WILLIAMSBURG & COUNTY OF JAMES CITY CIRCUIT COURT.
THIS 7 DAY OF July, 2010
THE PLAT SHOWN HEREON WAS PRESENTED AND ADMITTED TO
THE RECORD AS THE LAW DIRECTS. 011:29AM/DM
INSTRUMENT # 100013938

TESTE: *Betsy B. Woolridge*
BETSY B. WOOLRIDGE, CLERK

By: *Claudia H. BIRKILL, Dep. Clerk*

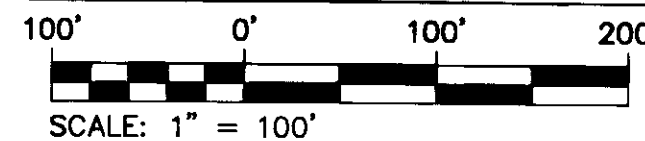
INDICATES AREA OF NATURAL OPEN SPACE TO
REMAIN UNDISTURBED AND TO BE DEDICATED TO
JAMES CITY COUNTY.

NOTE:
THIS SHEET ADDRESSES COMMON AREA #5
ONLY. (CA-5)

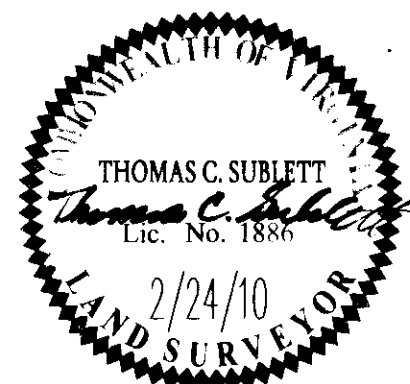
COMMON AREA 5

870,742 S.F.± OR
19.989 AC.±

GRAPHIC SCALE



Rev.	Date	Description	Revised By
1	4/27/10	REVISED PER COUNTY COMMENTS	JFS



AES
CONSULTING ENGINEERS
Hampton Roads | Central Virginia | Middle Peninsula
5248 Olde Towne Road, Suite 1
Williamsburg, Virginia 23188
Phone: (757) 253-0040
Fax: (757) 220-8994
www.aesva.com

PLAT OF SUBDIVISION
THE SETTLEMENT AT POWHTAN CREEK
PHASE II
LOTS 123-128 AND 153-155
BERKELEY DISTRICT | JAMES CITY COUNTY | VIRGINIA

Project Contacts: TRS/RDM	
Project Number: 9254-08	
Scale: 1"=40'	Date: 02/23/10
Sheet Number	

3 of 3