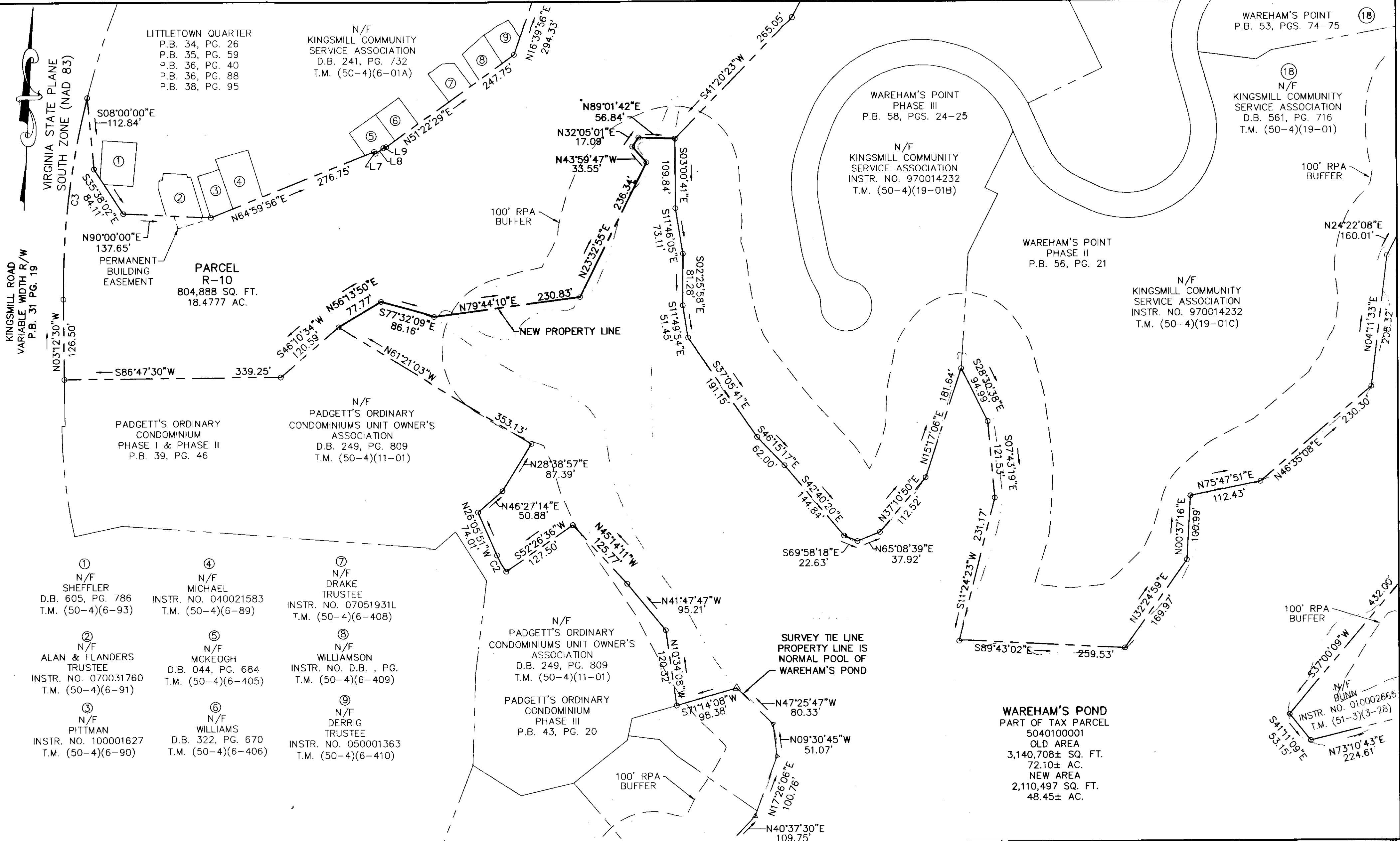


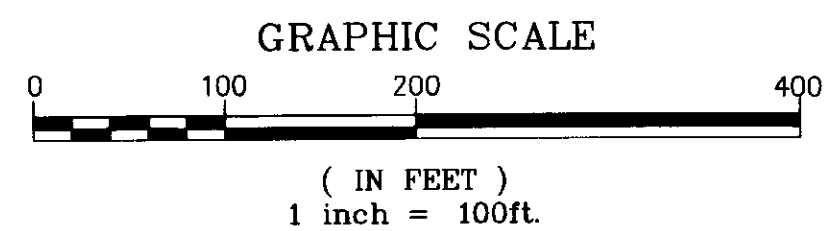
100013867

MATCHLINE SEE SHEET 2

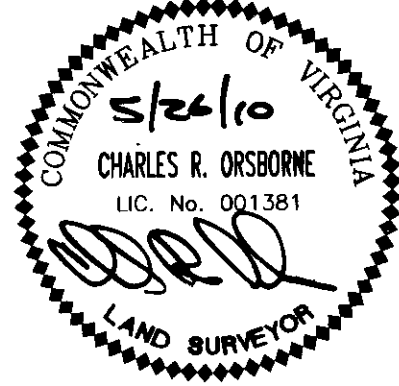


MATCHLINE SEE SHEET 5
MATCHLINE SEE SHEET 6

MATCHLINE SEE SHEET 4



City of Williamsburg & County of James City
Circuit Court: This PLAT was recorded on
2 July 2010
at 3:58 AM/PM, PG. —
DOCUMENT # 100013867
BETSY B. WOOLRIDGE, CLERK
Betsy B. Woolridge Clerk



PLAT SHOWING
PARCEL R-1, PARCEL R-10, AND
WAREHAM'S POND
BEING A SUBDIVISION OF
TAX PARCEL 504100001
PROPERTY OF
BUSCH PROPERTIES, INC.
ROBERTS DISTRICT, JAMES CITY COUNTY, VIRGINIA
DATE: 4/08/10 SCALE: 1"=100'
REVISED 5/26/10
SHEET 3 OF 6

Large/Small Plat(s) Recorder
Recorded as # 100013867



One Columbus Center
Suite 1100
Virginia Beach, VA 23462
Tel. (757) 473-2000
Fax (757) 497-7933
Email: lmdg@landmarkdg.com