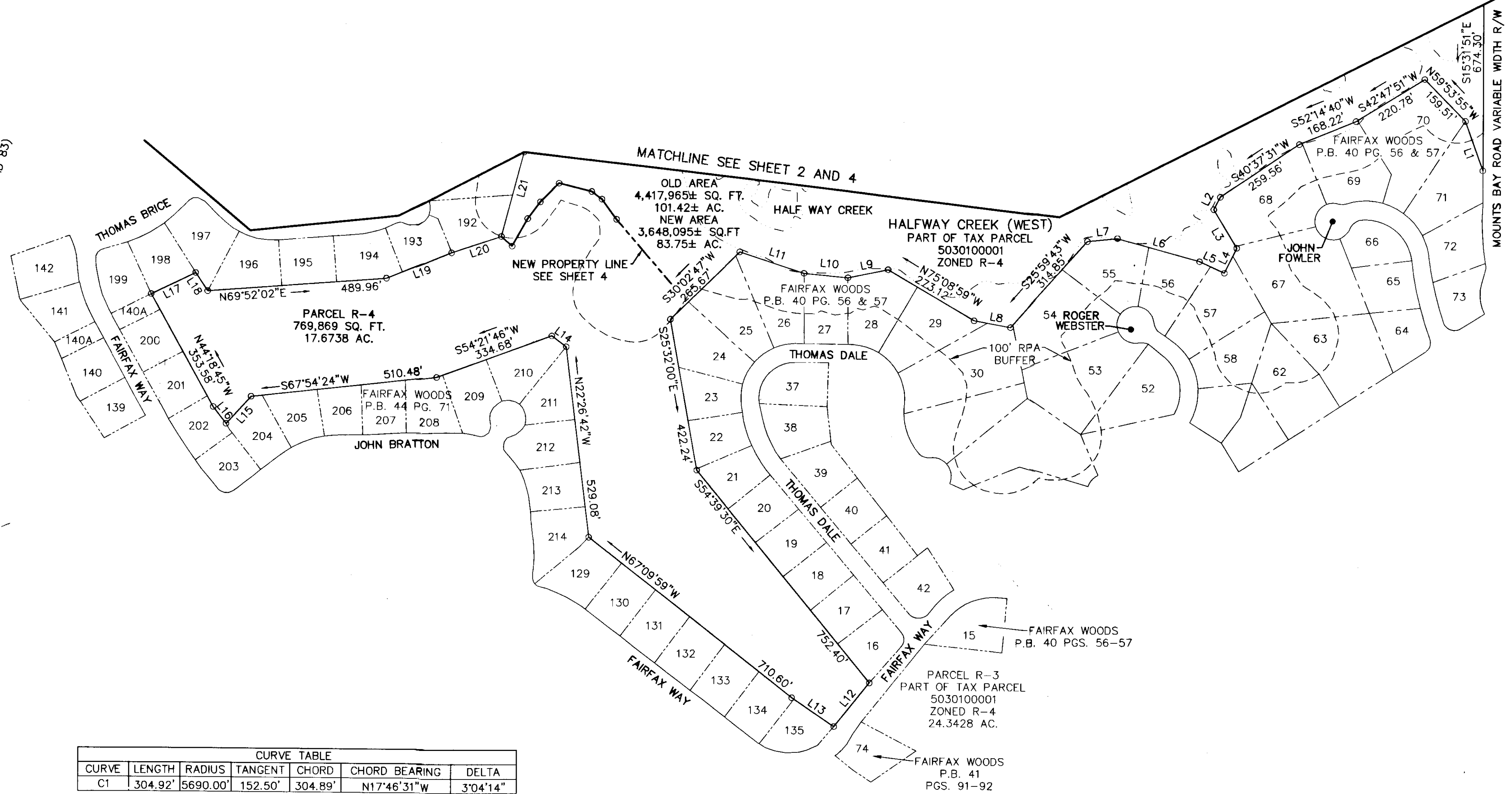
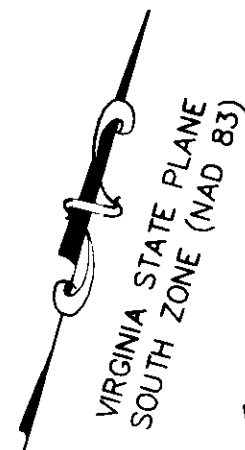


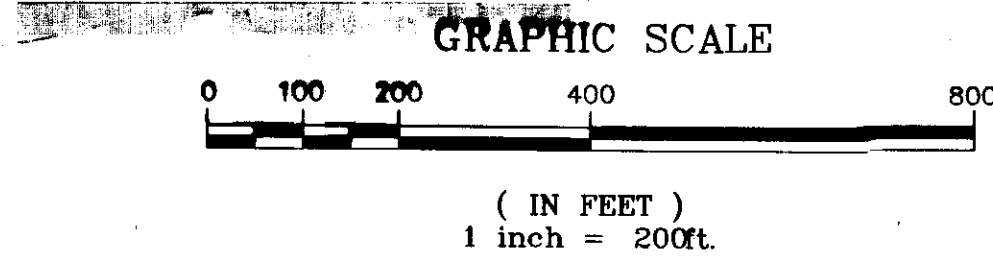
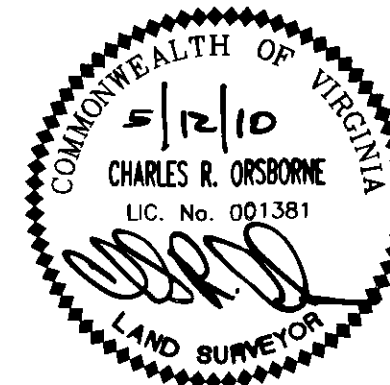
100013251



CURVE TABLE						
CURVE	LENGTH	RADIUS	TANGENT	CHORD	CHORD BEARING	DELTA
C1	304.92'	5690.00'	152.50'	304.89'	N17°46'31"W	3°04'14"

LINE TABLE			LINE TABLE			LINE TABLE		
LINE	LENGTH	BEARING	LINE	LENGTH	BEARING	LINE	LENGTH	BEARING
L1	143.84'	N35°11'23"W	L24	213.78'	N79°12'57"W	L47	205.87'	N20°05'25"W
L2	38.83'	S11°53'19"W	L25	180.28'	S56°18'36"W	L48	183.41'	S75°41'14"E
L3	123.07'	S46°19'01"E	L26	134.16'	N63°26'06"W	L49	124.20'	N76°58'15"E
L4	76.30'	S10°34'25"W	L27	112.00'	N79°00'00"E	L50	103.25'	N45°47'05"E
L5	74.97'	N80°47'20"W	L28	180.00'	N50°00'00"E	L51	110.00'	S41°35'11"E
L6	233.00'	N90°00'00"W	L29	105.00'	N22°00'00"E	L52	82.32'	N44°51'45"E
L7	82.64'	S68°42'49"W	L30	117.46'	S26°58'13"E	L53	265.00'	N08°45'00"E
L8	101.40'	S84°54'28"W	L31	125.00'	S00°00'00"E	L54	90.00'	N23°00'00"E
L9	112.35'	S62°31'32"W	L32	169.25'	S16°49'44"W	L55	110.00'	S38°30'00"E
L10	120.35'	S79°51'26"W	L33	52.00'	S62°00'00"E	L56	60.00'	S80°00'00"E
L11	185.05'	N87°12'51"W	L34	115.00'	N22°00'00"E	L57	180.00'	N43°15'00"E
L12	155.00'	S23°07'46"W	L35	115.00'	N43°22'03"E	L58	125.00'	N08°00'00"E
L13	139.40'	N71°09'55"W	L36	143.17'	S40°31'53"E	L59	113.00'	N15°30'00"W
L14	49.40'	N68°37'46"W	L37	115.00'	S82°30'00"E	L60	150.01'	N70°00'00"E
L15	101.42'	S26°33'54"W	L38	115.14'	S66°59'57"E	L61	156.01'	N19°00'00"E
L16	58.14'	N53°20'36"W	L39	120.00'	N68°00'00"E	L62	149.06'	S59°53'08"E
L17	134.97'	N48°24'03"E	L40	175.02'	S01°33'05"E	L63	39.36'	S63°10'06"E
L18	60.00'	S48°41'12"E	L41	69.20'	S52°38'00"E	L64	86.69'	N13°51'44"E
L19	192.08'	N52°13'28"E	L42	192.27'	N71°11'17"E	L65	57.52'	N21°24'37"E
L20	143.35'	N56°13'28"E	L43	140.80'	N42°59'07"E	L66	72.11'	N29°18'25"E
L21	239.02'	N00°43'09"W	L44	87.00'	S43°36'10"E	L67	92.59'	N88°49'38"E
L22	118.34'	N59°32'04"W	L45	186.56'	S77°18'17"E	L68	34.52'	S69°11'07"E
L23	158.11'	S71°33'54"W	L46	64.44'	N41°51'18"E	L69	68.37'	S51°13'57"E

City of Williamsburg & County of James City
 Circuit Court, This PLAT was recorded on
 29 June 2010
 at 12:09 AM PM, PB _____ PG _____
 DOCUMENT # 100013251
 BETSY B. WOOLRIDGE, CLERK



PLAT SHOWING
 PARCEL R-4 AND
 HALFWAY CREEK WEST
 BEING A SUBDIVISION OF
 TAX PARCEL 5030100001
 PROPERTY OF
 BUSCH PROPERTIES, INC.
 ROBERTS DISTRICT, JAMES CITY COUNTY, VIRGINIA

DATE: 4/08/10 SCALE: 1"=200'

SHEET 3 OF 4

