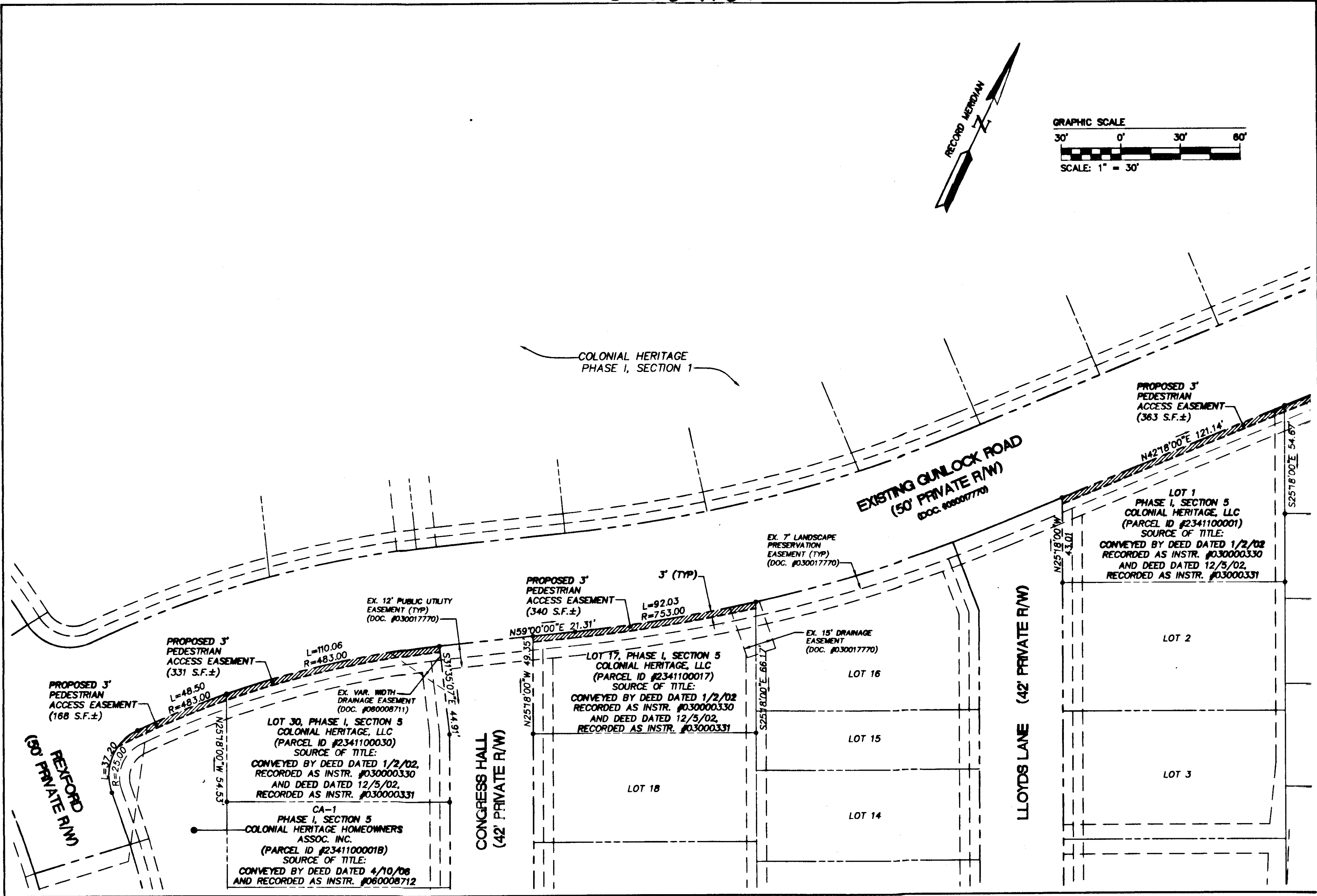
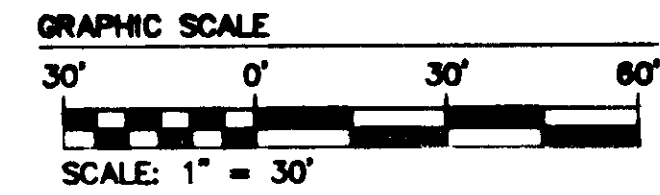
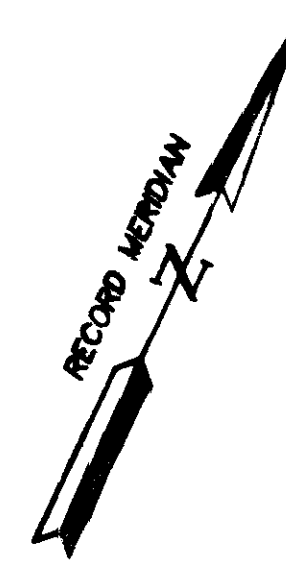
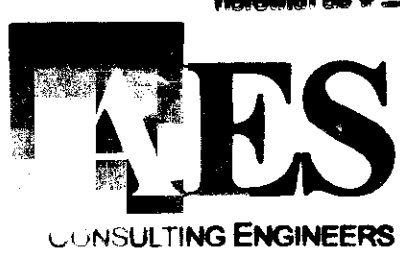
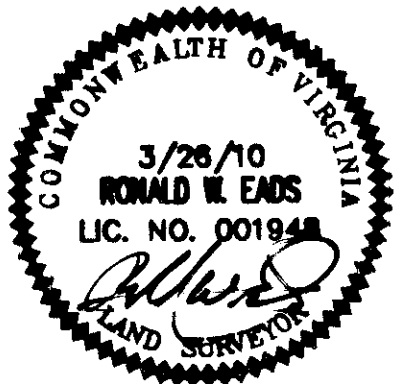


100007186



City of Williamsburg & County of James City Circuit Court. This PLAT was recorded on <i>9 April 2010</i> at <i>12:33</i> AM/PM PB PG DOCUMENT # <i>100007186</i> BETSY B. WOOLRIDGE, CLERK <i>Betsy B. Woolridge</i> Clerk	Reviewed By
Rev.	Date



5348 Old Towne Road, Suite 1
Williamsburg, Virginia 23188
Phone: (757) 253-0040
Fax: (757) 220-8994
www.wesve.com

Hampton Roads | Central Virginia | Middle Peninsula

PLAT SHOWING PROPOSED 3' PEDESTRIAN ACCESS EASEMENT
PHASE I, SECTION 1 & PHASE I, SECTION 5
"COLONIAL HERITAGE"
OWNED BY: COLONIAL HERITAGE, LLC AND
COLONIAL HERITAGE HOMEOWNERS ASSOCIATION, INC.

STONEHOUSE DISTRICT JAMES CITY COUNTY VIRGINIA

Project Contacts:	RWE
Project Number:	8881-18-P02
Scale:	1"=30'
Date:	03/28/10
Sheet Number	2 of 2