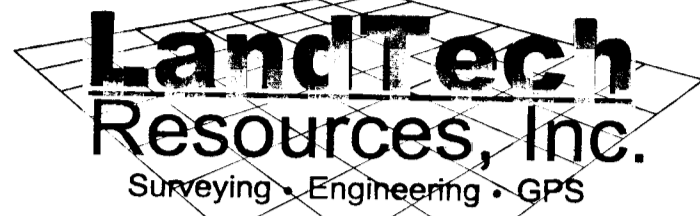


100006479

PLAT SHOWING BOUNDARY LINE ADJUSTMENT  
AND CONSERVATION EASEMENT AREA  
ADJUSTMENT LOCATED IN  
**FENWICK HILLS SUBDIVISION**  
STONEHOUSE DISTRICT

JAMES CITY COUNTY VIRGINIA  
DATE: 12/21/09 JOB# 06-259 SCALE 1"=200'  
SHEET 5 OF 5



205-E Bulifante Blvd., Williamsburg, VA 23188  
Phone: (757) 565-1677 Fax: (757) 565-0782  
web: landtechresources.com



City of Williamsburg & County of James City  
Circuit Court: This PLAT was recorded on  
**3-31-2010**  
at **1:21** AM/PM, PG **1**  
DOCUMENT # **100006479**  
BETSY B. WOOLRIDGE, CLERK  
*Betsy B. Woolridge* Clerk

5 Large/Small Plates Recorded  
herewith as # **100006479**

PROPERTY LINE TABLE

LINE	BEARING	DISTANCE
L1	N 13°57'24" W	123.00'
L2	N 22°47'18" E	170.98'
L3	N 82°33'38" E	167.53'
L4	S 29°33'49" E	38.71'
L5	S 18°25'51" W	108.86'
L10	N 18°25'37" E	110.51'
L11	S 48°34'23" E	176.32'
L12	S 59°04'23" E	169.82'
L13	S 26°04'23" E	104.18'
L14	S 44°55'37" W	101.91'
L15	S 58°34'23" E	129.00'
L16	N 31°25'34" E	127.61'
L17	N 53°04'23" W	88.41'
L18	N 26°04'23" W	69.86'
L19	N 32°34'23" W	242.40'
L20	N 09°29'41" W	100.54'
L21	N 67°34'23" W	141.29'
L22	N 35°34'23" W	66.81'
L23	N 24°25'37" E	97.36'
L24	N 78°34'23" W	73.00'
L25	N 48°34'23" W	65.00'
L26	N 29°25'37" E	81.88'
L27	N 44°25'37" E	158.68'
L28	S 45°04'23" E	110.24'
L29	N 18°22'58" W	85.37'
L30	N 09°55'37" E	126.54'
L31	N 52°55'37" E	68.50'
L32	S 23°34'23" E	127.22'
L33	N 23°34'23" W	128.25'
L34	N 86°25'37" E	105.52'
L35	S 61°34'23" E	128.36'
L36	S 16°34'23" E	95.29'
L37	N 67°25'37" E	137.86'
L38	N 32°04'23" W	205.63'
L39	N 37°25'37" E	163.45'
L40	S 33°34'23" E	108.45'
L41	N 26°04'23" W	115.46'
L42	S 89°55'37" W	25.66'
L43	S 67°47'17" W	89.07'
L44	N 57°24'52" W	144.21'
L45	N 07°35'02" W	158.07'
L46	N 38°40'03" E	72.28'
L47	N 43°51'16" E	54.63'
L48	S 85°35'54" E	35.21'
L49	N 64°42'01" E	75.85'
L50	S 20°03'54" E	17.00'
L51	N 80°05'16" E	103.26'
L52	S 86°42'09" E	114.63'
L53	S 57°34'24" E	99.74'
L54	S 36°55'53" E	151.82'
L55	N 88°51'26" E	98.74'
L56	S 57°34'24" E	30.23'
L57	N 32°25'36" E	75.81'
L58	S 57°34'24" E	71.00'
L59	S 16°27'13" E	51.77'
L60	S 32°25'36" W	34.52'
L61	S 57°34'24" E	80.00'
L62	S 32°25'36" W	7.25'
L63	S 57°34'24" E	83.99'
L64	N 03°11'34" E	94.72'
L65	N 11°42'35" E	63.04'
L66	N 05°52'01" E	41.66'
L67	N 25°56'14" E	79.50'
L68	N 60°32'50" E	33.49'
L69	N 76°34'24" W	32.24'
L70	N 20°32'49" W	128.37'

PROPERTY LINE TABLE

LINE	BEARING	DISTANCE
L70	N 20°32'49" W	128.37'
L71	N 58°55'36" E	124.85'
L72	S 57°34'24" E	213.29'
L73	S 35°49'38" W	10.00'
L74	S 34°58'50" E	106.83'
L75	S 14°58'54" E	37.76'
L76	N 75°01'06" E	75.00'
L77	S 14°58'54" E	96.56'
L78	S 23°04'03" W	51.57'
L79	N 86°41'42" W	165.41'
L80	S 03°18'18" W	20.00'
L81	S 86°41'42" E	141.52'
L82	S 14°44'51" W	76.52'
L83	S 18°18'45" W	214.42'
L84	S 49°47'26" W	193.16'
L85	S 31°59'23" E	40.00'
L86	S 38°32'08" W	51.27'
L87	S 04°43'40" E	39.04'
L88	S 17°28'14" W	80.03'
L89	S 68°12'55" W	57.04'
L90	N 73°55'37" E	123.73'
L91	S 09°34'23" E	97.72'
L92	S 07°25'37" W	228.69'
L93	S 34°48'40" W	400.60'
L94	S 64°13'37" W	97.91'
L95	S 60°01'37" W	101.64'
L96	S 22°58'23" E	109.19'
L97	S 56°25'38" W	111.43'
L98	S 20°34'23" E	70.62'
L128	S 08°34'22" E	70.00'
L129	N 42°25'36" E	50.00'
L130	N 60°13'37" E	131.39'
L131	S 42°34'22" E	89.18'
L132	N 47°25'38" E	66.94'
L133	S 57°34'26" E	155.17'
L134	S 32°25'34" W	82.62'
L135	S 57°34'26" E	244.51'

CURVE TABLE

CURVE	RADIUS	ARC LENGTH	CHORD LENGTH	CHORD BEARING	DELTA ANGLE	TANGENT
C1	55.00'	10.76'	10.74'	S 50°08'31" E	11°12'32"	5.40'
C2	423.22'	99.72'	99.49'	S 51°49'23" E	13°30'00"	50.09'
C3	55.00'	73.91'	68.48'	N 27°04'23" W	77°00'00"	43.75'
C4	55.00'	20.47'	20.35'	N 55°45'54" E	21°19'25"	10.36'
C5	55.00'	7.20'	7.19'	N 60°10'37" E	7°30'00"	3.60'
C6	55.00'	41.17'	40.22'	N 08°00'47" W	42°52'46"	21.60'
C7	352.05'	29.42'	29.41'	S 24°10'39" E	4°47'14"	14.72'
C8	352.05'	27.66'	27.65'	S 28°49'23" E	4°30'00"	13.84'
C9	325.27'	85.16'	84.91'	S 23°34'22" E	15°00'00"	42.82'
C10	28497.89'	874.84'	874.81'	N 57°00'24" W	1°45'32"	437.45'
C11	362.49'	57.55'	57.49'	S 17°06'04" E	9°05'46"	28.83'
C12	352.05'	23.49'	23.48'	S 10°29'04" E	3°49'21"	11.75'
C13	387.06'	9.65'	9.65'	N 09°17'15" W	1°25'42"	4.82'
C14	387.06'	253.81'	249.29'	S 28°47'14" E	37°34'20"	131.66'
C15	337.06'	104.71'	104.29'	N 38°40'24" W	17°48'00"	52.78'
C16	55.00'	38.39'	37.62'	N 06°34'23" W	39°59'51"	20.02'

CONSERVATION EASEMENT AREA TABULATION

AREA NO.	ADDITIONAL EASEMENT	VACATED EASEMENT
1	60,954 S.F.	13,861 S.F.
2	926 S.F.	8,252 S.F.
3	2,724 S.F.	21,852 S.F.
4	975 S.F.	18 S.F.
5	13,875 S.F.	1,061 S.F.
6	63,819 S.F.	769 S.F.
TOTAL	143,273 S.F.	45,813 S.F.

EXISTING CONSERVATION EASEMENT **±30.393 AC.**  
EASEMENT AREA VACATED **1.052 AC.**  
ADDITIONAL EASEMENT AREA **3.289 AC.**  
NEW TOTAL CONSERVATION EASEMENT AREA **±32.630 AC.**

LINE TABLE (EXSTINGUISHED LINES)

LINE	BEARING	DISTANCE
L100	N 44°41'14" W	153.93'
L101	S 43°25'37" W	162.62'
L102	N 79°01'44" W	157.20'
L103	N 32°34'23" W	120.58'
L104	N 12°25'37" E	169.49'
L105	N 58°25'37" E	194.49'
L106	N 72°28'45" E	121.79'
L107	S 85°34'23" E	124.64'
L108	S 45°34'23" E	263.96'
L109	S 57°34'23" E	348.64'
L110	S 52°52'50" E	102.49'
L111	N 18°25'37" E	195.48'
L112	N 72°34'23" W	139.59'
L113	N 07°25'37" E	102.09'
L114	N 63°25'37" E	59.59'
L115	N 76°34'23" W	64.45'
L116	N 19°04'23" W	95.14'
L117	N 58°55'37" E	156.79'
L118	S 57°34'23" E	360.76'
L119	S 29°34'23" E	79.47'
L120	S 04°34'23" E	117.48'
L121	N 85°34'23" W	121.24'
L122	S 08°07'34" W	20.04'
L123	S 85°34'23" E	131.61'
L124	S 17°25'37" W	365.58'
L125	S 24°55'37" W	155.00'
L126	S 50°47'24" W	111.51'
L127	S 63°25'37" W	132.88'

EASEMENT LINE TABLE

LINE	BEARING	DISTANCE
L136	N 32°25'36" E	11.60'
L137	S 58°09'00" E	43.57'
L138	S 49°11'06" E	55.90'
L139	S 19°48'32" W	3.98'
L140	N 52°54'50" E	39.33'
L141	S 37°51'02" E	40.74'