

100006479

PLAT SHOWING BOUNDARY LINE ADJUSTMENT AND CONSERVATION EASEMENT AREA ADJUSTMENT LOCATED IN FENWICK HILLS SUBDIVISION STONEHOUSE DISTRICT

JAMES CITY COUNTY VIRGINIA DATE: 12/21/09 JOB# 06-259 SCALE 1"=200' SHEET 2 OF 5



205-E Bulifante Blvd., Williamsburg, VA 23188 Phone: (757) 565-1677 Fax: (757) 565-0782 web: landtechresources.com



THIS SHEET IS INTENDED TO SHOW THE BOUNDARY LINE ADJUSTMENTS

LEGEND

EX. CONSERVATION EASEMENT



N/F A.D. SLATER, JR. D.B. 140, PG. 130

City of Williamsburg & County of James City Circuit Court: This PLAT was recorded on at 1:37 PM on 12/21/09. DOCUMENT # 100006479. BETSY B. WOOLRIDGE, CLERK

5 Large Format Plats Recorded herewith as 100006479

INTERSTATE 64 (E.B.L.) C10

PARCEL B ADJUSTED AREA ±32.63

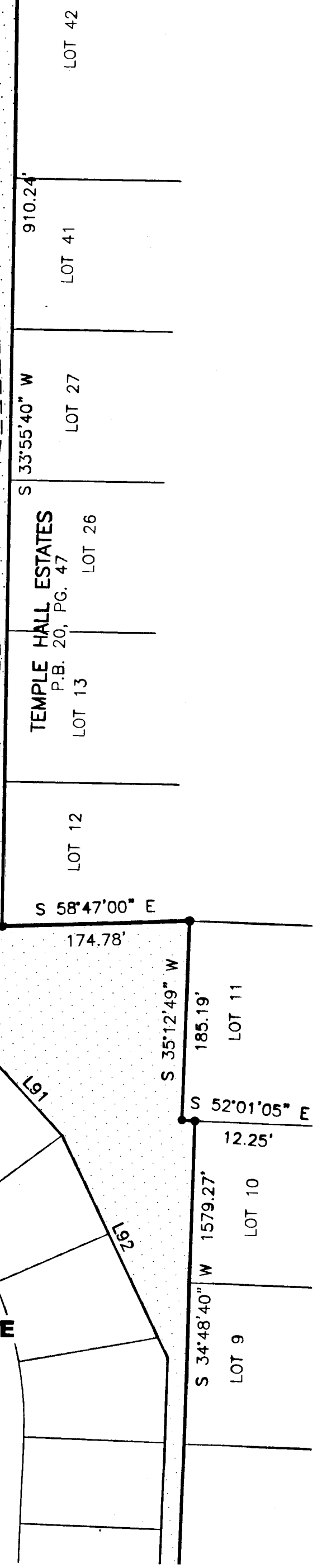
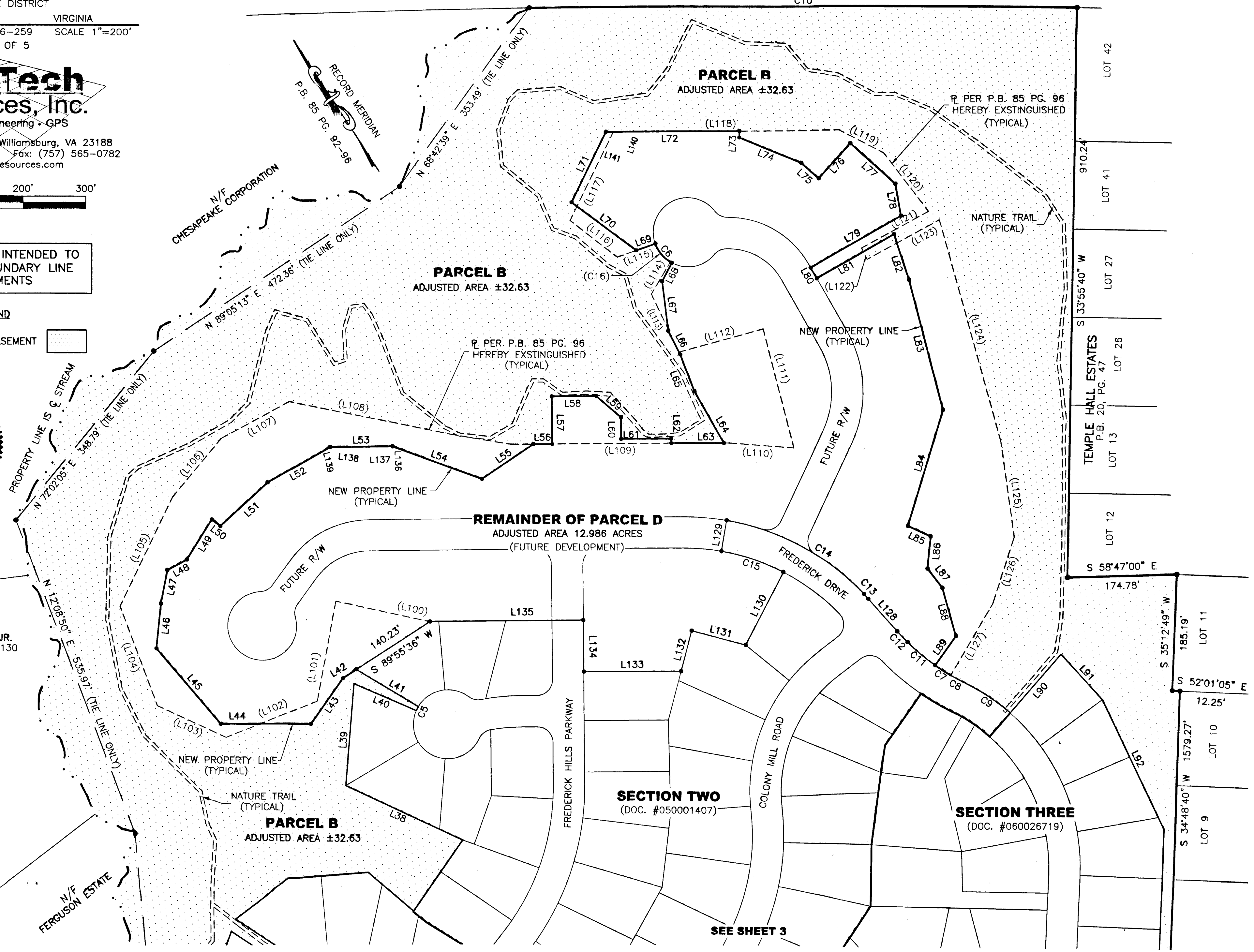
PARCEL B ADJUSTED AREA ±32.63

REMAINDER OF PARCEL D ADJUSTED AREA 12.986 ACRES (FUTURE DEVELOPMENT)

PARCEL B ADJUSTED AREA ±32.63

SECTION TWO (DOC. #050001407)

SECTION THREE (DOC. #060026719)



SEE SHEET 3