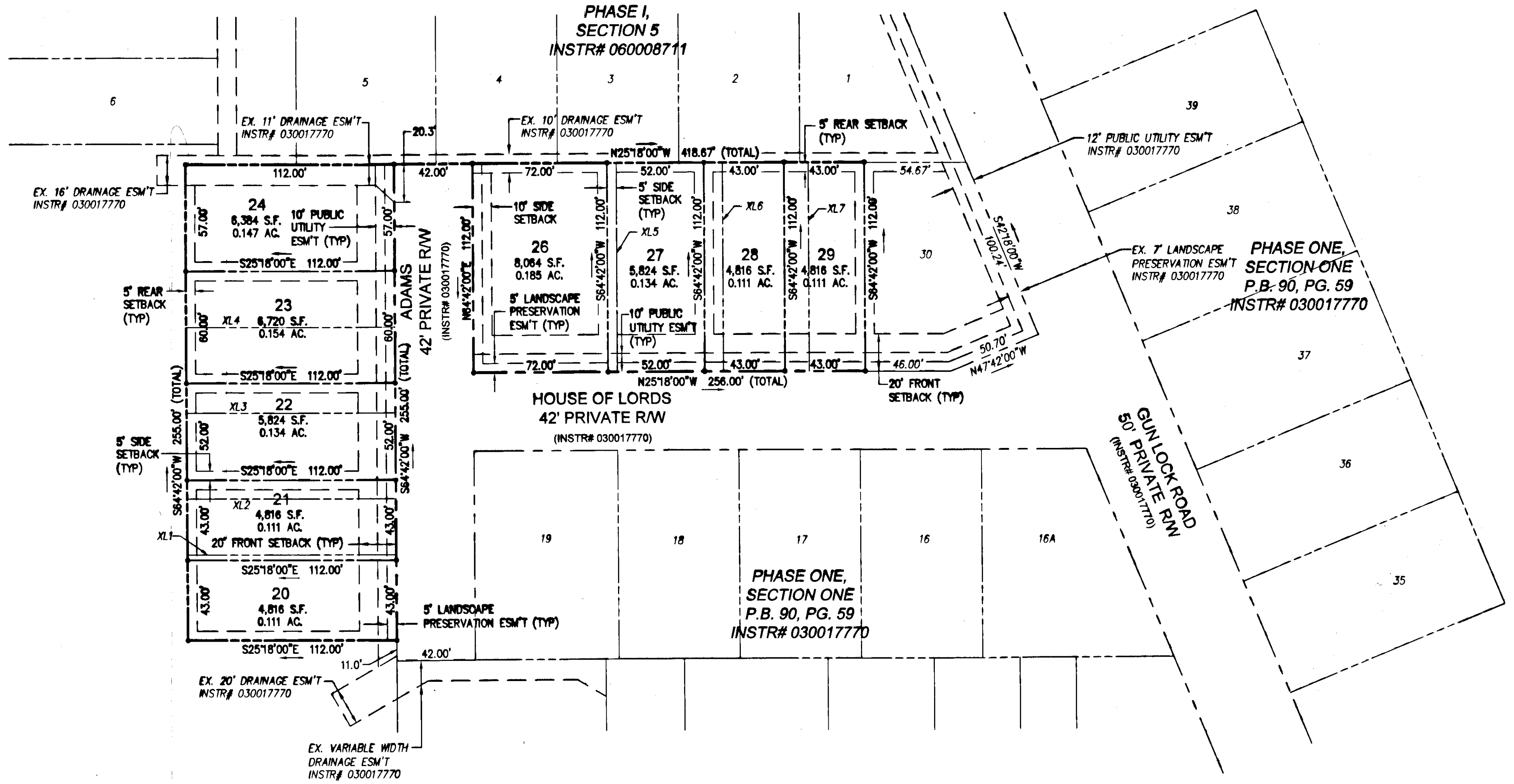


100001575

S:\Users\jeb1\105-MODEL\Map\TaskModel Court.BLA Plot.BLA Plot\030017770.Lots 20-24.dwg, 1/11/2010 2:25:12 PM, mhc-appman



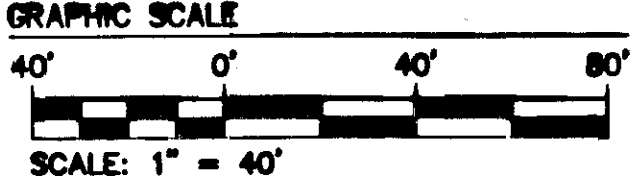
PROPERTY LINES HEREBY EXTINGUISHED

LINE	BEARING	DISTANCE
XL1	S25°18'00"E	112.00'
XL2	S25°18'00"E	112.00'
XL3	S25°18'00"E	112.00'
XL4	S25°18'00"E	112.00'
XL5	N64°42'00"W	112.00'
XL6	N64°42'00"W	112.00'
XL7	N64°42'00"W	112.00'

LEGEND  
 — IRON ROD SET  
 ESM'T EASEMENT  
 CA COMMON OPEN SPACE



2. Large/Bound- Plat(s) Recorded  
 by width as # 100001575



5248 Old Towne Road, Suite 1  
 Williamsburg, Virginia 23188  
 (757) 253-0040  
 Fax (757) 220-8994

WILLIAMSBURG • RICHMOND • GLOUCESTER • FREDERICKSBURG

PLAT OF BOUNDARY LINE ADJUSTMENT &  
 BOUNDARY LINE EXTINGUISHMENT  
**COLONIAL HERITAGE**  
 PHASE ONE, SECTION ONE  
 LOTS 20 THRU 24 & LOTS 26 THRU 29  
 STONEHOUSE DISTRICT JAMES CITY COUNTY VIRGINIA



City of Williamsburg & County of James City Circuit Court. This PLAT was recorded on 28 January 2010 at 3:35 AM/PM. PG. — DOCUMENT # 100001575 BETSY B. WOOLRIDGE, CLERK <i>Betsy B. Woolridge</i> Clerk			
No.	DATE	REVISION / COMMENT / NOTE	SDC REVIEWED BY
1	8/04/09	REVISED PER COUNTY COMMENTS	SDC REVIEWED BY

Designed AES	Drawn SDC
Scale 1"=40'	Date 4/23/09
Project No. 8881-06	
Drawing No. 2	