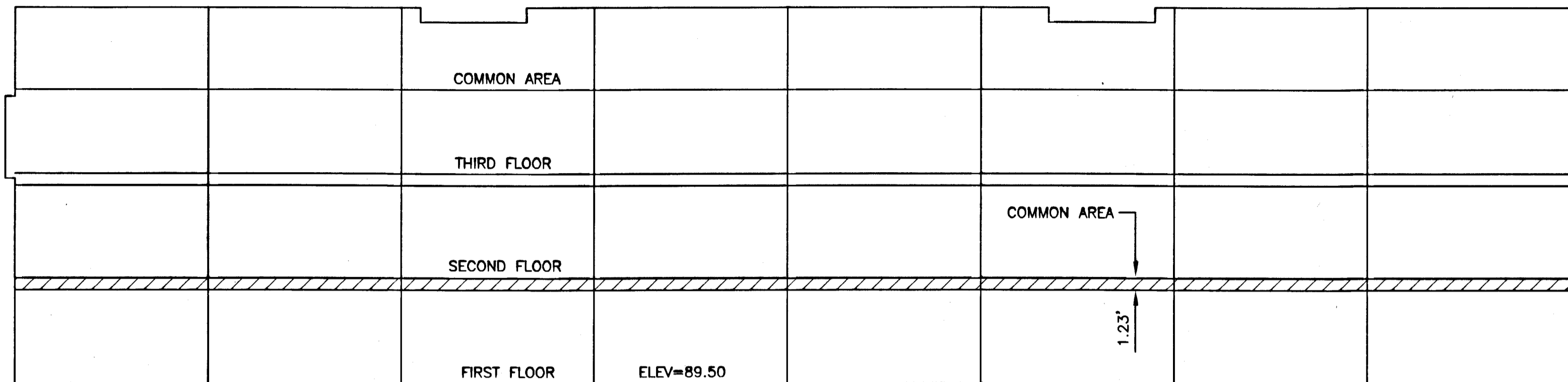
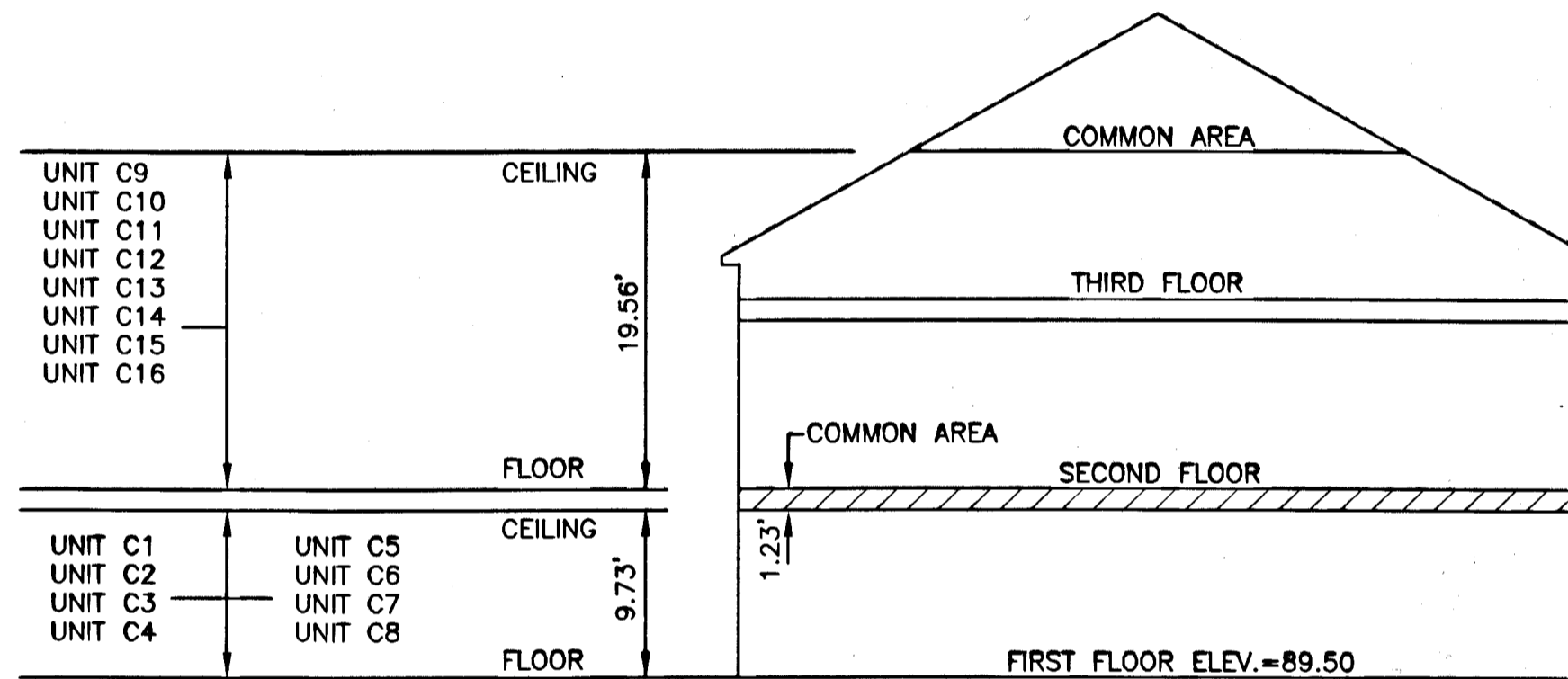
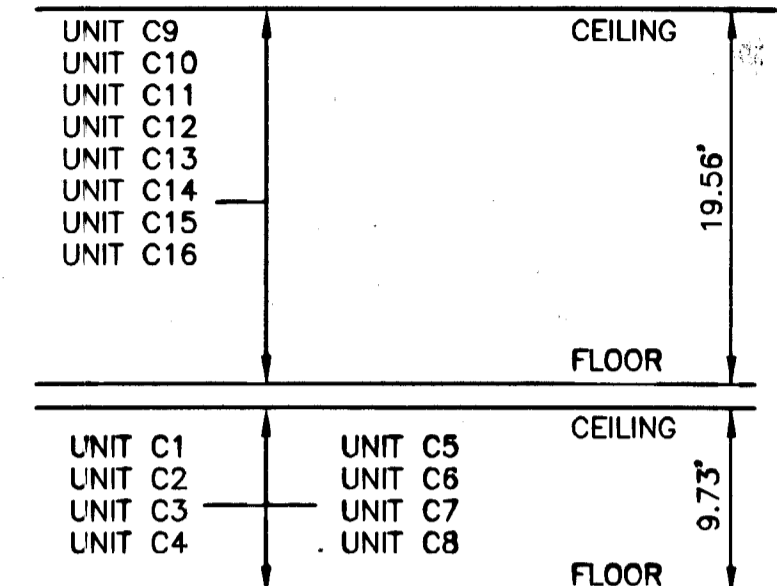


093107



FRONT ELEVATION

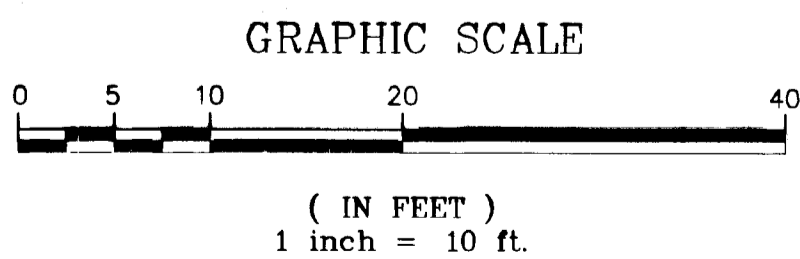


UNIT HORIZONTAL BOUNDARY

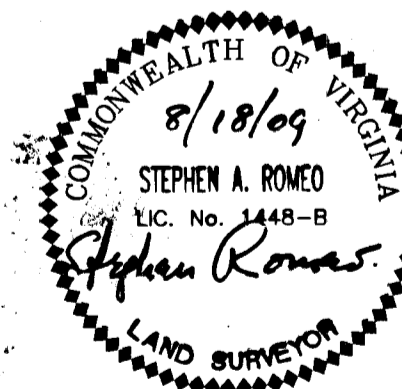
PLANS OF UNITS  
 BUILDING C  
 PHASE TWO, CITY GREEN  
 A CONDOMINIUM FOR  
 PROMETHEUS INVESTMENTS, INC.

CITY OF WILLIAMSBURG, VIRGINIA  
 SCALE: 1" = 10' DATE: 08/18/09

SHEET 3 OF 3



City of Williamsburg & County of James City  
 Circuit Court: This PLAT was recorded on  
 21 October 2009  
 at 2:28 AM/PM. PG. —  
 DOCUMENT # 093107  
 BETSY B. WOOLRIDGE, CLERK  
 Betsy B. Woolridge Clerk



3 Large/Small Plat(s) Recorded  
 herewith as # 093107

**LANDMARK**  
**DESIGN GROUP**  
 Engineers • Planners • Surveyors  
 Landscape Architects • Environmental Consultants

4029 Ironbound Road  
 Suite 100  
 Williamsburg, VA 23188  
 Tel. (757) 253-2975  
 Fax (757) 229-0049  
 Email: lmdg@landmarkdg.com  
 One Columbus Center  
 Suite 1100  
 Virginia Beach, VA 23462  
 Tel. (757) 473-2000  
 Fax (757) 497-7933  
 Email: lmdg@landmarkdg.com