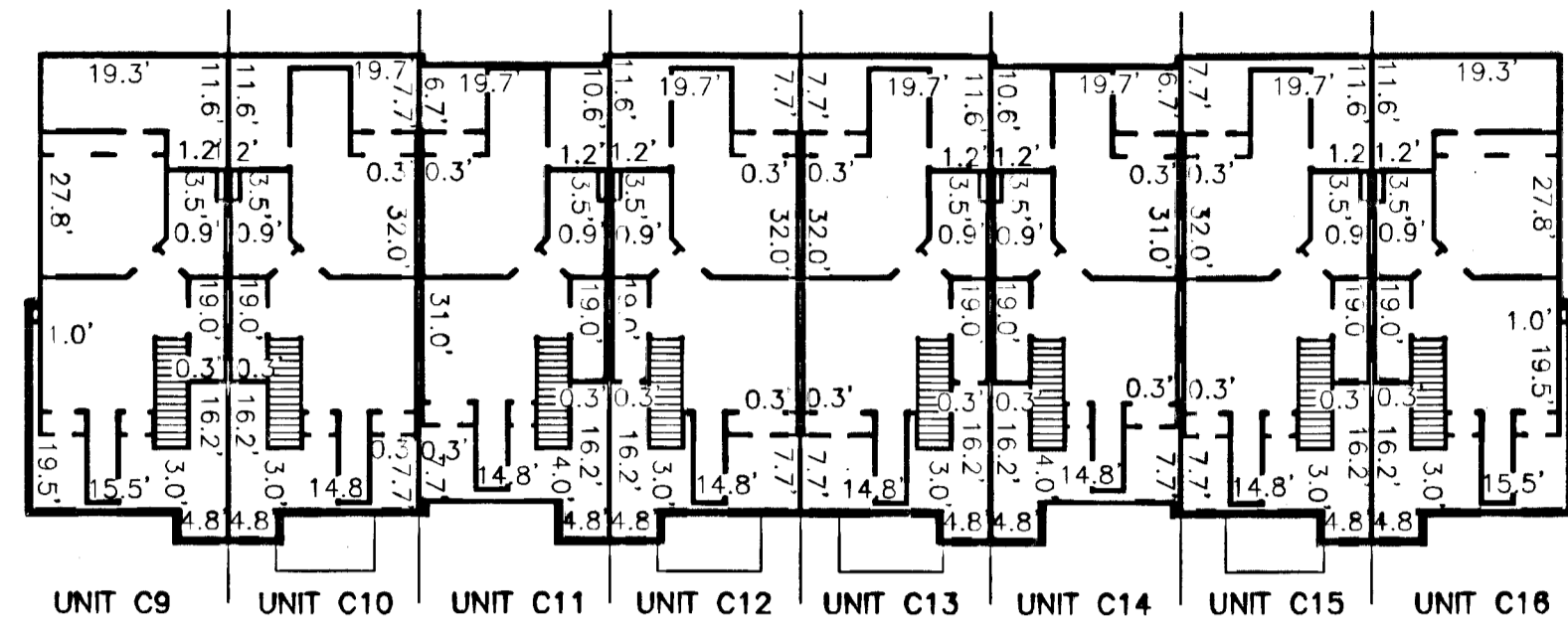
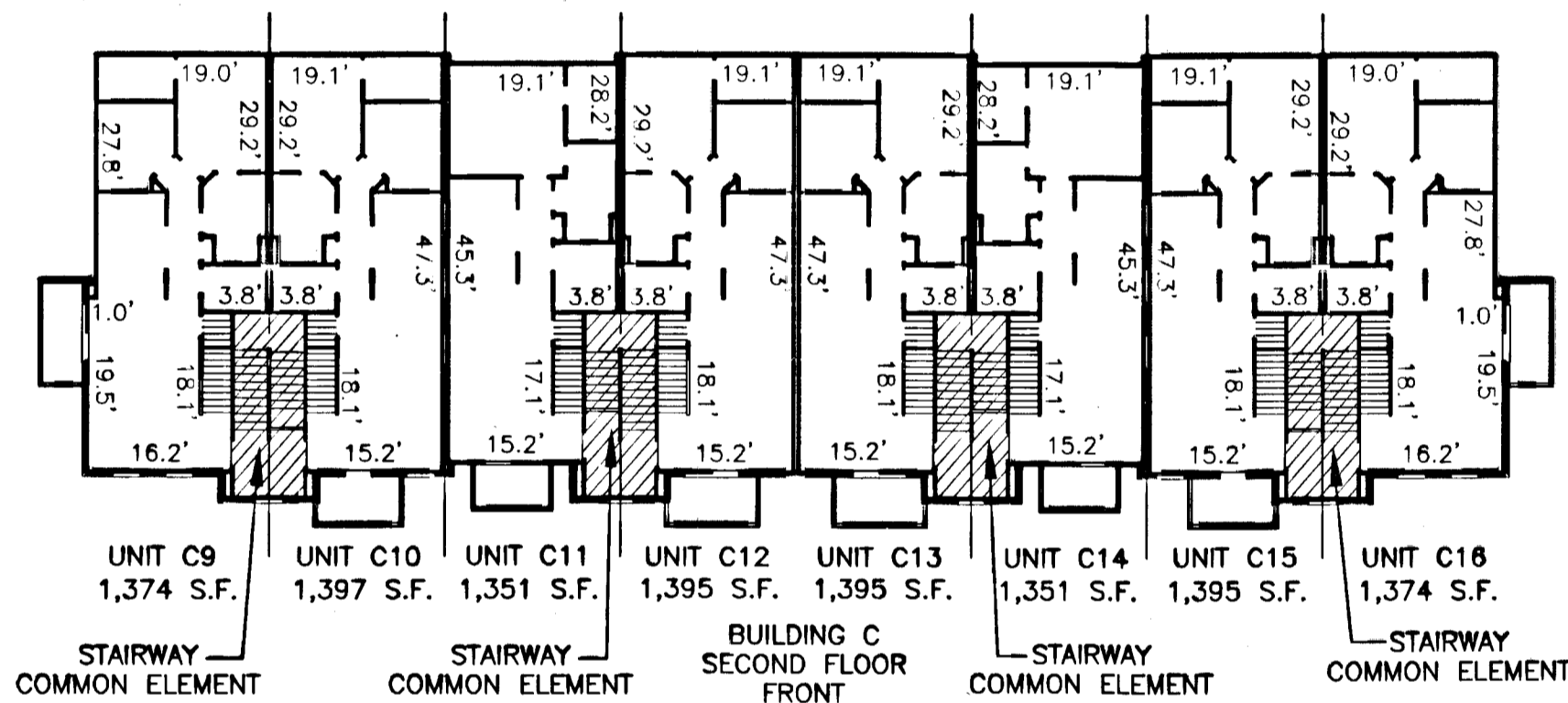


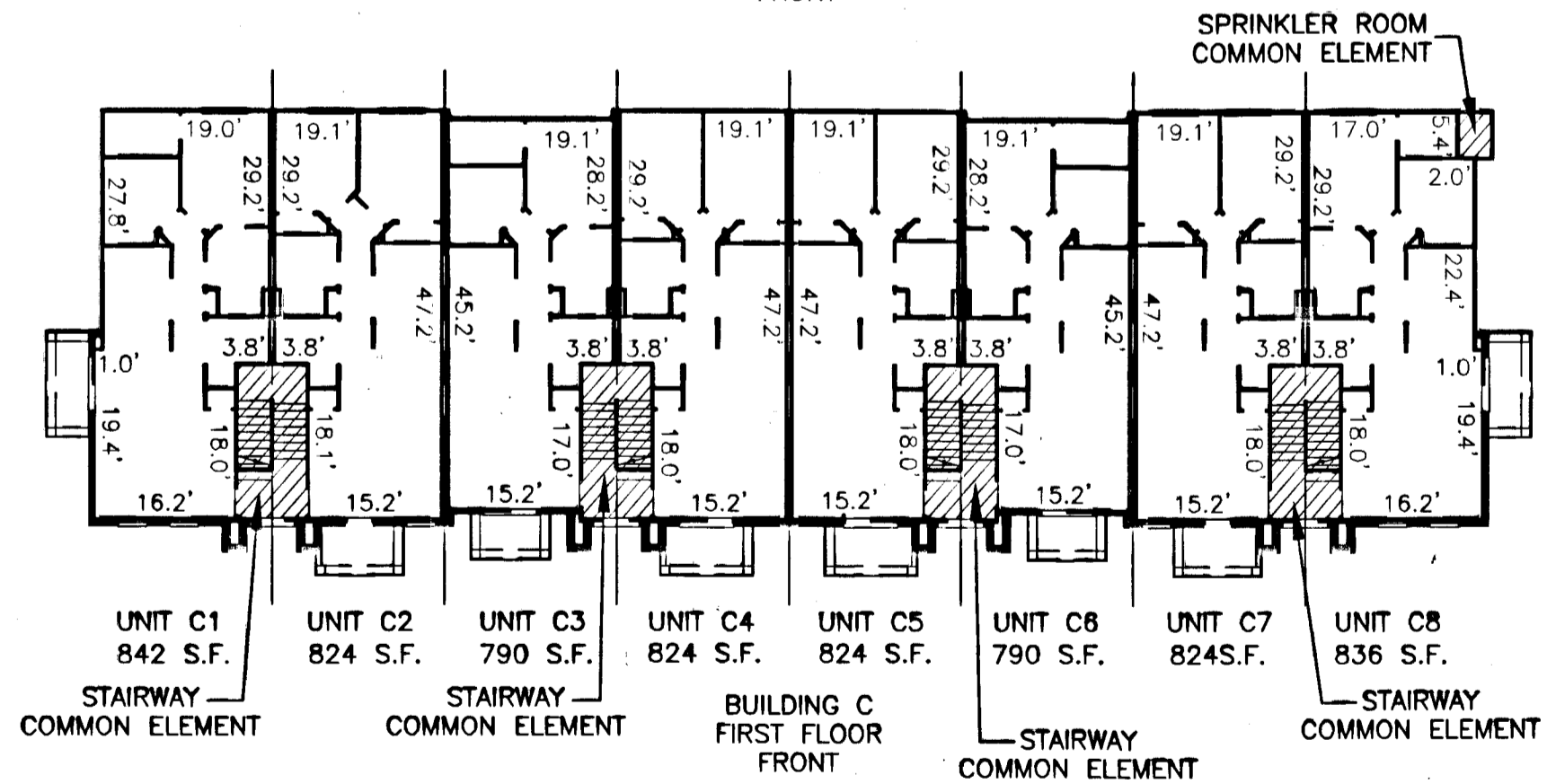
093107



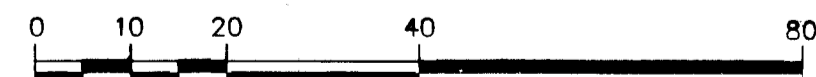
BUILDING C
THIRD FLOOR
FRONT



BUILDING C
SECOND FLOOR
FRONT



GRAPHIC SCALE



(IN FEET)
1 inch = 20 ft.

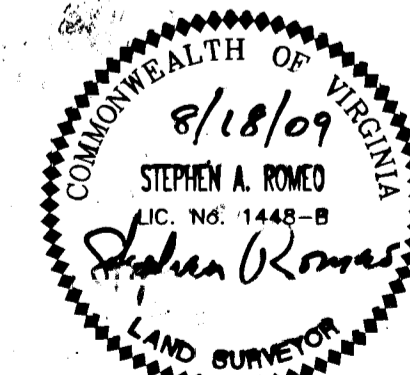
UNIT NUMBER	TAX MAP NUMBER	STREET ADDRESS	ASSIGNED PARKING SPACE
C1	434-22-02-001	1210 RICHMOND RD. UNIT 1	C1
C2	434-22-02-002	1210 RICHMOND RD. UNIT 2	C2
C3	434-22-02-003	1210 RICHMOND RD. UNIT 3	C3
C4	434-22-02-004	1210 RICHMOND RD. UNIT 4	C4
C5	434-22-02-005	1210 RICHMOND RD. UNIT 5	C5
C6	434-22-02-006	1210 RICHMOND RD. UNIT 6	C6
C7	434-22-02-007	1210 RICHMOND RD. UNIT 7	C7
C8	434-22-02-008	1210 RICHMOND RD. UNIT 8	C8
C9	434-22-02-009	1210 RICHMOND RD. UNIT 9	C9
C10	434-22-02-010	1210 RICHMOND RD. UNIT 10	C10
C11	434-22-02-011	1210 RICHMOND RD. UNIT 11	C11
C12	434-22-02-012	1210 RICHMOND RD. UNIT 12	C12
C13	434-22-02-013	1210 RICHMOND RD. UNIT 13	C13
C14	434-22-02-014	1210 RICHMOND RD. UNIT 14	C14
C15	434-22-02-015	1210 RICHMOND RD. UNIT 15	C15
C16	434-22-02-016	1210 RICHMOND RD. UNIT 16	C16

PLANS OF UNITS
BUILDING C
PHASE TWO, CITY GREEN
A CONDOMINIUM FOR
PROMETHEUS INVESTMENTS, INC.

CITY OF WILLIAMSBURG, VIRGINIA
SCALE: 1" = 30' DATE: 08/18/09

SHEET 2 OF 3

City of Williamsburg & County of James City
Circuit Court. This PLAT was recorded on
21 October 2009
at 2:28 AM/PM. PG. _____
DOCUMENT # 093107
BETSY B. WOOLRIDGE, CLERK
Betsy B. Woolridge Clerk



3 - Large/Small Plat(s) Recorded
herewith as # 093107



4029 Ironbound Road
Suite 100
Williamsburg, VA 23188
Tel. (757) 253-2975
Fax (757) 229-0049
Email: lmdg@landmarkdg.com

One Columbus Center
Suite 1100
Virginia Beach, VA 23462
Tel. (757) 473-2000
Fax (757) 497-7933
Email: lmdg@landmarkdg.com