

# 091813 DETAIL NOT TO SCALE

VIRGINIA STATE PLANE COORDINATE SYSTEM, SOUTH ZONE NAD1983(86)

N/F  
SAVANNAH GREEN HOMEOWNERS ASSOCIATION  
101 MEREDITH WAY  
INSTR# 021698  
P.B. 84, PG. 13-15  
TAX #281-12-00-051  
N 60°33'56" E 139.64'

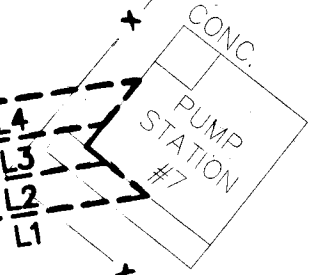
N/F  
BERGSTROM, PETER V. & CATHERINE  
245 TYLER BROOKS DRIVE  
D.B. 89, PG. 793  
TAX #311-02-00-104

N/F  
CITY OF WILLIAMSBURG  
99 PATRICK HENRY DRIVE  
D.B. 425, PG. 473  
P.B. 23, PG. 32  
TAX #311-02-00-A

EX 10' SANITARY SEWER EASEMENT

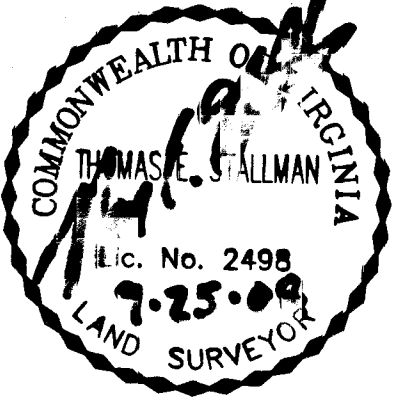
EX 15' HRSD EASEMENT  
D.B. 180, PG. 621

SEE DETAIL



LINE	BEARING	DISTANCE
L1	N 80°23'56" E	27.96'
L2	N 80°23'56" E	23.31'
L3	N 80°23'56" E	23.71'
L4	N 80°23'56" E	29.15'
L5	N 09°36'04" W	59.38'
L6	N 09°36'04" W	5.00'
L7	N 09°36'04" W	5.00'
L8	N 09°36'04" W	5.00'

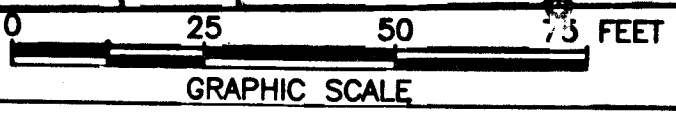
N/F  
BRANSCOMB VIRGINIA K.  
101 PATRICK HENRY DRIVE  
INSTR# 07A517  
P.B. 20, PG. 32  
TAX #311-01-00-210



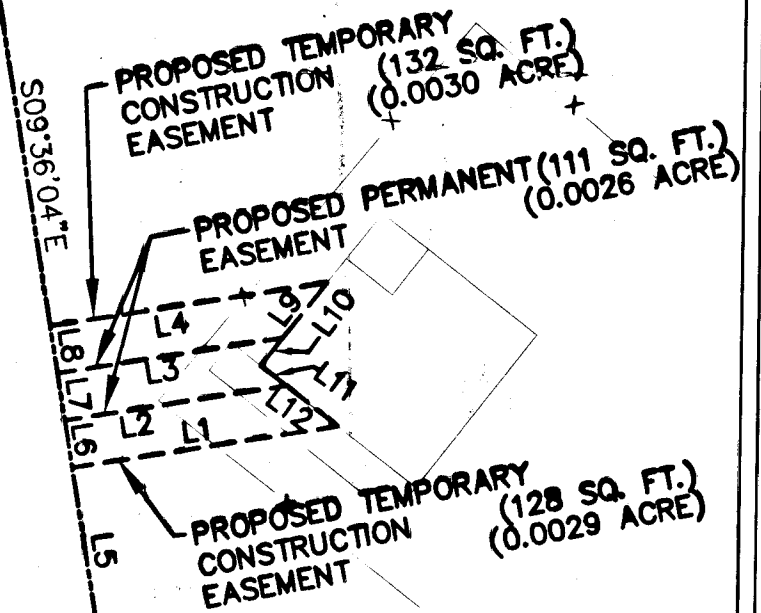
N/F  
CITY OF WILLIAMSBURG  
97 PATRICK HENRY DRIVE  
D.B. 425, PG. 473  
P.B. 23, PG. 32  
TAX #311-02-00-102A  
N 88°59'31" E 41.55'

N/F  
BURTON, KRELEN O & JOSEPH B. JR.  
243 TYLER BROOKS DRIVE  
INSTR# 072480  
P.B. 23, PG. 32  
TAX #311-02-00-102,103

N/F  
BURTON, KRELEN O & JOSEPH B. JR.  
243 TYLER BROOKS DRIVE  
INSTR# 072480  
P.B. 23, PG. 32  
TAX #311-02-00-102,103



City of Williamsburg & County of James City  
Circuit Court: This PLAT was recorded on  
at 10:52 AM/PM: PB 091813  
DOCUMENT # 091813  
BETSY B. WOOLRIDGE, CLERK  
Betsy B. Woolridge Clerk



L9	S 37°48'32" W	7.39'
L10	S 37°48'32" W	3.69'
L11	N 52°30'15" W	3.41'
L12	N 52°30'15" W	6.83'

Large/Small Plat(s) Recorded Herewith as # 091813

PLAT SHOWING EASEMENT FOR  
HAMPTON ROADS SANITATION DISTRICT  
INTERCEPTOR SYSTEM METERING PHASE IV  
METERING SITE MMPS-081  
FROM  
CITY OF WILLIAMSBURG, VIRGINIA  
WILLIAMSBURG, VIRGINIA

DRAWN BY: BHL	CHECKED BY: TES	NXL J.O.: 08-11-014L
PROJECT SCALE: 1" = 25'		DATE: 09/25/08



Engineers, Surveyors  
Construction Managers  
716 J. Clyde Morris Boulevard, Suite A  
Newport News, Virginia 23601  
757.596.4005