

090033631

NOTE:
THE LIMIT OF THE WETLAND RESTRICTED AREA IS SHOWN PER PLAT BY AES CONSULTING ENGINEERS TITLED "EXHIBIT A" PLAT SHOWING WETLAND RESTRICTED AREAS PREPARED FOR NEW TOWN ASSOCIATES DATED DECEMBER 5, 2006.

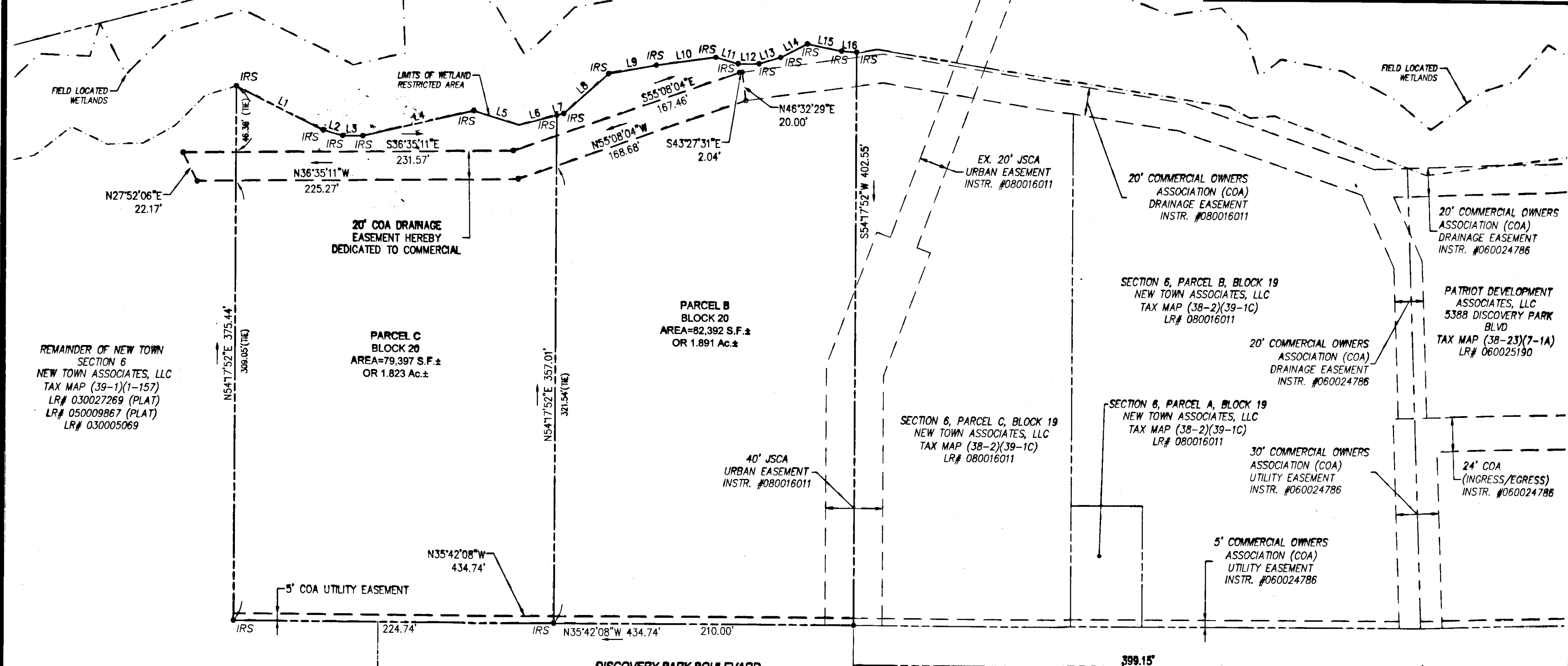
NOTE:
SEE INSTRUMENT #060024786 AND INSTRUMENT #080016011 FOR A FURTHER DESCRIPTION OF THE EASEMENTS.

NOTE:
COA - COMMERCIAL OWNERS ASSOCIATION EASEMENT (NEW TOWN COMMERCIAL ASSOCIATION)

REMAINDER OF NEW TOWN SECTION 5
NEW TOWN ASSOCIATES, LLC
TAX MAP (39-1)(1-157)
LR# 030027269 (PLAT)
LR# 050009867 (PLAT)
LR# 030005069

REMAINDER OF NEW TOWN SECTION 6
NEW TOWN ASSOCIATES, LLC
TAX MAP (39-1)(1-157)
LR# 030027269 (PLAT)
LR# 050009867 (PLAT)
LR# 030005069

LINE TABLE			LINE TABLE		
LINE	BEARING	LENGTH	LINE	BEARING	LENGTH
L1	N9°22'06"W	67.99'	L9	N46°04'00"W	34.11'
L2	N20°23'19"W	14.21'	L10	N43°29'34"W	42.04'
L3	N35°46'40"W	14.21'	L11	N20°16'52"W	16.21'
L4	N49°05'24"W	79.93'	L12	N36°10'18"W	14.58'
L5	N18°19'57"W	33.21'	L13	N51°55'00"W	15.93'
L6	N50°17'07"W	27.31'	L14	N63°09'34"W	21.11'
L7	N50°17'07"W	4.95'	L15	N24°09'44"W	24.44'
L8	N77°38'33"W	41.93'	L16	N32°08'59"W	10.67'



REMAINDER OF NEW TOWN SECTION 6
NEW TOWN ASSOCIATES, LLC
TAX MAP (39-1)(1-157)
LR# 030027269 (PLAT)
LR# 050009867 (PLAT)
LR# 030005069

PARCEL C
BLOCK 20
AREA=79.397 S.F.±
OR 1.823 Ac.±

PARCEL B
BLOCK 20
AREA=82,392 S.F.±
OR 1.891 Ac.±

SECTION 6, PARCEL C, BLOCK 19
NEW TOWN ASSOCIATES, LLC
TAX MAP (38-2)(39-1C)
LR# 080016011

SECTION 6, PARCEL A, BLOCK 19
NEW TOWN ASSOCIATES, LLC
TAX MAP (38-2)(39-1C)
LR# 080016011

30' COMMERCIAL OWNERS ASSOCIATION (COA) UTILITY EASEMENT INSTR. #060024786

5' COMMERCIAL OWNERS ASSOCIATION (COA) UTILITY EASEMENT INSTR. #060024786

PATRIOT DEVELOPMENT ASSOCIATES, LLC
5388 DISCOVERY PARK BLVD
TAX MAP (38-23)(7-1A)
LR# 060025190

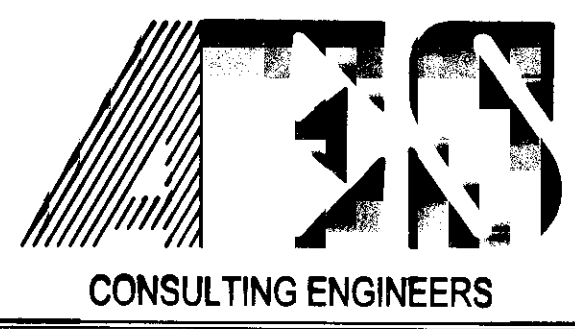
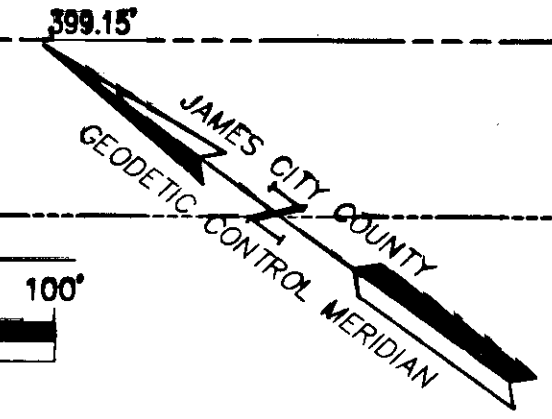
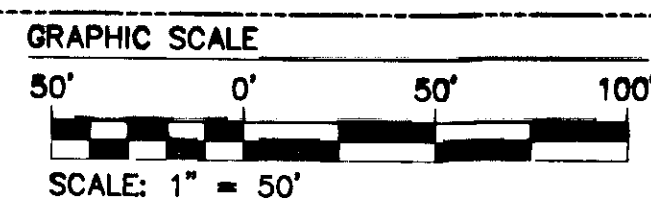
20' COMMERCIAL OWNERS ASSOCIATION (COA) DRAINAGE EASEMENT INSTR. #060024786

EX. 20' JSCA URBAN EASEMENT INSTR. #080016011

20' COMMERCIAL OWNERS ASSOCIATION (COA) DRAINAGE EASEMENT INSTR. #080016011

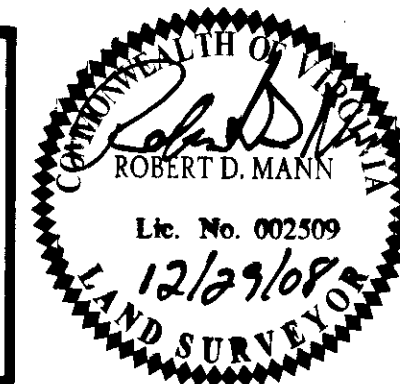
City of Williamsburg & County of James City
Circuit Court: This PLAT was recorded on
12 November 2009
at 3:39 AM/PM, PG PG
DOCUMENT # 090033631
BETSY B. WOOLRIDGE, CLERK
Betsy B. Woolridge Clerk

2. Large/Small Plat(s) Recorded
Document # 090033631



5248 Olde Towne Road, Suite 1
Williamsburg, Virginia 23188
(757) 253-0040
Fax (757) 220-8994

PLAT OF SUBDIVISION
PARCELS B AND C
BLOCK 20, SECTION 6
NEW TOWN
OWNED BY NEW TOWN ASSOCIATES, LLC.
BERKELEY DISTRICT JAMES CITY COUNTY VIRGINIA



No.	DATE	REVISION / COMMENT / NOTE	REVIEWED BY	REVIEWED BY
1	12/29/08	REVISED PER COUNTY COMMENTS	RDM	RDM

Designed RDS/REC	Drawn SDC
Scale 1"=50'	Date 11/10/08
Project No. 6632-06	
Drawing No. 2 of 2	

S:\Jobs\6632\156129-Block 20\dwg\SurfPlat\6632-S6-20 Block BC-Sheet 2.dwg, 12/30/2008 1:04:53 PM, stephen.cooke

WILLIAMSBURG • RICHMOND • GLOUCESTER • FREDERICKSBURG