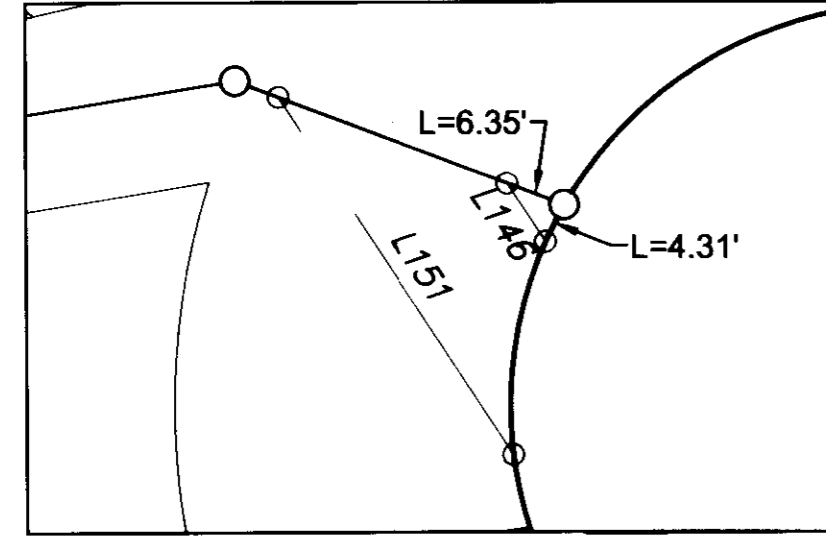
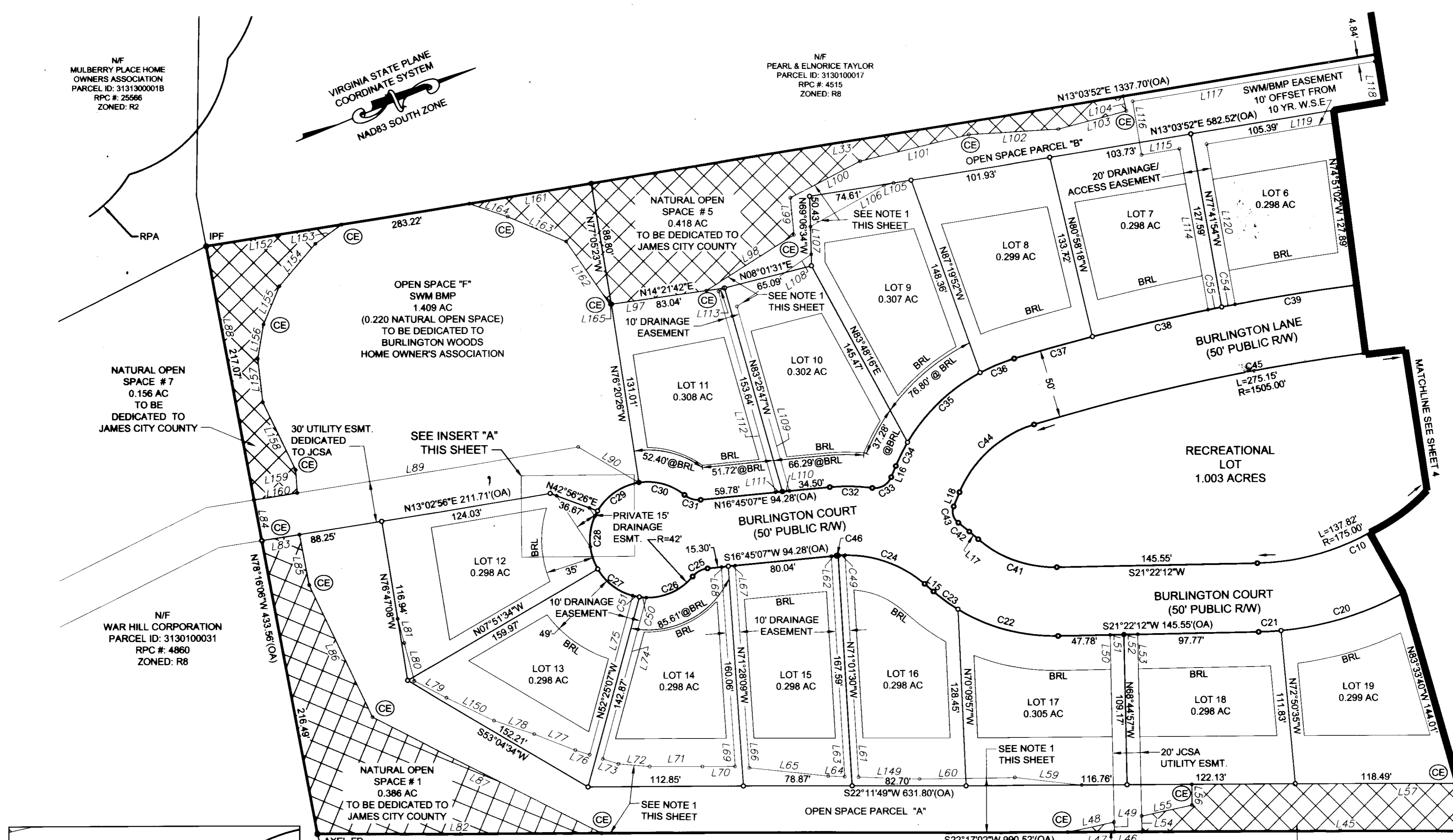


090027398

N/F  
MULBERRY PLACE HOME  
OWNERS ASSOCIATION  
PARCEL ID: 313130001B  
RPC #: 25566  
ZONED: R2

VIRGINIA STATE PLANE  
COORDINATE SYSTEM  
NAD83 SOUTH ZONE

N/F  
PEARL & ELMORICE TAYLOR  
PARCEL ID: 3130100017  
RPC #: 4516  
ZONED: R8



-INSERT "A"-  
1"=20'

City of Williamsburg & County of James City  
Circuit Court. This PLAT was recorded on  
5 October 2009  
at 11:17 AM, PB PC  
DOCUMENT # 090027398  
BETSY B. WOOLRIDGE, CLERK  
*Betsy B. Woolridge* Clerk

**OPEN SPACE AREAS:**

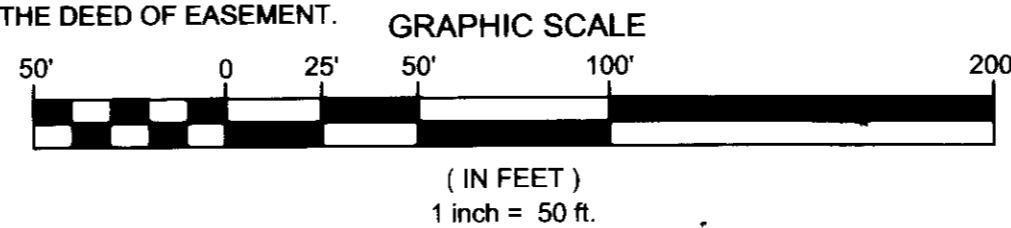
"A"	=	25,415 SF OR 0.5823 AC
"B"	=	23,633 SF OR 0.543 AC
"C"	=	9,074 SF OR 0.208 AC
"D"	=	3,216 SF OR 0.074 AC
"E"	=	4,509 SF OR 0.104 AC
"F"	=	51,795 SF OR 1.189 AC
<b>TOTAL</b>		<b>117,641 SF OR 2.701 AC</b>

**NATURAL OPEN SPACE AREAS:**

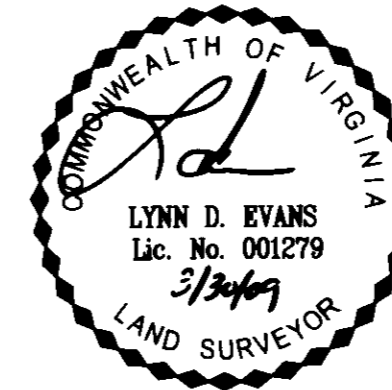
"1"	=	16,829 SF OR 0.386 AC
"2"	=	22,106 SF OR 0.507 AC
"3"	=	28,361 SF OR 0.651 AC
"4"	=	49,357 SF OR 1.133 AC
"5"	=	18,188 SF OR 0.418 AC
"6"	=	2,171 SF OR 0.050 AC
"7"	=	6,793 SF OR 0.156 AC
<b>TOTAL</b>		<b>143,805 SF OR 3.301 AC</b>

**NOTES:**

- VARIABLE WIDTH DRAINAGE EASEMENT.
- ALL DRAINAGE AND ACCESS EASEMENTS ARE PRIVATE UNLESS SPECIFIED OTHERWISE.
- NATURAL OPEN SPACE EASEMENTS SHALL REMAIN IN A NATURAL UNDISTURBED STATE EXCEPT FOR THOSE ACTIVITIES REFERENCED ON THE DEED OF EASEMENT.



N/F  
WAR HILL CORPORATION  
PARCEL ID: 3130100021  
RPC #: 4859  
ZONED: R2



SHEET C3

**Bury+Partners**  
ENGINEERING SOLUTIONS  
4095 Ironbound Road, Suite 200  
Williamsburg, Virginia 23188  
Tel. (575)229-1776 Fax (757)229-4663  
Bury+Partners, Inc. ©Copyright 2007

Checked By: LDE	Drawn By: KTL	Scale: 1"=50'	Date: 3/31/09	Project No.: 210770002
--------------------	------------------	------------------	------------------	---------------------------

REV. 3/30/09