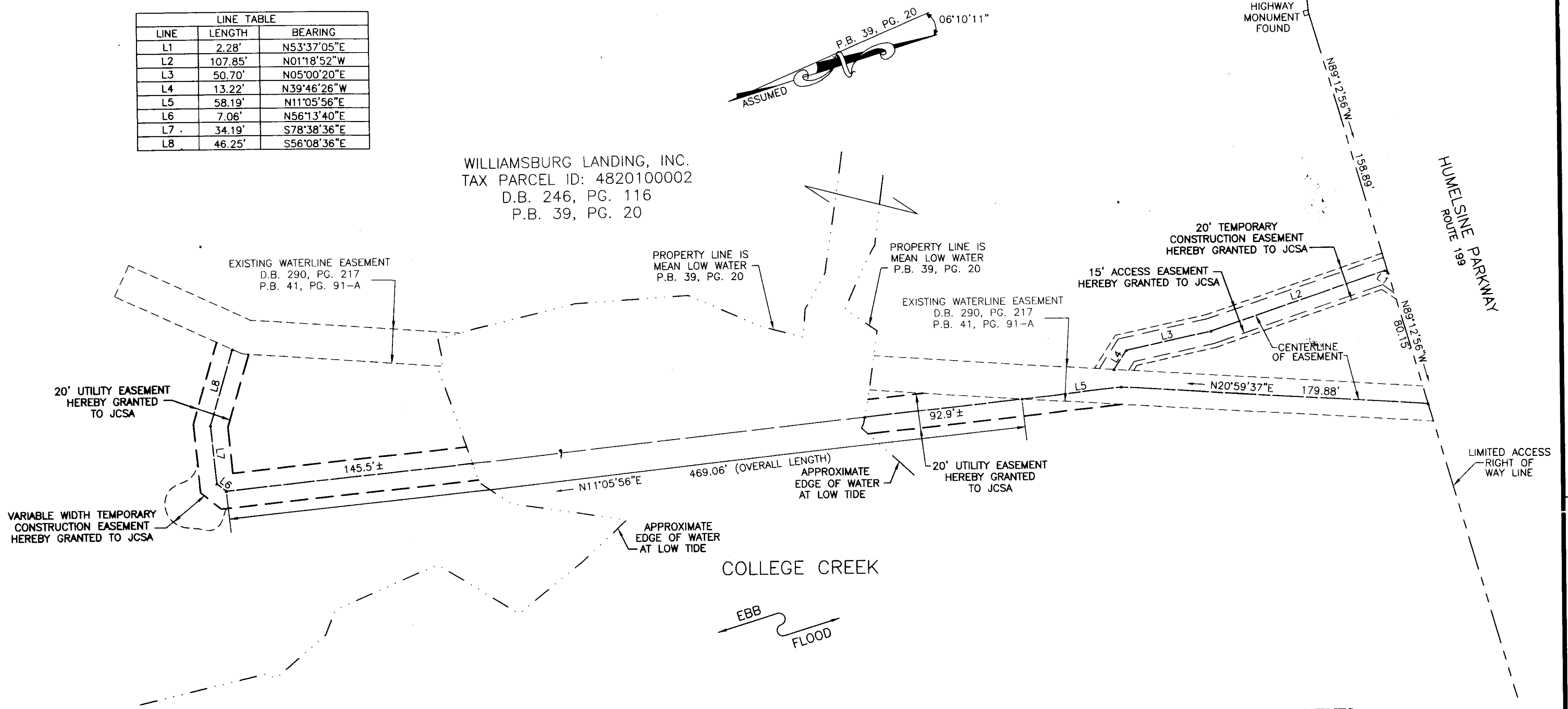


#090027396

| LINE TABLE |         |             |
|------------|---------|-------------|
| LINE       | LENGTH  | BEARING     |
| L1         | 2.28'   | N53°37'05"E |
| L2         | 107.85' | N01°18'52"W |
| L3         | 50.70'  | N05°00'20"E |
| L4         | 13.22'  | N39°46'26"W |
| L5         | 58.19'  | N11°05'56"E |
| L6         | 7.06'   | N56°13'40"E |
| L7         | 34.19'  | S78°38'36"E |
| L8         | 46.25'  | S56°08'36"E |

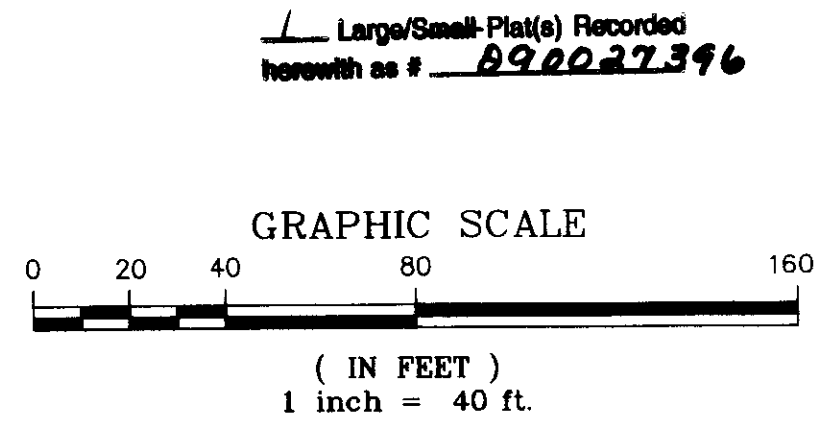
WILLIAMSBURG LANDING, INC.  
 TAX PARCEL ID: 4820100002  
 D.B. 246, PG. 116  
 P.B. 39, PG. 20



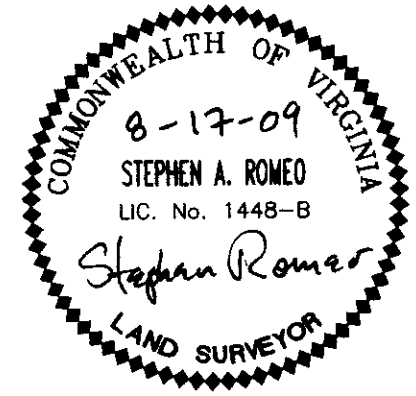
PLAT SHOWING EASEMENTS  
 TO BE CONEYED BY  
**WILLIAMSBURG LANDING, INC.**  
 TO  
**JAMES CITY SERVICE AUTHORITY**

JAMES CITY COUNTY, VIRGINIA

DATE: 08-17-09 SCALE: 1"=40'



City of Williamsburg & County of James City  
 Circuit Court: This PLAT was recorded on  
5 October 2009  
 at 10:39 AM/PM, PG. —  
 DOCUMENT # 090027396  
 BETSY B. WOOLRIDGE, CLERK  
Betsy B. Woolridge Clerk



**LANDMARK**  
**DESIGN GROUP**  
 Engineers • Planners • Surveyors  
 Landscape Architects • Environmental Consultants

4029 Ironbound Road  
 Suite 100  
 Williamsburg, VA 23188  
 Tel. (757) 253-2975  
 Fax (757) 229-0049  
 Email: lmdg@landmarkdg.com