

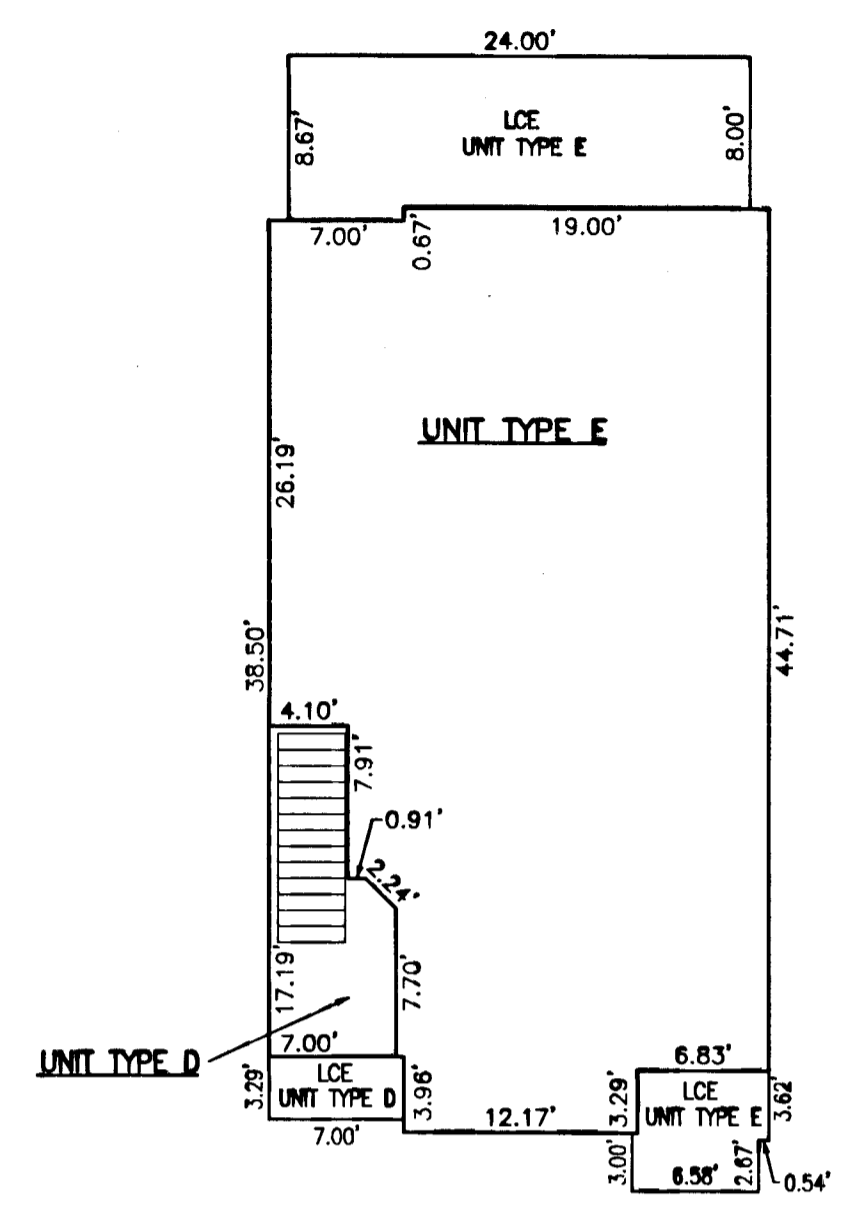
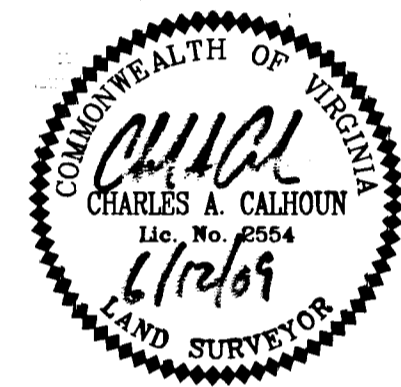
090022560

PLAN OF
GOVERNOR'S GROVE AT FIVE FORKS
 A CONDOMINIUM
 LOCATED IN THE BERKELEY DISTRICT
 AMES CITY COUNTY, VIRGINIA
 DATE: 6/12/09 SCALE: 1" = 10' JOB# 06-460
 SHEET 3 OF 3

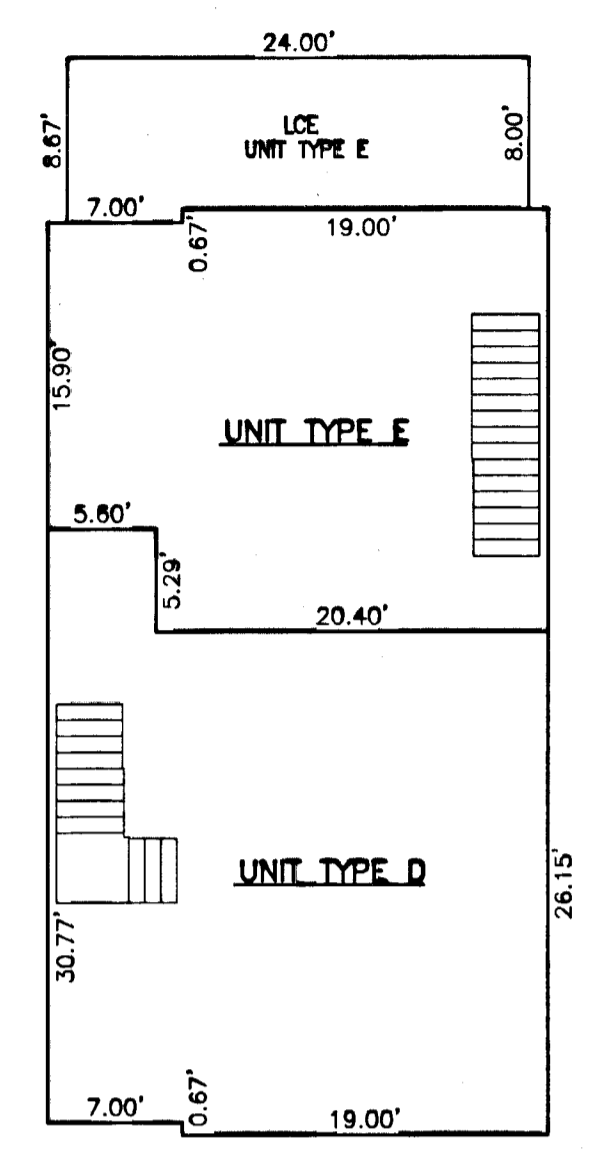
LandTech
 Resources, Inc.
 Surveying • Engineering • GPS
 205-E Bulfinch Blvd., Williamsburg, VA 23188
 Phone: (757) 565-1677 Fax: (757) 565-0782
 web: landtechresources.com

SURVEYORS CERTIFICATE
 I HEREBY CERTIFY THAT THIS PLAN IS ACCURATE AND COMPLIES
 WITH THE PROVISIONS OF SECTION 55-79.58 (B) OF THE CODE
 OF VIRGINIA 1950 AS AMENDED.

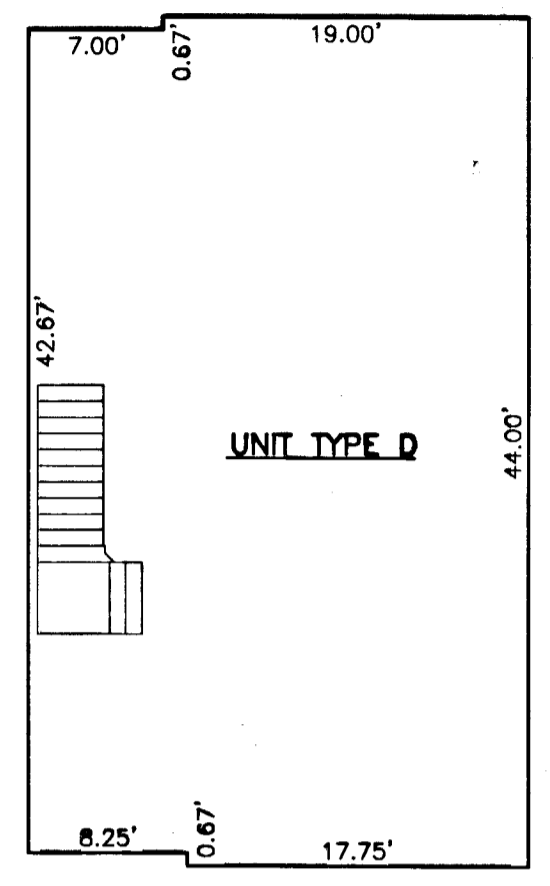
SIGNED: *Charles A. Calhoun*
 CHARLES A. CALHOUN, L.S. #2554



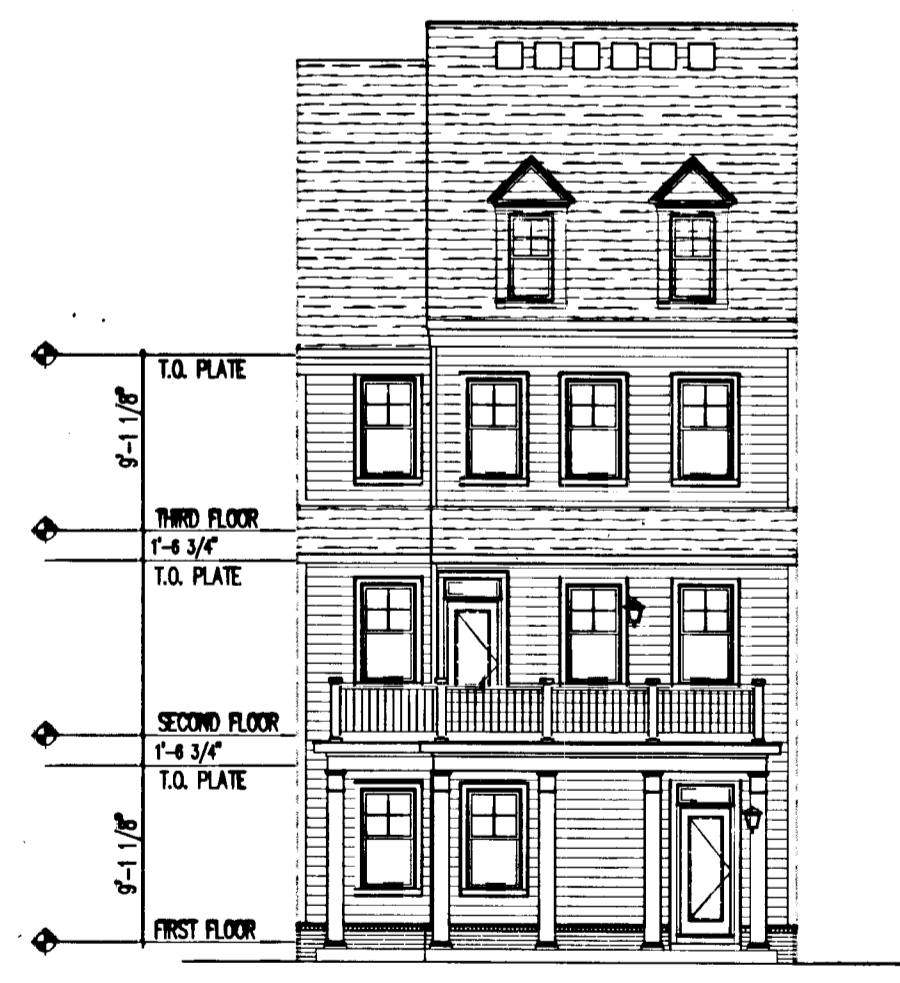
UNIT TYPES D & E
 FIRST FLOOR PLAN



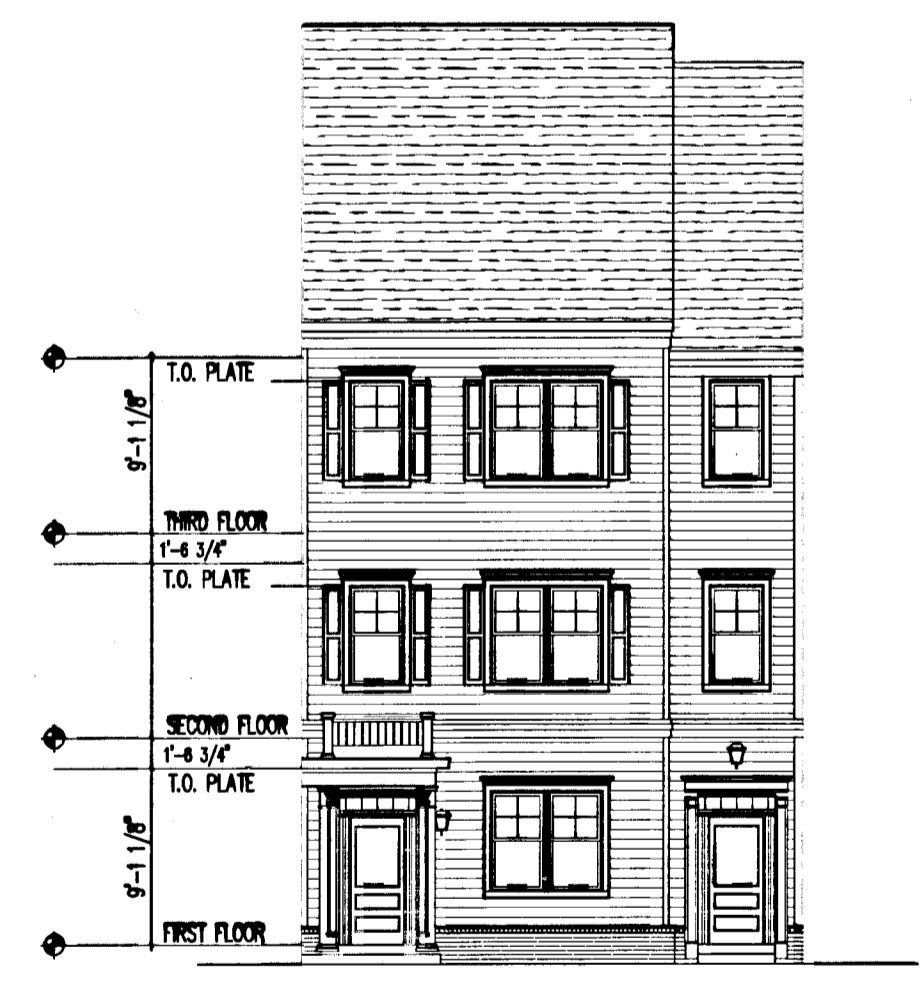
UNIT TYPES D & E
 SECOND FLOOR PLAN



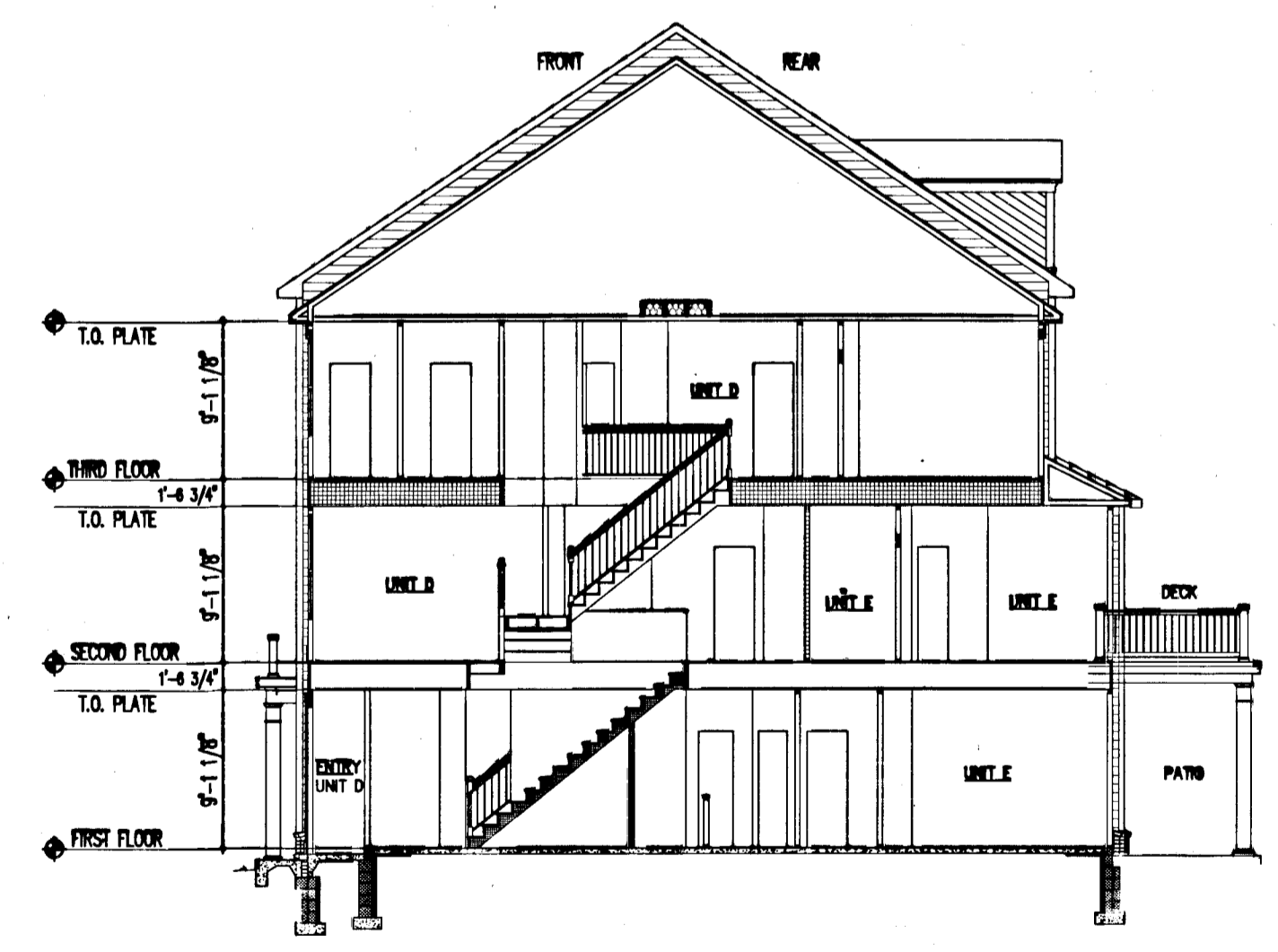
UNIT TYPE D
 THIRD FLOOR PLAN



UNITS D & E
 REAR ELEVATION



UNITS D & E
 FRONT ELEVATION



UNITS D & E
 BUILDING SECTION 1

City of Williamsburg & County of James City
 Circuit Court: This PLAT was recorded on
 6 August 2009
 at 3:59 AM/PM. PG. —
 DOCUMENT # 090022560
 BETSY B. WOOLRIDGE, CLERK
Betsy B. Woolridge Clerk

5 Large/Small Plat(s) Recorded
 hereon as # 090022560

*LCE=LIMITED COMMON ELEMENT